

MARCH 2025

# Tatsfield Parish Magazine

*30* years  
1995-2025

[www.tatsfield.org.uk](http://www.tatsfield.org.uk)  
£2 One copy FREE to each household

# Titsey Place & Gardens

Oxted, Surrey



## Come and spend an exciting day exploring our historic manor house and beautiful gardens

Titsey Place, with its stunning garden, lakes, woodland walks, walled kitchen garden and park offering panoramic views, enchants visitors. Enjoy the fine family portraits, furniture, a beautiful collection of porcelain and a marvellous set of four Canaletto pictures of Venice. After touring the house and strolling through the gardens, visitors can enjoy delicious refreshments in our tea rooms.

Open Season: 14 May to 24 Sept 2025

Opening Days: Wed & Sat - All facilities

Sun - Garden & tea room only

Bank Holidays: Open 26 May & 25 Aug 2025

NGS Days: Open 25 May, 29 June, 27 July,  
31 Aug 2025

Opening Times: 1pm to 5pm

House Tours: 1.30, 2.30, 3.30pm

Woodland Walks: Open all year round

**Info Line: 07889 052461 [www.titsey.org](http://www.titsey.org)**



**LOOK  
OUT AT  
THE BAKERY**



**We are Open for Lunch and Dinner  
Tuesday to Saturday and for traditional  
Sunday Lunch.**

*We have 7 quality En-Suite Letting Bedrooms  
with discounted rates for Tatsfield Residents.*

*Call in for further details or call us on*

**01959 577605**

THE BAKERY RESTAURANT - WESTMORE GREEN - TATSFIELD - KENT - TN16 2AG  
Tel 01959 577605 e-mail [info@thebakeryrestaurant.com](mailto:info@thebakeryrestaurant.com) or [www.thebakeryrestaurant.com](http://www.thebakeryrestaurant.com)

## *Sheree's Store & Tearoom*



- Specialty Tea and Coffees
- Delicious cakes
- Cream teas
- Hand made cards
- Locally made arts & crafts
- Wide range of products including locally sourced & Fairtrade
- Newspapers & stationery
- PayPoint

Join us in a friendly, relaxed atmosphere in the heart of the village

Tel 01959 928181

2 The Parade  
Westmore Green  
Tatsfield TN16 2AS

 'Sheree's Store and Tearoom'



# Tatsfield Village Club

phone: 01950 577330

email:

tvsecretary@btconnect.com

Facebook: Tatsfield Village Club

Instagram:

tatsfield\_village\_club



*Members & their guests  
welcome*

## UPCOMING EVENTS

Seniors Afternoon Tea

Monday 27th January

Adult Games Night

Friday 8th February

Disco/DJ (after meat raffle)

Friday 28th February

The Licks

Saturday 15th March

Disco/DJ (after meat raffle)

Friday 28th March

...coming soon Tina Turner act, Country evening and more!



## TUITION

- 7-11 years
- Key Stage 2 Numeracy & Literacy
- Entrance Exam Practice
- 11+ Practice
- Support in English & Reading up to Year 9

**1:1 coaching to improve confidence and competence. Proven results. Lady tutor with 30 years experience. References available.**

Tatsfield, Oxted, Limpsfield & Westerham area

**07773 517063**

## Deige's Helping Hands Home Care Provider

Personal Domiciliary Care

Affordable and flexible care delivered to your own home. We have provided care for the elderly for over 10 years.

We offer a consistent, professional and reliable service.

Flexibility - we will work with you to tailor a care plan that meets your requirements.

Please contact Deige  
07981182773



# Homeopathy

A safe and effective form of natural healing for adults and children, which can help with most complaints.

TEL  
01959 577 143

MOBILE  
07494 568 520



**Alizon Mooney** R.G.N.  
QUALIFIED HOMEOPATH

# A25 Taxis

Your reliable Tatsfield taxi Service for all occasions

Airport transfers  
Taxi hire  
Occasion/Wedding hire  
Corporate hire  
School run service (DBS checked)

01959 575957

✉ A25taxis@live.co.uk

# The Chartwell Charities

## MAKE A BIG DIFFERENCE WITH A MONTHLY GIFT



SCAN HERE  
to find out more

Pledging a donation on a regular basis allows us to plan ahead and budget for the long-term, because we know, day in day out, that we have a steady income stream that we can rely on. Be a part of our exclusive community by supporting our work, both now and in the future.



Every gift we receive is committed to improving facilities, funding clinical research and capital projects, enhancing staffing levels, as well as delivering a range of support to young oncology patients and their families in our local communities.

**CONTACT:** <https://chartwellcancertrust.co.uk/regular-giving/>

info@chartwellcancertrust.co.uk  
www.chartwellcancertrust.co.uk

# 01959 570322

Charity Registration Number: 1109784



# ACACIA TREE SURGEONS

EST.1944

We provide a wide range of tree services  
Complete tree and Stump removal  
Thinning and Pruning  
Crown Reduction  
Lifting and Reducing  
Site Clearance  
24 Hour Emergency Call Out  
Chippings delivered  
All fencing undertaken.

Based in Tatsfield  
01959 577718  
07831 132333  
acaciatreesurgeons@gmail.com

**NPTC QUALIFIED &  
CHAS REGISTERED**

Call us today for a free estimate  
Celebrating 75 years of professional tree care



## Spanish Tuition

All age groups and levels.

Help with Key Stage 3,  
GCSE, A-level  
or just for fun.

Contact Clare Southworth

01959 541087 or

07786 362338

[southworth21@hotmail.com](mailto:southworth21@hotmail.com)

East  
Surrey  
Physio



- Community physiotherapy for older people -

### Jennifer Willis

BSc (Hons) Physiotherapy MCSP, HCPC

*Fallen recently? Suffer with pain?  
Balance and mobility not as good as they used to be? Lost  
confidence when moving around?  
Suffer from a Stroke, Dementia, PD, MS, frailty?  
Feel weaker or fatigued after an episode of COVID-19  
..then East Surrey Physio can help*

Jennifer will visit you in your own home, residential home,  
or nursing home for your physiotherapy sessions.



07939 461 416

[jenniferwillisphysio@yahoo.com](mailto:jenniferwillisphysio@yahoo.com)

[www.eastsurreyphysio.com](http://www.eastsurreyphysio.com)

hcpc

Warlingham - Oxted - Tatsfield - Caterham - Woldingham



# WESTERHAM HEIGHTS GARDEN CENTRE



YOUR LOCAL FAMILY RUN BUSINESS FOR OVER 40 YEARS. AT WESTERHAM HEIGHTS, WE STRIVE TO CREATE A LOYAL AND DEPENDABLE BUSINESS, WITH A UNIQUE FAMILY FEEL. WE HAVE ALL OF THE KNOWLEDGE AND EQUIPMENT YOU MAY REQUIRE TO CREATE A RELAXING OUTDOOR SPACE FOR YOU AND YOUR FAMILY!

VISIT YOUR LOCAL FAMILY RUN GARDEN CENTRE

- SEASONAL PLANTS & TREES
- GARDEN ESSENTIALS & TOOLS
- ORNAMENTAL GARDEN PIECES
- GARDEN DECOR
- COAL, LOGS & GAS
- COMPOST & AGGREGATES
- HOMEWARE & GIFTS
- SEASONAL HOME DECOR
- FRENCHIC PAINT

*Leave us a Google  
Review and let us  
know your feedback!*



WESTERHAM HEIGHTS GARDEN CENTRE  
MAIN ROAD  
BIGGIN HILL  
WESTERHAM HILL  
WESTERHAM  
TN16 2HW  
TEL - 01959 571545  
WWW.WESTERHAMHEIGHTS.CO.UK



WESTERHAM HEIGHTS@YAHOO.COM



WESTERHAM HEIGHTS GARDEN CENTRE



@WESTERHAMHEIGHTSGARDENCENTRE

## TATSFIELD



01959 577347

### Garage Ltd



## MOT - Servicing - Repairs on all makes of vehicle.

- Tyres • Batteries • Brakes • Suspension
- Air Con • Clutches • Diagnostics • Welding

Please call Simon or just pop in.

*Established since 2014*

5-7 Paynesfield Road • Tatsfield • TN16 2AT • tatsfieldgarage@gmail.com



Pre School for children 2+

Tatsfield Village Hall

Funding available for 3 & 4 year olds  
and some 2 year olds

Monday to Thursday

New opening times  
8:30am ~ 3:20pm

Friday

8:30am ~ 1:00pm

Morning, afternoon and whole day sessions  
available

~Clubs included in some sessions ~  
Science Club, Boom Arts Academy, Gardening Club & Messy Club

Phone : 01959 540775

Email: [office@littlearcornstatsfield.co.uk](mailto:office@littlearcornstatsfield.co.uk)  
[www.littlearcornstatsfield.co.uk](http://www.littlearcornstatsfield.co.uk)

Charity number: 1024480



**TITSEY**  
- BREWING CO. -

## THE TITSEY TAPROOM

incredible views & delicious beer

**OPEN THURSDAY – SUNDAY**

for brunch, burgers, rotisserie  
chicken & tasty sides

### WHAT'S ON THIS MONTH?

Quiz Night - 6th March  
Six Nations - 8th, 9th, 15th March  
Live Music and more..

[www.titseybrewingco.com](http://www.titseybrewingco.com) | [@titseybrewingco](https://twitter.com/titseybrewingco)

Clarks Lane Farm, Tatsfield, TN16 2JU







# IQ Wealth Management



INVESTMENTS



PROTECTION



PENSIONS

As a financial advice firm, we provide advice on a wide range of financial matters. From investment advice to retirement planning and managing your estate, we ensure as much as possible goes to the people you want to benefit from your hard work. Our initial 45 minute meeting is free, either at our offices in Tatsfield or your home.

## 01959 571300

IQ Wealth Management, Aileen McHugo Building, Westmore Green, Tatsfield TN16 2AG

Approver Quilter Financial Limited 15/02/2024



Tatsfield Village Hall

Tuesday or Thursday 6.15pm - 7.15pm

Barre with Fi

St Christopher's Church Hall, Chelsham

Monday 6.00pm - 6.35pm

Step with Fi

Wednesday 9.30am - 10.15am

Flex with Fi

Friday 9.15am - 10.15am

Barre with Fi

Spaces  
are  
limited

For more information  
check out our website  
[www.wellnesswithfi.co.uk](http://www.wellnesswithfi.co.uk)  
or  
call me 07801 556 069



wellnesswithfi



wellness\_with\_fi




# The right choice for your child

We believe that every child is made to live an extra ordinary childhood, that they can accomplish anything, with the right teacher and environment. With over 100 years teaching experience, Monkey Puzzle Tatsfield is more than just an education, it is an environment where life skills, good manners, caring for each other and bonds are made for life.

Monkey Puzzle Day Nursery Tatsfield  
 Old School, Church Hill, Tatsfield, Surrey TN16 1JX  
**Call 01959 928 427**  
[www.monkeypuzzletatsfield.co.uk](http://www.monkeypuzzletatsfield.co.uk)

  @monkeypuzzletatsfield



## CLASSES AT TATSFIELD

EVERY FRIDAY

Boom Arts Academy is an award-winning performing arts school for all levels and ages. Our essence is our energy – we're a positive, empowering place to learn to dance.

*Tots street dance: 4.15-4.45pm*  
*Lower Junior street dance 4.45-5.30pm*  
*Boom theatre & Singing 5.30-6.15pm*  
*Junior Street dance 6.15-7.00pm*

SCAN THE QR CODE TO BOOK



Boom is known for Street Dance, Singing & Theatre, LAMDA, Contemporary Freestyle, Acro & Tumble, Break Dance, Hip Hop, and Creative Ballet.

We're the only school in South London offering Street Dance and Disco exams with the Imperial Society of Teachers of Dancing (ISTD) – with a 100% pass rate AND 100% Honours.





SATURDAY AND OTHER WEEKDAY CLASSES AVAILABLE AT SANDERSTEAD, SHIRLEY AND KENLEY

  [info@boomartsacademy.com](mailto:info@boomartsacademy.com)  
[WWW.BOOMARTSACADEMY.COM](http://WWW.BOOMARTSACADEMY.COM)



# Hazelwood School



# *Dare to* **IMAGINE**

**Nursery | Pre-Prep | Prep**

**Open Morning:**  
**Saturday 15<sup>th</sup> March – 9.30am**



Discover our award-winning, innovative teaching methods and flexible learning spaces. We dare to think big and empower every child to fulfil their potential.

Private Tours available to book today.

[admissions@hazelwoodschool.com](mailto:admissions@hazelwoodschool.com)

Oxted, Surrey | [hazelwoodschool.co.uk](http://hazelwoodschool.co.uk)





# LILLEY'S BATHROOMS



## Start Your Dream Bathroom Today

At Lilley's bathrooms we pride ourselves in providing our customers with a professional service and high levels of expertise with many years design experience. We use quality products from leading, reputable manufacturers. Showcasing a variety of styles, our showrooms provide an abundance of bathroom inspirations, with realistic working bathroom displays.

A free Design Service | Free Measure Up | Free Local Delivery

The use of 4D software Virtual Worlds, where you can "step in" to your space that has been created before the work begins

### **The Studio**

66-70 Footscray Road, Eltham, London SE9 2SU

**0208 8507179**

### **The Gallery**

157 Main Road, Biggin Hill, Kent TN16 3JR

**01959 572000**



[lilleysbathrooms.co.uk](http://lilleysbathrooms.co.uk)

# Tatsfield Aquatics & Reptiles

Tatsfield Aquatics Ltd

Approach Road

Tatsfield

TN16 2JT

01959 571828

Info@tatsfieldaquaticsandreptiles.co.uk

www.tatsfieldaquatics.com

Retail - Landscaping - Maintenance



## RST Glass and Glazing Ltd

14 Rosehill Road, Biggin Hill, Kent TN16 3NF

**01959 571200**

✉ **info@rstglassandglazing.co.uk**

Windows, door & conservatories

Double glazed units

Misted and broken units

Handles, hinges and locks replaced

Glass table tops cut and polished

Patio door wheels/runners

Trade counter

Burglary damage repairs

All insurance work

Contract Glazing



**FENSA**

APPROVED  
WINDOW & DOOR INSTALLER

6 Westmore Road  
Tatsfield  
TN16 2AX



Gift Certificates  
available  
for all therapies

**Alex Davies**  
Muscle Therapist  
07967 864235  
alxdavies@hotmail.com



**Lorraine Maddison**  
McTimoney Chiropractor  
07817 548133  
rainymad@icloud.com

Other therapies available including reflexology

[www.sourcehealthclinic.co.uk](http://www.sourcehealthclinic.co.uk)



Call Now on 01959 447525

YOUR LOCAL  
**VIDEO**  
**PRODUCTION**  
COMPANY

VIDEO

PHOTO

DRONE



**SPECIALISTS IN BUSINESS OVERVIEW VIDEOS, PRODUCT RELEASE,  
SERVICES EXPLANATION & VIDEO TESTIMONIALS**

Discover how we can help your ideal, local clients, find you online when they need your service

**CONTACT ANDY ON: 01959 447525 | [andy@videoevolution.co.uk](mailto:andy@videoevolution.co.uk)**



**Tatsfield Martial Arts**

## **JUDO, JU JITSU & COMBAT FITNESS**

**Head Coach: Adam Plinston**

**Judo 6<sup>th</sup> Dan / Ju Jitsu 4<sup>th</sup> Dan. UKCC Level 2 Coach**

Club coaches are first aid trained, DBS checked and insured via NGBs  
Children and adult classes, from age 4+ on Wednesdays, Thursdays,  
Fridays & Saturdays

**Gain confidence. Learn self-defence. Have fun getting fit!**

[www.tatsfieldmartialarts.com](http://www.tatsfieldmartialarts.com)

**07956 956095**

[tatsfieldmartialarts@gmail.com](mailto:tatsfieldmartialarts@gmail.com)



## Mayfield Riding School



- BHS approved & licensed by Surrey Council
- Adults & children welcome (from age 4)
- Individual and group lessons
- Fully qualified instructors
- BHS training and exams
- Jumping and hacking
- Birthday parties
- Liveries

**(01959) 571059**

[www.mayfieldhorses.co.uk](http://www.mayfieldhorses.co.uk)

*Produced for the Village by the Parish Magazine Committee under the authority of Tatsfield Church.*

**Editors** • Tara Barry and Tracey Syrett

**Chair** • Debra Elsdon

**Treasurer** • Madie Langford (577114) **Distribution Managers** • Jim and Ruth Yeeles (577489)

**Advertising Manager** • Sarah Tait **Production** • Ruth Yeeles

#### CHURCH CONTACTS

**St Mary's Church Office** (Thurs 9.30-13.30)

**Admin:** Steve Tatler, The Parish Office, High Street, Limpsfield RH8 0DG.

Phone 01883 712512 / email [stmoffice.lttm@btinternet.com](mailto:stmoffice.lttm@btinternet.com).

**Team Rector:** Revd Helen Cook email: [hjwcook@yahoo.co.uk](mailto:hjwcook@yahoo.co.uk)

**Curate:** Debra Elsdon email: [curate.lttm@gmail.com](mailto:curate.lttm@gmail.com)

**Wardens:** Marjory Broughton (01959 541059) / Chris Hancock (01959 577622)

**St. Mary's Church Hall Bookings** • Sheila Cook (577443)

#### COUNCIL CONTACTS

**Parish Council: Clerk** • Aileen McHugo Building, Westmore Green, Tatsfield TN16 2AG  
clerk@tatsfieldpc.org.uk (07483 337461)

**Chair** • Kim Jennings email: [kimjennings@tatsfieldpc.org.uk](mailto:kimjennings@tatsfieldpc.org.uk), (577328)

**Website** • [www.tatsfieldpc.org.uk](http://www.tatsfieldpc.org.uk)

**Tandridge District Councillor** • Martin Allen, 38 Paynesfield Rd, Tatsfield TN16 2BG (577201)

**Surrey County Councillor** • Becky Rush [becky.rush@surreycc.gov.uk](mailto:becky.rush@surreycc.gov.uk)

#### OTHER CONTACTS

**Village Hall Bookings Secretary** • Helena Garcia-Mcleod ([bookings@tatsfieldvillagehall.org.uk](mailto:bookings@tatsfieldvillagehall.org.uk))

**W.I. Hall Bookings** • Pat Walsh (01959577684)

**Parish Room Bookings** • (07483 337461) email [clerk@tatsfieldparishcouncil.org.uk](mailto:clerk@tatsfieldparishcouncil.org.uk)

**Tatsfield Primary School Head** • Rachel Jewitt (577356)

**Tatsfield Village Club** • (577330)

**Furze Corner Sports Pavilion Bookings** • (07533 033325)

**Doctors** • Stock Hill Surgery (580011) • Westerham Surgery (564949) • Oxted Medical Centre (01883 734000)

**Village Website:** [www.tatsfield.org.uk](http://www.tatsfield.org.uk)

#### MAGAZINE CONTRIBUTIONS

We welcome contributions from village organisations and individual residents but reserve all editorial rights. We welcome letters commenting on items in previous issues or on anything else. Anonymous submissions will not be accepted. Organisations must include contact details in their submission, which will be published. Copy date for the Magazine is normally 16<sup>th</sup> of the preceding month, except for July/Aug and Jan/Feb double issues. Ideally contributions should be sent as a Word attachment in an email to: [tatsfieldpm@gmail.com](mailto:tatsfieldpm@gmail.com), Alternatively they may be posted to: Tatsfield Parish Magazine, 20 Shipfield Close, Tatsfield TN16 2AU.

**Enquiries concerning advertising or loose inserts** should be made to Sarah Tait ([tatsfieldmag@gmail.com](mailto:tatsfieldmag@gmail.com)). All loose inserts need to be booked and approved at least ONE MONTH in advance of insertion.

**Small Ads** These are accepted only from Tatsfield or Titsey residents (No Trade) and are free of charge (Max 10 words plus phone number.) We will include them in the next issue space permitting.

**Calendar Dates** Our calendar usually covers six weeks or more from publication so please give us your dates in good time. If you don't want your event to clash with others why not check with us early?

**Advertisements** We take no responsibility for the goods and services advertised in the magazine.

**Cover image:** A Tatsfield Sunrise, with thanks to Sheree and Simon Cook.



## EDITORIAL

### Walking towards Lent and Easter: A time for reflection

Very soon it will be out with the frying pans for Shrove Tuesday; this year on 4<sup>th</sup> March. Apart from the fun – and peril – of flipping pancakes, this is also the beginning of the season of Lent for the church across the world. Many Christians will spend the next 40 days preparing their hearts for the drama of Easter and the joy and hope of Easter Day.

But this can be a time when we all – whatever our tradition or belief system – may reflect and pause; be open to change – in ourselves and our community.

We are told that most of us pray – those times when helplessness just seems to make prayer the only thing we can do. We are sometimes scared, frustrated, angry; or full of delight, wonder and gratitude. Taking these thoughts and feelings and expressing them on paper, in song, kneeling in our 1,000 year-old church, driving through our beautiful North Downs countryside can be a healthy and helpful practice.

After eating stacks of pancakes and before the Easter eggs arrive – we might want to consider fasting. A way of thinking about our relative plenty in the shadow of the world's need; where and how what we consume is produced. It might mean taking a break from our screens, cutting back, simplifying our lives.

And finally, Christians are encouraged to give alms, the old fashioned word for giving our resources. This can be financially; we know that so much support is needed locally, nationally and internationally. But also, and maybe even more so in our busy lives, our time. A visit to a neighbour, joining a local group, teaching skills to others.

For Christians, as well as the curious and the unconvinced, there will be a range of services and events at our local churches. Keep your eyes open for details. These offer opportunities to enquire, reflect and challenge. The road to the Cross is bumpy and we can help each other along the way.

As a newcomer to village life I am looking forward to the change in the countryside and a hike in the temperature! But most of all, I hope to travel this Lenten way with friends and neighbours and rejoice together on Easter Day.



**Blessings to you all, Reverend Debra Elsdon**

## ENID GARRARD

*“Speak of me as you have always done. Remember the good times, laughter, and fun. Share the happy memories we've made. Do not let them wither or fade”.* Anthony Dowson

By the time you read this we will have had the opportunity to say goodbye to Enid Garrard who sadly passed away on December 1<sup>st</sup>, and was laid to rest in St. Mary's Churchyard on 23<sup>rd</sup> January.

Enid was born in 1941, she lived in Tatsfield all of her life and was an integral part of the village scene for over 80 years. As a child Enid Wedgewood attended the old village school, along with all the other local children. Senior Tatsfielders from that era recall her as a rather cheeky child, and she herself had many stories of teenage mischief and escapades, sometimes leading to conversations with the village policeman, that she somehow kept from her parents. She had three sisters and a brother, her mother was the librarian in the Village Hall Library, her father was a coal merchant and her Nan ran a sweet shop from their cottage.

Enid lived much of her life in the family home in Redhouse Road and then took over her Nan and Grandad's cottage on Westmore Green, now demolished, called The End. She recalled that many concerned people thought the undulating roof of the house would collapse at any moment only to be reassured that, despite the efforts of a German incendiary bomb and a Canadian soldier managing to remove it with his bare hands (and getting badly burned), the rafters remained firm and sound.

In January 2009 the Tatsfield History Project recorded a conversation between four Tatsfield matriarchs, including Enid. Many great memories were recalled during that evening and Enid regaled them with stories of how as a youngster she would often be found either riding on the back of her father's lorry, or the back of a lad's motorbike; how she once fell into the village pond, how she sledged down the slopes in the village fields on just a tin tray or a piece of corrugated iron; how she spent memorable days down at the coast on village “Charabanc” outings, or at the Colegates garden parties in fancy dress or enjoying a horseback ride.

Enid was both physically and socially at the very heart of the village, joining in so many activities and clubs, such as darts, indoor bowls, ballroom dancing and line dancing, crafts, Women's Institute and the Not So Young Club. For many years she organised a Christmas Craft Fair in the village hall. Some older residents may recall that she also took orders for her homemade christmas puddings steamed in her faithful kitchen boiler.

I knew Enid mainly through the W.I. where she was an active committee member for many years. She was always incredibly forthright. Martin Allen remembers trying to make his welcome speech at one particular Horticulture Society lunch, which had been prepared and was being served by the W.I., only to be sharply hurried up by Enid when the lunch was in danger of getting cold.

Yes, Enid was unashamedly outspoken but she was also kind and generous and always willing to make fun of herself. Many may remember the pantomimes and musical shows that Enid organised and in which she performed a leading role during the 1990s. Enid had unearthed the old VHS tapes of these shows not long before she died and I had them converted to DVDs, which we had planned to show in the village sometime in 2025 as part of the W.I.s 100th birthday celebration. This is something we still intend to do and of course with Enid in front and centre stage.

Many of you will have your own memories of Enid, she was certainly a character and she will not be easily forgotten.

**Sue Smale**

## **DESMOND BISHOP**

Desmond's family would like you to know that a celebration of his life will take place at the Bluebell Crematorium on Monday 17th March at 12.30pm.

If unable to attend the hearse will travel through the village from 11.45am.

**Margaret Bishop**



***A Tatsfield Winter Sunrise***

Thank you to Jon Allbutt for this beautiful photo taken from the lay by on Approach Road near the junction of Clarks Lane.

## TATSFIELD PARISH COUNCIL

The Parish Council met on Monday 10<sup>th</sup> February at the Aileen Mchugo building at 8pm.

As you will probably have noticed the village centre has been subjected to two incidents of vandalism/anti social behaviour in the last month. The pond signs were removed and thrown in pond, together with other various items including plant pots and books from the library. Following this, vandals drove onto Westmore Green causing damage to the green. Both incidents were reported to the police and we ask all villagers to report any future incidents.

**Planning** (Full reports on planning can be found on the councils website.)

**TA/2025/85/TPO** The Dome, Paynesfield Road. Reduction in height of eleven TPO trees by 30%. Recommendation: No comment.

**TA/2024/1396** Colegates, Edgar Road. Replace three first floor dormer windows in disrepair (Retrospective Listed Building Consent.) Recommendation: No comment.

**TA/2024/609** Kingswood, Goatsfield Road. Demolition of existing building and replacement for the ancillary use of host property. Recommendation: Objection.

**TA/2024/1287** Tatsfield Cottage, Ricketts Hill Road. Proposed outbuilding for recreational room/garage to be used ancillary to main dwelling on land (Certificate of Lawfulness for proposed use or Development). Recommendation: More information is required from applicant to properly assess the application.

**Tree Works** Tree works highlighted by our Tree Survey of trees on Parish Council owned land will be taking place during March. Unfortunately this will involve a short road closure on Ricketts Hill Road. Date and time will be advertised on Tatsfield Talk and Tatsfield Talk 2.

**EV Charging** A site survey will be undertaken for electric car charging points in Village Hall car park to start our process of bringing this to the village.

### Dates for your diary

9<sup>th</sup> March National Covid-19 reflection day. Tie a yellow ribbon at Westmore Green Picnic Area.

6<sup>th</sup> April Great British Spring Clean. Village litter pick, meet 10.30am Westmore Green Picnic Area.

8<sup>th</sup> May VE Day Celebrations. Beacon Lighting on Bakery Lawn. (More details to follow).

The Parish Council received a request for the use of Westmore Green to hold a Fun Walk on 7<sup>th</sup> September. This was agreed provided the correct insurance and Risk assessments are provided.

**Meeting dates 2025** Members agreed the following meeting dates for 2025: 13<sup>th</sup> January; 10<sup>th</sup> February; 10<sup>th</sup> March; 14<sup>th</sup> April; 19<sup>th</sup> May; 9<sup>th</sup> June; 14<sup>th</sup> July; 8<sup>th</sup> September; 13<sup>th</sup> October; 10<sup>th</sup> November; 8<sup>th</sup> December.

Full minutes of our meeting can be found on the Parish Council Website.

**Kim Jennings, Chairman** Email: [kimjennings@tatsfieldpc.org.uk](mailto:kimjennings@tatsfieldpc.org.uk)

## **TATSFIELD PARISH MAGAZINE ADVERTISING MANAGER**



Our parish magazine is funded by kind donations and paid advertising from local businesses. We are looking for someone with good organisational and computer skills to take on the volunteer role of Advertising Manager. There is plenty of scope to make the role your own.

A fantastic role for someone looking to increase their skill base and to contribute to the Tatsfield community. The Advertising Manager sources and invoices advertisers, manages the advert layout and may occasionally do some advert design.

**For more information, please contact Sarah Tait: 07468 589379 or [tatsfieldmag@gmail.com](mailto:tatsfieldmag@gmail.com)**

## **COVID-19 NATIONAL DAY OF REFLECTION 9<sup>TH</sup> MARCH 2025**

To remember the pandemic and its impact  
on communities across the UK.

Please tie a yellow ribbon on our tree at  
Westmore Green Picnic Area.

**TATSFIELD PARISH COUNCIL**



## TATSFIELD'S NEIGHBOURHOOD PLAN

You can still view the documents on the neighbourhood plan website: <https://e-voice.org.uk/tatsfieldneighbourhoodplan>

### **TATSFIELD PARISH COUNCIL ARE TRIALING A NEW RECYCLING SERVICE FOR THE VILLAGE**

**YOU CAN NOW RECYCLE YOUR:  
USED COFFEE PODS AND  
EMPTY MEDICINE FOILS**



**RECYCLING BINS CAN BE FOUND  
AT THE AILEEN MCHUGO BUILDING  
BEHIND THE VILLAGE HALL**

**NOTE: PLEASE ENSURE THEY ARE IN A TIED  
RECYCLEABLE BAG WITH NO MEDICINES**

## TANDRIDGE DISTRICT COUNCIL

**Council agrees district council tax increase of £7.33 for 2025/26** The February Full Council meeting agreed an increase of £ 7.33 a year for a Band D property in Tandridge District Council’s share of the council tax for 2025/26. The meeting also agreed the Council’s budget for next year.

The Council’s share of the overall council tax will increase to £252.32 an increase which equates to 14 pence per week. This increase is to help maintain a wide range of vital services like recycling and waste collections, developing town centres, parks and open spaces and supporting our most vulnerable residents.

This year’s total band D council tax will be £2,436.24 - an increase of £109.08 which is divided among the different organisations as follows:

Authority	2024/25	2025/26	Increase Figures Approx.
Tandridge District Council	£244.99	£252.32	2.99%
Surrey County Council	£1758.60	£1846.35	4.99% including adult social care
Surrey Police & Crime Commissioner	£323.57	£ 337.57	4.35%

This Band D figure does not include parish precepts, which will vary across the district and the Tatsfield Parish Council will announce their own increase in their column. The vote for the increases was not completely supported across the parties, with some objections but more against the use of the money rather than the Council Tax increase. Just myself and one Conservative Councillor voting against this increase which I believe is not necessary and will not only go towards covering staff pay increases and remains to be seen whether it will improve any services to you the residents. In fact the whole budget is made up again of many hopes and savings that may or may not be achieved. Last year’s budget promised the same “balance” but at least this time we are forecast to end up with a £165,000 under budget at the end of this financial year, as well as reserves and earmarked reserves totalling £7M.

**Local Government Reorganisation** The other big matter at the moment is the Local Government Reorganisation where a new system will mean the abolishment of two tier authorities for one overall “controlling body”. *Last week, the government confirmed Surrey is among the first areas to take part in local government reorganisation.*

Regular meetings between the Districts and Borough Councils with Surrey County Council are ongoing. Council leaders across Surrey have agreed to rule out making a proposal to the government for a single unitary council for the county. The agreement was reached during a meeting last Friday (8<sup>th</sup> February), attended by leaders from all eleven district and borough councils, along with the Leader of Surrey County Council. The

council leaders are meeting weekly to develop an interim proposal, in line with government criteria, to be submitted by 21<sup>st</sup> March. A full proposal is to follow by 9<sup>th</sup> May.

The Independent Group that I lead have declared a preference for a 3-tier authority East-West to avoid having to take on debts from the South of the county and would involve about 400,000 residents; whereas a 2-tier authority would involve around 6,000,000 residents. We believe this would not be good for accountability or democracy.

You will have all seen the “uproar” being caused by the cancellation of the Surrey County Councils elections this year that were expected to be held in May; this has been agreed as a consequence of this reorganisation in an effort to save the money that holding these elections across Surrey would have cost us all for an authority that will not exist in 2026/27 if the reorganisation programme is actually kept. This reorganisation timetable may well coincide with the time that I was intending to retire.

I will keep you up to date as the matter progresses but also look out for our County Councillor Becky Rush’s update on her Facebook and Tatsfield Talk pages.

The reorganisation will no doubt have an effect on the staff so I do not doubt there will be tough times ahead for the council and the residents, as it is clear the future of the council within this reorganisation along with the limited financial availability will mean big changes will be coming.

I continue to work with the council(s) on planning issues, enforcement issues, abuse of yellow lines, blocked drains and building control problems please do not fall foul of these. If in doubt ask, it is cheaper that way. If you think I can help you with anything to do with the Tandridge District Council or anything else please do not hesitate to contact me.

**Cllr Martin Allen Tel: 01959 577201 or 07484 185363**

**Email: [cldr.martin.allen@tandridge.gov.uk](mailto:cldr.martin.allen@tandridge.gov.uk) or [martin\\_allen@talk21.com](mailto:martin_allen@talk21.com)**

## **CLAIRE COUTINHO MP**

We are delighted to announce that Claire welcomed her son, Rafael Peter Hawksbee, into the world on 17th January. While she takes some well-deserved rest, Claire’s team is working as normal and we are ready to help you with anything you need. Please feel free to continue to contact us on [claire.coutinho.mp@parliament.uk](mailto:claire.coutinho.mp@parliament.uk) if there is anything we might be able to help with.

While Claire is on maternity leave we still want to provide residents with an update on what we are working on locally and what has been happening in Parliament.

The Chancellor’s speech on growth in February contained a commitment to a third runway at Heathrow, but stopped short of giving a firm commitment on potential expansion of Gatwick.

The airport is acutely important to the lives and livelihoods of those who rely on Gatwick for their jobs – either directly or indirectly. We have started reaching out to local



campaigners to ascertain what mitigating measures they would most like to see introduced if expansion is approved, and how we can work together to find solutions for residents who will be affected by flight path changes, increased capacity and construction disruption in the short to medium term.

We will be pushing for a number of measures including an increase in noise monitors across the constituency to gather accurate, reliable data on how flight paths are affecting residents, better noise mitigation for local residents who will be affected by any construction work and flights, improvements to sewage treatment works, better car parking on-site and better traffic monitoring.

In the House of Commons, the Opposition has forced a vote in both Houses on cancelling May's local elections – something that the Chief Executive of the Electoral Commission has raised concerns about. We are clear that local government restructuring should not be imposed by top-down Whitehall diktat – the Government have been rushing this decision, and there has been a severe lack of effort to gather consensus within two-tier areas across the country.

We believe that more time should be taken to understand how these changes will affect the structure of local government, and to give residents an opportunity to share their views. In East Surrey, representatives of the district and borough councils and Surrey County Council are meeting regularly to discuss the proposal that will be submitted to the Secretary of State by 21st March, and particularly what should happen with the significant debts accrued by Woking Borough Council. We will keep residents updated as developments take place.

It is disappointing that Lloyds Bank has confirmed the closure of their branch in Caterham. Cash Access, who have confirmed they will be opening a Banking Hub in Caterham to maintain services for residents, and in a meeting they confirmed that Lloyds will not be able to close until the Banking Hub is open. An out-of-hours cash point has also been recommended. For more information on the services they will be providing, visit: [www.clairecoutho.com/news](http://www.clairecoutho.com/news) or email [claire.coutho.mp@parliament.uk](mailto:claire.coutho.mp@parliament.uk).

Finally, as Network Rail and GTR were considering changes to the next rail timetable, we created an East Surrey Rail Survey to offer residents a platform to share their ideas. Over 500 people got in touch to share their views, which, at the time of writing, we are currently processing. We will be meeting with Network Rail and GTR in the next few weeks to go through residents' feedback, with the aim of reviewing and adjusting the timetable to better suit the needs of local residents.

**Team Claire**



## POLICING



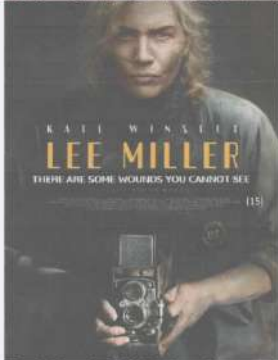
In case you missed reading the January 2025 report by The Surrey Police and Crime Commissioner you may be interested in the statistics below. In the past 12 months, Surrey Police Force has:

- More than doubled its charge rate, with an additional 3,500 offences prosecuted
- Made an additional 2,500 arrests
- Increased charges for both burglary and assault with injury by 90 per cent
- Achieved a four-fold increase in charges for shoplifting offences
- Doubled its charges for offences involving violence against women and girls

We will be continuing our efforts to improve on these statistics in the year ahead.

**Inspector Lyndsey Whatley**  
**Tandridge Safer Neighbourhood Inspector**

### TATSFIELD VILLAGE HALL SATURDAY MARCH 15th



**Doors 7.00~7.30 start~ends 9.40**

**ALL SEATS £8.00**

[www.curzoncountrycinema.com](http://www.curzoncountrycinema.com)

PAY AT THE DOOR or RESERVE & PAY ON LINE



### TATSFIELD VILLAGE HALL SATURDAY APRIL 26th



**Doors 7.00~7.30 start~ends 9.35**

**ALL SEATS £8.00**

[www.curzoncountrycinema.com](http://www.curzoncountrycinema.com)

PAY AT THE DOOR or RESERVE & PAY ON LINE





## **TANDRIDGE TOGETHER COMMUNITY FUND £20,000 IN GRANTS AWARDED**



The Tandridge Together Community Fund has awarded £20,000 in grants to support projects improving residents' health and wellbeing.

Local organisations who were awarded a grant:

- Bloomin' Arts Limited
- Cafe Milk CIO
- Delight
- East Surrey Domestic Abuse Services (ESDAS)
- ES RTP / Buses 4U
- Freedom Leisure
- Head2Head Theatre
- Lloyd Hall
- Make a Scene Theatre
- Prospero Theatre
- Sal's Shoes
- The Ryan Neuro Therapy Centre
- The Salvation Army - Caterham
- The Westway Community and Wellbeing Centre
- The Woodhouse Centre
- Warren Clark Golfing Dreams Limited
- Young Epilepsy

The grants of up to £2,000 will help a wide range of projects from collecting and distributing shoes for children from low income families, befriending services for the elderly, care and support for domestic abuse survivors and a wide variety of workshops for students, adults and young adults with learning disabilities, disabilities and or mental health challenges.

The fund has been made up of money raised by the Tandridge Together Lottery. Thanks to the success of the Tandridge Together Lottery, which launched in March 2018, the fund available to local organisations increased this year. 10p from every ticket sold goes directly into the Tandridge Together Community Fund for the Council to distribute in small grants.

Later this year, we will be inviting local charities and voluntary groups in the Tandridge district to apply for grants which will be awarded by the Tandridge Health and Wellbeing Board in January 2026. The details will be made available on this page, we will issue a press release and post on our social media accounts and we will notify all local good causes registered on our Tandridge Together Lottery.

# LITTLE ACORNS PRESCHOOL

The Little Acorns Team

Please call: 01959 540775 or Email: [office@littleacornstatsfield.co.uk](mailto:office@littleacornstatsfield.co.uk)



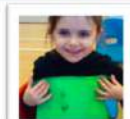
During our 1<sup>st</sup> Spring term, we have been looking at different countries around the world relating to our children and families here at Little Acorns.

We have based activities around Italy, making venetian masks and South Africa making Malva Pudding, to name just a few.

The children had the opportunity to taste foods from around the world, which were kindly homemade by our parents.



We have painted, mined for gold, played with sensory Tuff trays, made Pizzas, explored ice trays and have been involved in STEM activities (Science, Technology, Engineering & Maths).



The children had fun making clay Snakes for Chinese NY & decorating them with jewels.



Little Acorns also supported the **RSPB's Big Garden Bird Watch** this year!

The children made bird feeders and took home a bird watching/identifier booklet for them to use at home.



## MONKEY PUZZLE DAY NURSERY



We at Monkey Puzzle Tatsfield have had a fun filled month!

One of our biggest focus across the nursery was Children's Mental Health week! The children have taken part in activities where they explore their emotions and taking care of our mental health, doing things that makes us feel good!



They have had relaxing spa days, hairdressers,

making smoothies with our chef and lots more!

Of course, we have Mother's Day coming up which the children will be creating lovely cards and presents to give to their mums.

We also host a Mother's Day tea for all our amazing mums to join us for some fun activities to do with their little ones and to make them feel special!

We also will be taking part in World book day, Science week and St Patricks day too!



### **Are you looking for childcare?**

We offer a high standard of care to children aged 3 months to 5 years old. Providing a range of fun and exciting activities, both indoors and outdoors all year around, exploring our local environment and all it offers on local trips, celebrating all traditions and cultures.

**We have spaces available here at Monkey Puzzle Tatsfield**, if you are interested and want to book a tour of the nursery, please contact us

**Phone - 01959928427**

**Email – [manager@monkeypuzzletatsfield.co.uk](mailto:manager@monkeypuzzletatsfield.co.uk)**

## TATSFIELD PRIMARY SCHOOL

We celebrated Children's Mental Health Week at Tatsfield by taking part in lots of events across the school to support this year's theme - **Know Yourself, Grow Yourself!**

We started the week with an online assembly from the School of Kindness ([www.schoolofkindness.org](http://www.schoolofkindness.org)) with about 30,000 other children across the country! We learnt about what mental health is, why it is important and the many different ways we can improve our mental health. We also spoke about the importance of kindness - to ourselves and to others. Nominations for the national Kindness Awards are open – do you know someone who deserves an award? You can nominate them here: [www.schoolofkindness.org/kindnessawards](http://www.schoolofkindness.org/kindnessawards).



They are open – do you know someone who deserves an award? You can nominate them here: [www.schoolofkindness.org/kindnessawards](http://www.schoolofkindness.org/kindnessawards).

We welcomed two visitors into school to support our understanding of mental health. Ella Abbott from Abbott Movement (@Abbott\_movement) led dance workshops and spoke about the benefits of dance for mental health and wellbeing. Alice Coombe from Kind Minds (@kindmindslifecoach) delivered workshops to help us understanding how the different parts of our brain works and different regulating strategies we can use ourselves.

During lunch times, our Year 6 Learning Leaders ran a range of activities for children, including 'my kindness ideas', 'what my happy looks like', a kindness wordsearch activity and making a 'hug' to give to someone.

**Rachel Jewitt, Headteacher**

## NOT SO YOUNG CLUB

Gosh this year is flying by! Sadly in January we attended Enid's funeral. She actually would have been delighted to see so many people and lots of cake. Our February meeting was well attended and we started our new games programme after receiving funding from the Councillor Community Fund. Claire headed the game as quiz master and a good time was had by all.

In March we will be meeting on 11th at 12.30 with lunch at 1pm. Our activity will be another games event created by Claire so members come prepared! Jackie will also be cooking so no doubt a delicious treat will be made for all to enjoy.

This year we are planning to host a fundraiser...Bingo in Ye Olde Ship! Kindly Tina has offered us the use of her beautifully redecorated establishment so watch this space (and various others for a date and time). We have lots to look forward to this year and will keep members busy with events. Don't forget if you know anyone who may like to join us or would like to come along yourself to try out our friendly club please give me a call.

**Keep safe, Sue Dowse, [notsoyoung100@gmail.com](mailto:notsoyoung100@gmail.com) 0781611092**

## TATSFIELD WI



Since I last reported we have had three meetings. At Christmas we enjoyed a successful “Bring and Share” lunch accompanied by festive games, music and much laughter and chatter.

As is our tradition in January, when everyone needs a lift from the cold and miserable weather, we shared delicious hot soup and tasty fruit pies at our New Year lunch.



On February 4<sup>th</sup> we were revisited by a popular American speaker who brought to life the phenomena that was Harry Houdini. His whole life seemed to be based on self-promotion where the truth was cloaked in a veil of fantasy. He was certainly a physically strong and dedicated master of his art whose relatively short life was packed with world class performances. His name synonymous with death defying escapades.

We are very proud to announce that March 2025 marks the 100th anniversary of Tatsfield Women’s Institute. The WI movement in the UK is 110 years old this year so we are one of the longest running institutes in the country. Despite this we keep up to date with today’s issues and events. We will be present at the ClubFest event on Westmore Green in May. We are happy to talk to and support any younger ladies who might be interested in setting up a new group of like-minded woman to meet the demands and interests of their busy lives whilst creating the supportive structure we have enjoyed for many years.

Don’t forget, everyone is invited to come along for a cup of coffee or tea and a friendly chat every Wednesday morning between 10.30am and 12pm in the WI Hall in Paynesfield Road. Apart from a short break over Christmas week, our Pop In runs every Wednesday of the year and has done so for many years, hosted by a small rota of WI volunteers. A great way to meet other village residents – all ages welcome. So if you are passing, Pop In.

I would also like to remind you that our Hall is a local, cosy, warm venue for a meeting, family party or celebration just give us a call on 01959 577684.

**Susan Smale 01959 577660**

## TATSFIELD 100 CLUB

Congratulations to the winners of the Tatsfield PFA 100 Club for January 2025:

1 <sup>st</sup> Prize	Les Eames	£45.00
2 <sup>nd</sup> Prize	Dave King	£30.00
3 <sup>rd</sup> Prize	Tim Scott	£15.00

Thank you for supporting sport in Tatsfield. If you know of anyone who wishes to join the 100 Club (for a modest £6 per month), or if you would like additional numbers, then please contact me at

**leames200@gmail.com. Les Eames**

TATSFIELD HORTICULTURAL SOCIETY

# GARDENING CLUB

**“ANYTHING GOES!”**

**A TALK BY BRYAN EVEREST**

On general garden matters

**7.30 PM ON TUESDAY 4 MARCH 2024**

Doors open at 7pm

**AT THE WI HALL Paynesfield Road**



**\* A REPEAT APPEARANCE BY ONE OF THE BEST KNOWN GROWERS OF TOP CLASS FLOWERS AND VEGETABLES IN THE AREA.**

**\* BRYAN WILL ONCE AGAIN BE SHARING HIS KNOWLEDGE AND PRACTICAL EXPERIENCE WITH US. TIPS ON SOWING VEGETABLES THIS SPRING. HOW YOU CAN PRODUCE THE BEST SWEET PEAS THIS SUMMER. HOW TO EXHIBIT DAFFODILS AND TULIPS IN THE SPRING SHOW AND MUCH, MUCH MORE.**

**\* ANY PROBLEMS IN YOUR GARDEN? NOT SURE ABOUT THE IDENTITY OF ONE OF YOUR SHRUBS OR TREES? COME WITH YOUR QUESTIONS.**

**\* AS HE ALWAYS DOES, BRYAN WILL BE BRINGING A SMALL SUPPLY OF FLOWER AND VEGETABLE PLANTS - ALL TO BE OFFERED IN RETURN FOR SHOWING THE ITEMS IN THE SPRING SHOW.**

***ALL WELCOME – ADMISSION £1 (INCLUDING REFRESHMENTS)***



## ST MARY'S MATTERS

We remain in vacancy but are delighted that Curate, Revd Debra Elsdon, is based at the Rectory in Tatsfield with husband Ashley as she continues her vocational journey and develops her role within St Mary's and the wider Team Ministry.

Our main Sunday service with music is at 10am led by visiting clergy/lay ministers and Revd Debra as her schedule allows. Further information is in our Notice Sheet which can be accessed via the home page of our website: [www.lttm.org.uk/stmarys](http://www.lttm.org.uk/stmarys).

### LENT 2025

**Wednesday 5<sup>th</sup> March, Ash Wednesday.** No service at St Mary's. 8pm Service at St Peter's Limpsfield.

**Sunday 9<sup>th</sup> March, The First Sunday of Lent.** 10am Holy Communion with Hymns led by Bishop Chris Goldsmith.

**Saturday 29<sup>th</sup> March, Saturday 5<sup>th</sup> April, Saturday 12<sup>th</sup> April, Lenten 'Friendship Lunches' in the Millennium Hall.** 12noon – 2pm. Full details follow these pages.

**ST MARY'S CHURCH OPENING TIMES** Our pretty church is open for viewing, prayer or personal reflection from 9am - 3.30pm approx. on Tuesdays, Wednesdays, Thursdays, Saturdays and Sundays.

**PERSONAL PRAYER REQUESTS** If you wish to have prayers said on your behalf, there is a Prayer Request Book near the Baptism Font. Or please email your request to: [stmoffice.lttm@btinternet.com](mailto:stmoffice.lttm@btinternet.com)

**HOLY COMMUNION FOR THE SICK AND HOUSE-BOUND** Those unwell and/or house-bound who wish to receive Holy Communion at home or place of residence can contact our Churchwardens.

**LIFE EVENTS** We welcome enquires for baptisms, weddings, funerals and interment of ashes. Further information is on our website [www.lttm.org.uk/stmarys](http://www.lttm.org.uk/stmarys) or email the Parish Office at [stmoffice.lttm@btinternet.com](mailto:stmoffice.lttm@btinternet.com)

**FOOD DELIVERIES** We support the local community at Westerham foodbank which has seen an increase in households referred from a variety of agencies, alongside fewer donations. So they continue to need our help. Some require short-term support, some intermittently over a longer time and some for extended periods. We delivered on 13<sup>th</sup> February and will again on Thursdays 13<sup>th</sup> March and 17<sup>th</sup> April. Items currently needed include: cereal, soup, baked beans, jam, pasta sauces, rice, tinned fish, meat, long-life or powdered milk, custard and rice pudding. Please donate if you can. Non-perishable food donations can be left in the Narthex at St Mary's church, opening times above. Monetary donations made will be used to purchase food. Thank you for your continued support.  
**Hilary Vale 01959 577864**

**CHURCHYARD TEAM** Weather permitting our Churchyard volunteers will meet at 10am on Saturday 1<sup>st</sup> March for our first maintenance session of the year. **David Gulley**

**HIRE OF THE MILLENNIUM HALL** Our well-equipped Millennium Hall is open for bookings. Enquiries from individuals and groups are very welcome.

**Sheila Cook (01959 577443)**

### **ST MARY'S TATSFIELD, 100 CLUB RESULTS 2025**

#### **January Draw**

17 C Sweetenham £23      49 J Evans £14                      93 B Budgen £9                      St Mary's £44

#### **February Draw**

77 B Heffernon £23              26 M Langford £14              5 M&L Lambert £9              St Mary's £44

**ST MARY'S CHURCH ELECTORAL ROLL 2025-2026** The Church Electoral Roll is your parish church's register of electors. It is the list of those entitled to attend and to vote at the Annual Parochial Church Meeting where the elections take place for:

- (a) The parochial church council;
- (b) The parish representatives on the deanery synod.

Any person entitled to attend the Annual Parochial Church Meeting may raise any question of parochial or general church interest.

Preparation for a new Electoral Roll will take place from Sunday 30<sup>th</sup> March to Saturday 12<sup>th</sup> April 2025.

Under the Church Representation Rules any persons are entitled to have their names entered on the roll if they:

- Are baptised and aged 16 or over;
- Have signed a form of application for enrolment; and, either:
  - Are members of the Church of England or of any Church in communion with the Church of England being resident in the parish or (not being resident in the parish) having habitually attended public worship in the parish during the six months prior to the application for enrolment; or
  - Are members in good standing of a Church (not in communion with the Church of England) which subscribes to the doctrine of the Holy Trinity declaring themselves also to be members of the Church of England and having habitually attended public worship in the parish during the period of six months prior to enrolment.

If you wish to be considered for the Electoral Roll, please obtain a form from Chris Hancock (01959 577622), or from the Church Narthex.

*Please return completed forms by Saturday 12<sup>th</sup> April 2025 to: Chris Hancock (Electoral Roll Officer), 12 Shipfield Close, Tatsfield, Westerham, TN16 2A*

**ST MARY'S TATSFIELD – 'FRIENDSHIP LUNCHES' FOR LENT IN THE MILLENNIUM HALL  
SATURDAY 29<sup>TH</sup> MARCH, SATURDAY 5<sup>TH</sup>, SATURDAY 12<sup>TH</sup> APRIL: 12 NOON – 2PM**

We are pleased to continue our tradition of hosting a series of 'Friendship Lunches' on three Saturdays in Lent, the period leading up to Easter. These are a great opportunity to come together in a warm and welcoming setting to catch up with old friends and make some new ones.



So why not join us and enjoy a relaxed ploughman's style lunch including delicious warming homemade soup, bread, salad, cheese and pickles? We'll also have some finger food options for children, or you can bring your own toddler snacks if you prefer.

The suggested voluntary contribution for lunch is £3 per adult. Children's food and all craft activities are free. We want everyone to feel welcome at our lunches whatever their circumstances which means there is no request for payment on arrival. Instead, a discreet payment box is located inside the hall for those able to make a donation. For those with crafty fingers they'll also be some optional and free all age Easter crafts to try, including a challenge to decorate a real egg for our Easter Tree!

All proceeds from this year's lunches will go to the Bishop of Southwark's Annual Lent Call to raise funds for local community projects, and projects in our Link Dioceses in Zimbabwe and Jerusalem, as well as calling parishes to a time of prayer and contemplation. The Bishop's Lent Call for 2025 will support projects that help children and young people recover from trauma and encourage their mental wellbeing.

I do hope you'll be able to join us. These are 'drop-in events' so there is no need to book, but if you haven't been before and would like more information, just call or text me on 07710 411 587.

**Maryrose Fawke**

**CONTACTS**

**St Mary's Church Office:** The Parish Office, High Street, Limpsfield RH8 0DG.  
Phone :01883 712512 Email: stmoffice.lttm@btinternet.com  
Open Thurs 9.30-13.30 - emails are checked regularly for urgent matters.

**Team Rector:** Revd Helen Cook 07530 609511  
Email: hjwcook@yahoo.co.uk (day off Friday)

**Curate:** Revd Debra Elsdon 07436 172130  
Email: curate.lttm@gmail.com (days off Mon & Fri)

**Parish Administrator:** Steve Tatler - Church Office Thurs 9.30 -13.30 (details above)

**Wardens:** Marjory Broughton (01959 541059) / Chris Hancock (01959 577622)

**St Mary's Website:** [www.lttm.org.uk/stmarys](http://www.lttm.org.uk/stmarys)

## REGULAR TATSFIELD EVENTS AND INFORMATION

<b>Sun</b>	9.30 am	Yoga with Lexy, VH
	10.00 am	Church service – StM
<b>Mon</b>	9.30 am	Tots on Top – CH
	9.30 am	Shape and Tone with Gary - WIH
	1.30 pm	Bridge Club – WIH
	6.30 pm	Cubs - SH
	7.00 pm	Art Group – VH [Term time]
	8.15 pm	Bingo – TVC
<b>Tue</b>	10.00 am	Chair Yoga with Mel - WIH
	1.00 pm	Not So Young Club (2 <sup>nd</sup> Tuesday of the month) WIH
	2.30 pm	WI Meeting (1 <sup>st</sup> Tuesday of the month) WIH
	4.00pm	Paracise VH
	7.00 pm	Scouts and Explorers – SH
	6.15 pm	Barré with Fi - VH
<b>Wed</b>	10.30 am	WI Pop In – WIH
	2-4 pm	Composting Site CLOSED from 1 <sup>st</sup> October
	6.00 pm	Shape and Tone with Gary – WIH
	6.00pm	Over 8s Jujitsu, SH
	7.30pm	Adults Jujitsu, SH
	7.30 pm	Yoga – VH
<b>Thu</b>	9.30 am	Yoga with Lexy, StM
	9.30 am	Shape and Tone with Gary, WIH
	2.00 pm	Scrabble at AMB (2 <sup>nd</sup> Thursday of the month)
	1.30 pm	Hear Here Sessions – AMB (1 <sup>st</sup> Thursday of the month)
	6.00 pm	Over 8s Judo – SH
	6.15pm	Barré with Fi, VH
	7.30 pm	Adults (14+) Judo - SH
	7.30 pm	Tatsfield Singers - TPS
8.00 pm	Table Tennis – VH	
<b>Fri</b>	9.30 am	Combat Fitness - SH
	1.30 pm	Short Mat Bowls –VH
	4.15pm	Boom Arts Academy Tots Street Dance – VH
	4.45pm	Boom Arts Academy Lower Junior Street Dance – VH
	5.30pm	Boom Arts Academy Theatre and Singing – VH
	6.15pm	Boom Arts Academy Junior Street Dance – VH
	8.00 pm	Badminton Club – VH
<b>Sat</b>	9.00 am	Under 8s Judo – SH
	10.00 am	Composting Site CLOSED
	10.15 am	Over 8s Judo - SH

**Venues:** AMB - Aileen McHugo Building • CGA - Community Games Area • MH - Millennium Hall • SH - Scout Hut • StM - St. Mary's Church • TACG – Tatsfield Allotments and Community Garden • TVC - Tatsfield Village Club • TPS - Tatsfield Primary School • VH - Village Hall • WIH - Women's Institute

*Tatsfield*

**CLUBS  
FESTONS**  
&  
**VOLUNTEER AWARDS**

**Voting closes  
16th March!**

**NOMINATE YOUR FAVOURITE VOLUNTEER**

# TATSFIELD CLUBFEST AND VOLUNTEER AWARDS

## SUNDAY 11TH MAY 2025, WESTMORE GREEN, TATSFIELD

Let's celebrate all that is great about our clubs and village community. Join us for an afternoon of fun and celebrations in May!

### ClubFest

ClubFest is an opportunity for Tatsfield's clubs and societies to promote themselves to villagers and welcome new members. This is a call to **all Tatsfield Village organisations** to think about how you would like to promote yourselves on Sunday 11th May. The event will be held on Westmore Green, Tatsfield.

### To promote your club or society for FREE:

Please email us at the Parish Magazine, tatsfieldpm@gmail.com, to let us know that you would like to participate as a society. This is free of charge, and we will reserve a space on the green and in the event programme.

**If your organisation would like run a demonstration of any kind, we would be very excited to see it!** Please let us know what you would like to do, and how long for, and we can accommodate that into the event programme.

### Volunteer Awards - nominations now open!

Tatsfield Parish Magazine would like to recognise the contributions of our village volunteers who give their time for the village and its residents and the difference they have made to our community. Our awards are:

**Young Person of the Year (under-18)** A young person who has: embraced volunteering for the village; overcome personal difficulties; supported and/or inspired other young people to cope with difficulties; challenged themselves.

**Good Neighbour of the Year** A neighbour who goes above and beyond loaning some sugar – demonstrating true generosity of spirit, always there when you need them and happy to help with the smallest of things.

**Club Leader of the Year** A club Chair/Leader who goes the extra mile to inspire, ensuring that your organisation has a varied and engaging programme of activities.

**Club Secretary/Treasurer of the Year** Good organisation and management of limited funds are key to any club running smoothly and often take place out of the limelight. Does your club secretary/treasurer deserve a special mention?

**Club Member of the Year** A club member who is the life and soul of the party!

**Outstanding Contribution to Tatsfield** An individual, group, or village organisation who has made a real difference to community wellbeing in Tatsfield or indeed to our village environment.

**Friend of Tatsfield** An individual that contributes to the Tatsfield way of life, even though they don't live in or around the village (perhaps emergency services, post people, bus drivers, refuse services).

**Long Service Award** A Tatsfield resident who has given their time and been instrumental in setting up and supporting organisations and facilities that benefit the village as a whole.

What has been the impact of the person / group on you or the local community? Who and how have they helped? What do the volunteers do, why are they special?

# VOLUNTEER AWARDS NOMINATION FORM

To nominate for the volunteer awards, please complete the nomination form online at [www.tatsfield.org.uk](http://www.tatsfield.org.uk) , or simply follow the link from this QR code:

To submit a form in person please complete the details below and post/drop in to Appledore, 56 Paynesfield Road, Tatsfield.

**Please submit all nominations by Sunday 16th March.**



**1: AWARD CATEGORY - please tick category you are nominating in:**

Young Person of the Year (under-18)	<input type="checkbox"/>	<input type="checkbox"/>	Club Member of the Year
Good Neighbour of the Year	<input type="checkbox"/>	<input type="checkbox"/>	Friend of Tatsfield
Club Leader of the Year	<input type="checkbox"/>	<input type="checkbox"/>	Outstanding Contribution to Tatsfield
Club Secretary/Treasurer of the Year	<input type="checkbox"/>	<input type="checkbox"/>	Long Service Award

**1: NAME OF NOMINEE**

**2: CLUB/SOCIETY (IF APPLICABLE)**

**3. WHY ARE YOU NOMINATING THIS PERSON?**

**4. WHAT IMPACT HAS THIS PERSON HAD ON YOU OR THE COMMUNITY?**

**5. WHAT MAKES THIS PERSON SPECIAL?**

*Tatsfield*

**CLUB  
FEST**  
&  
VOLUNTEER AWARDS

**2025**

**CELEBRATING  
ALL THAT'S  
GREAT ABOUT  
TATSFIELD**

- **NOMINATE YOUR FAVOURITE VOLUNTEER**
- **PROMOTE YOUR CLUB OR SOCIETY**
- **DEMONSTRATE WHAT YOU DO!**

**MORE INFORMATION INSIDE**



## UPCOMING EVENTS – VILLAGE AND BEYOND

### MARCH

1 <sup>st</sup> Sat	10.00am	Churchyard Tidy Up (weather permitting)
1 <sup>st</sup> Sat	12.30pm	Southern Counties Drama Festival, Barn Theatre
1 <sup>st</sup> Sat	7.00pm	Southern Counties Drama Festival, Barn Theatre
4 <sup>th</sup> Tue	7.30pm	THS Gardening Club, Bryan Appleyard 'Anything Goes', WIH
5 <sup>th</sup> Wed	8.00pm	Ash Wednesday Eucharist at St Peter's Church, Limpsfield
13 <sup>th</sup> Thu	7.00pm	Blue Stockings, Young Oxted Players, Barn Theatre
14 <sup>th</sup> Fri	7.00pm	Blue Stockings, Young Oxted Players, Barn Theatre
15 <sup>th</sup> Sat	2.00pm	Blue Stockings, Young Oxted Players, Barn Theatre
15 <sup>th</sup> Sat	7.00pm	"Lee Miller", Curzon Cinema, VH
15 <sup>th</sup> Sat	7.00pm	Blue Stockings, Young Oxted Players, Barn Theatre
19 <sup>th</sup> Wed	7.30pm	Wonder by Tailfeatherdance, Barn Theatre
20 <sup>th</sup> Thu	7.30pm	Amy Johnson's Last Flight Out, Barn Theatre
21 <sup>st</sup> Fri	7.45pm	Johnny Cash Revisietd, Barn Theatre
22 <sup>nd</sup> Sat	12.30pm	The Ultimate Bubble Show (magic show), Barn Theatre
22 <sup>nd</sup> Sat	3.30pm	The Ultimate Bubble Show (magic show), Barn Theatre
29 <sup>th</sup> Sat	12.00pm	Lenten Friendship Lunch, MH

### APRIL

2 <sup>nd</sup> Wed	7.45pm	Now That's What I Call Rodgers and Hammerstein, Barn Theatre
3 <sup>rd</sup> Thu	7.45pm	Now That's What I Call Rodgers and Hammerstein, Barn Theatre
4 <sup>th</sup> Fri	7.45pm	Now That's What I Call Rodgers and Hammerstein, Barn Theatre
5 <sup>th</sup> Sat	12.00pm	Lenten Friendship Lunch, MH
5 <sup>th</sup> Sat	2.30pm	Now That's What I Call Rodgers and Hammerstein, Barn Theatre
5 <sup>th</sup> Sat	7.45pm	Now That's What I Call Rodgers and Hammerstein, Barn Theatre
6 <sup>th</sup> Sun	10.30am	Great British Spring Clean, Village Litterpick, Westmore Green
12 <sup>th</sup> Sat	12.00pm	Lenten Friendship Lunch, MH
12 <sup>th</sup> Sat	3.00pm	THS Spring Show, VH
19 <sup>th</sup> Sat	1.30pm	Ever After – Fairytale Singalong, Barn Theatre
22 <sup>nd</sup> Tue	7.30pm	LCA MT Seniors – Rock of Ages Teen Edition, Barn Theatre
24 <sup>th</sup> Thu	7.30pm	LCA MT Juniors – Finding Nemo JR The Musical, Barn Theatre
25 <sup>th</sup> Fri	7.30pm	Gh Management – Classic Rock Revival, Barn Theatre
26 <sup>th</sup> Sat	7.00pm	"The Critic", Curzon Cinema, VH
26 <sup>th</sup> Sat	7.45pm	Not the Rolling Stones, Barn Theatre

### MAY

4 <sup>th</sup> Sun	11.30am	Tatsfield Art Group Exhibition, VH
5 <sup>th</sup> Mon	11.30am	Tatsfield Art Group Exhibition, VH
8 <sup>th</sup> Thu	tbc	VE Day Celebration, Beacon Lighting, Bakery Lawn
10 <sup>th</sup> Sat	7.30pm	Haru Ushigusa plays for North Downs Sinfonia Concert, VH
11 <sup>th</sup> Sun	1.00pm	Tatsfield ClubFest and Volunteer Awards, Westmore Green
23 <sup>rd</sup> Fri	7.45pm	The Roy Orbison Experience, Barn Theatre
30 <sup>th</sup> Fri	7.45pm	Truly Collins (Music of Phil Collins and Genesis), Barn Theatre

## TATSFIELD HORTICULTURAL SOCIETY SPRING SHOW

When the GLOOMY DAYS are over

We all need something to look forward to at this time.

The Tatsfield Horticultural group are planning an event to lift your mood.

Our SPRING SHOW will be held on Saturday April 12th.



This is the moment to plan your entries as GARDENERS, COOKS, ARTISTS, PHOTOGRAPHERS, CRAFTERS and FLOWER ARRANGERS of all ages.

All classes are in the current yearbook on pages 29 - 33. Let me know if you need a copy.

Classes to tempt you.

Photography:	'In Bud'
Flower arrangement:	'Tea Pot' an arrangement of flowers and foliage in a tea pot.
Craft:	'A Material Picture. Any medium.'
Horticulture:	'Pot or Bowl of Daffodils'
Art:	'The Easter Bunny'
Juniors:	'A Sculpture from Natural Materials'

Enter via the website - [tatsfieldhorticulturalsociety.weebly.com](http://tatsfieldhorticulturalsociety.weebly.com)  
or on form in yearbook by 10<sup>th</sup> April.

**Carol Gaskell**

**Tel:07815775859**

**Email: [carol.gaskell1@btinternet.com](mailto:carol.gaskell1@btinternet.com)**

### TATSFIELD ONLINE

**Village website:** [www.tatsfield.org.uk](http://www.tatsfield.org.uk)

**Village facebook page:** search for 'Tatsfield Village' on facebook

**Tatsfield Talk facebook group:** search for 'Tatsfield Talk' on facebook, and ask to join to be able to view and post. **Twitter:** @tatsfieldtweet

### PARISH MAGAZINE EVENTS LISTINGS

If you would like your event included in this diary in future, please send details to [tatsfieldpm@gmail.com](mailto:tatsfieldpm@gmail.com). Please also let us know if any information has changed.

## CRAFTING AT SHEREE'S

One very rainy Thursday evening last December I ran a needle felting workshop in Sheree's Tearoom helping a group of nine ladies to make their own felted wreath. It was a wonderful evening with lots of laughter and learning going on. It was due to the overwhelmingly positive feedback from those participants, all asking for more, that we decided to launch a series of evening crafting workshops at the Tearoom, taking place monthly on a Thursday evening.



The benefits of crafting to people's well-being and mental health are well known. Having an opportunity to learn a new skill and to produce something yourself in a relaxed atmosphere is incredibly rewarding and also a lot of fun! The chance to spend time with friends and meet new people while enjoying a lovely free coffee and cake makes it even more appealing!



Having presented a number of crafting workshops in the area over the past year I am very aware of costs and Sheree and I are confident we are keeping prices as competitive as possible whilst ensuring some additional income for both the Tearoom and the tutor.

In the short term I will be hosting a number of the upcoming events as we slowly increase our bank of homegrown talent. If you are an experienced crafter with a particular skill do please get in touch. If you are unsure or not confident on how to run a workshop I am very happy to provide initial support in planning and running a session. We are particularly keen to talk to anyone who can teach Willow Weaving.

Following our first two successful workshops on Journal Making and Macramé this month's workshop will focus on 'Painting with Wool'. Our plans for the rest of the year are nearly complete and will include making: rag wreaths; sugar craft cake toppers; sewing and appliqué; Christmas table decorations; macramé gnomes and felt Christmas puddings.



For full details of our upcoming events please see the Events board in store or visit our **Facebook page: Crafting at Sheree's**. To book a workshop or enquire about becoming a tutor please **email: [craftingatsherees@hotmail.com](mailto:craftingatsherees@hotmail.com)**

\*\* At time of writing there are a few spaces left for our Painting with Wool workshop on Thursday 27<sup>th</sup> March from 7-9pm.

**Jane O'Keefe**

## FAIRTRADE AT SHEREE'S



As many of you already know Tatsfield is a Fairtrade village. The aim of Fairtrade is to help promote the fair treatment of workers, producers and farmers across the world. Also, it is to equip farmers with the skills they need to mitigate the impact of climate change on their crops and livelihoods. One of our roles in the endeavour to be a Fairtrade village is to encourage the sale and use of Fairtrade products in the village.

We are so fortunate in Tatsfield that Sheree, whose wonderful shop in the centre of the village supports and promotes Fairtrade goods.

Sheree has recently added to her small but significant stock. She now sells Both Machu Picchu ground and whole coffee beans, Mayan Gold coffee beans, Zaytoun Oil, Maltesers, Clipper Earl Grey teabags and Fairtrade Flapjacks.



Zaytoun Medjoul Dates are sold normally at Christmas, these are available also during the year. If anyone would like some at other times, please let Sheree know and they can be ordered.

Do try out the Fairtrade stock from Sheree's, but also wherever you shop look out for the Fairtrade mark which can be found on over 6,000 products, including clothing, cotton,

cold drinks and juice, flowers, sweets, snacks, grains, herbs, spices, oil, sugar, wine and even beauty products. Fairtrade fruit and vegetables have also become available in the Co-op, Sainsbury's, Waitrose and online at Ocado. Wherever you shop for groceries, you should be able to find a range of Fairtrade products. The Gregg's chain sells a wide range of Fairtrade goods too including tea, coffee, and brownies.

Thank you for supporting Fairtrade, with every purchase you are making a positive difference.

**Hilary Harber**

**Website:** [tatsfieldfairtradevillage.weebly.com](http://tatsfieldfairtradevillage.weebly.com)

**Facebook:** [facebook.com/tatsfieldfairtrade](https://facebook.com/tatsfieldfairtrade)

**Email:** [tatsfieldfairtradegroup@gmail.com](mailto:tatsfieldfairtradegroup@gmail.com)

**CHOOSE THE WORLD  
YOU WANT**



## THE TATSFIELD GARDENER IN MARCH

After a seemingly endless dull, cold and wet winter we are finally seeing some better gardening weather; there is so much to do to catch up we need to take advantage of the good weather. Starting the garden clear up this late brings its own problems, there will be perennials, bulbs and shrubs emerging with soft shoots that can be damaged so go carefully! Another challenge facing the keen tidy gardener is that at this time of the year a lot of garden friends will be emerging from hibernation and hungrily feeding on slugs and other garden pests. If you have piles or layers of leaves in the corners of the garden there is a good chance that they will have stag beetles, slow worms, hedgehogs and other species that are difficult to see. Please do not make a bonfire!, try and find a corner to stack this garden waste, it will settle down very quickly and in a year it will be ideal for use as a garden mulch.

But what is a mulch, why do we promote its use with such enthusiasm? A mulch is a layer of organic material placed on the surface of soil around permanent planting; this layer excludes light and suppresses weeds, it acts like a sponge holding moisture at the surface that filters down to the root zone of the plants, it also continues to break down and is taken down into the soil by worms and other tiny creatures improving soil structure (especially our clay soil). An additional bonus is that a garden with mulched borders looks very smart indeed!!

I was asked recently if it was now too late to prune roses? As is often the case in gardening the answer is yes, and no! If your rose is neglected with a tangle of branches and plenty of dead wood then sort it out now, give it a thick mulch (about 4" deep) and it will respond but start flowering later on after making new flowering shoots. However, if your rose is generally ok and is already making new shoots then leave it alone, enjoy the first flush of flowers and make sure to prune if when the flush of flowers is finished; this involves cutting the old flowering shoots down by about half. Don't forget to also remove any dead and weak shoots as this helps with making new shoots but also improves the appearance of your rose bed.

If you have not already done so, it is time to wake up those perennial plants in winter store. Dahlias, Fuchsias, Geraniums, Cannas and tuberous Begonias. Sort through them carefully to avoid damaging emerging buds and shoots; remove anything that is soft and rotting and water thoroughly. On mild days put them outside but make sure to put them away on a chilly night! **Jon Allbutt**

## WILDLIFE GARDENING TIPS

What a wonderful start to the gardening year! Despite the rain, we welcomed in the New Year with super-early January blooms from the daffs, snowdrops, cyclamen and others. And hopping happily amongst them were mating pairs of robins, blackbirds and dunnocks. This coupling-up seemed remarkably early, but it made for a fantastic

songbird serenade. All of this means that we are now entering the nesting season, which is the time to make sure there are plenty of nest building materials around; dried grass, small twigs, moss, wool (nothing synthetic), pine needles, etc. Mostly this means just leaving the garden a bit untidy, but I've also been given a bird feeder full of alpaca wool for our feathered friends, so I'm going to try that too. Should you decide to encourage nesting hopefully you'll be rewarded with an increase in bird population. And, if so, they'll return the favour by helping out with the gardening as they're not just a delight to watch and listen to; they are brilliant at pest control and can help with weeding and flower pollination.

It isn't only the birds that will be looking for new homes, there will be plenty of other wildlife doing the same too, including the humble Bumbles and other bees, so now is a good time to help them out with a bee hotel. There are plenty of bee hotels available to buy but alternatively they are very cheap and easy to make; simply take, or make, a small wooden box and fill it with dry hollow plant stems such as old flower stalks or bamboo canes, which should be around 15cm long. The stems should be laid flat, and ideally holes should vary in diameter from 4 to 12mm to attract a range of species to come and shelter in them. The most important thing is to put it in the right place (*location, location, location!*) which should be dry and preferably where it will catch the morning sun to give them a good start to the day. Solitary bees might move in permanently, but Bumbles might only stay until they need somewhere bigger to raise a family.

**Interesting fact of the month....**The robin was elected as Britain's national bird (whatever that means) when it romped ahead in a ballot back in 2015. However, a less well-known fact about robins is that they ingeniously rid themselves of parasites by catching ants and millipedes to rub into their feathers. The defensive chemicals released by the hapless insects act as a kind of pesticidal nit-comb, killing off any mites and ticks. Clever, huh? How on earth did they work that out?

Just a thought, but if it's the early bird that catches the worm, what's in it for the early worm? **Jim Kenney**

## **TATSFIELD ALLOTMENT NEWS**

By the time you read this, we will be well into 2025 and so we reflect on the allotment news of the past year. We had our AGM on a cold and snowy January night, so only a few hardy souls made it. But somehow it made for a lovely cosy meeting and everybody felt comfortable about giving an opinion without a huge audience to impress, so lots of interesting ideas banded about.

We talked about our successful social occasions of 2024 - the plant swap in May, the BBQ in August, both well attended. But it's not all about the social side - although these are regular annual fixtures and we do love a BBQ!

But there is always lots of maintenance work being done behind the scenes by the faithful committee. Mike Sarll mows the perimeter paths, Ian McAffer keeps the container area tidy, Jim Mullen & his team keep the site tidy, and Len & Juliet Morris have been a huge help, pruning all the hedges - not a small task! Alan still fixes the taps.

We are amazed to remember that the allotments have been going for over 15 years now and we remain in a healthy position financially and environmentally. Although we do have a few plots to spare as age takes its toll on some of our stalwart originals who have had to retire from the site. *Anyone interested in taking on a plot, please ring Alan on his mobile - 07899 725 944 he will be happy to give you any advice or details you need.* **Liz Armitage**

## **NORTH DOWNS SINFONIA – ‘THE FAMOUS AND THE FORGOTTEN’**

Our next concert, on Saturday 10<sup>th</sup> May at 7.30pm as usual, will see us welcome back Haru Ushigusa, this time playing the stunning Bruch Violin Concerto No 1. Bruch finished it in 1867, and it has since then been one of the most popular violin concertos ever composed. This is his best-known work, and it was voted top of the classical charts by the public in a Classic FM poll. Haru has played with us several times before, always to great acclaim, and we are delighted that she will be joining us again.

The orchestra will also be playing the Schubert ‘Overture in an Italian Style’, and the Mendelssohn Symphony No 8, the so-called ‘Lost’ symphony, which is of course the ‘Forgotten’ part of the concert. He first composed this at the tender age of 13 as a purely string symphony, but later added wind and timpani. It is typical Mendelssohn, being very melodic, despite being originally composed when he was so young.

The concert will be conducted by Ben Knowles, who has conducted NDS on several occasions before.

It has been six years since we increased our prices, but unfortunately rising costs have forced us to do so for this concert. Tickets will be £13, with concessions £10, but each ticket will now include a programme, which we currently sell separately. As usual, they will be available from Sheree’s nearer the date of the concert, and will also be available to book by phoning 01959 577659, or emailing [northdownssinfonia@gmail.com](mailto:northdownssinfonia@gmail.com). **Peter Maynard**

## NIGEL'S NATURE NOTES

Firstly, this month, let's dispense with the suspense! Over to Jim (Yeeles):

(11.02.25) *'Oh dear - my 'interesting observation' turned out to be a little disappointing in the end. You will recall me telling you that **Nuthatches** regularly use the nest box my neighbour, Phyllis Lawrence, has mounted on the front of her garage. Throughout December a **Kestrel** decided this would make a great roosting spot. I suspect the feisty Nuthatch would disagree and feared it would not end well. Fortunately, the Kestrel must have found better accommodation and has moved on and I no longer see it in the area. I'm sure Phyllis is also relieved that she no longer has to be wary of the copious droppings when making her way to her car! Unfortunately, incompetence meant I failed to get a decent photo suitable for publication but the attached clearly shows the squatter alongside the massive mud mound that the Nuthatches faithfully top-up every year, now standing at least 30cm high.'*

Thanks for this, Jim. Don't worry, Nuthatches are perfectly newsworthy, and interesting.

Forgive me for asking, but as the photo (unpublished) is quite faint I'm struggling with the identification. Your on-site observation is doubtless correct and of more value than my conjecture, but I can't help thinking that this behaviour seems very much like that of a Sparrowhawk. Is Phyllis's driveway a suitable habitat for a Kestrel?

(16.02.25) *'The roosting spot would not be a suitable nest site for either species with barely a toe-hold on top of the box, but it is nice and sheltered with a large overhang. I agree it is difficult to identify in my earlier image but you can just about make out some spotting on the tail feathers. I wouldn't say my knowledge is better but I had the distinct advantage of knowing we had a youngish (presumed) Kestrel hanging about Tatsfield Green since late summer and it could often be spotted perched on the power lines and poles staring intently at the grassland, scanning for small mammals, no doubt. Conclusively, though, on a couple of occasions we saw the bird perching at dusk before swooping towards Phyllis' garage!*



*I don't know about you but I'm certainly looking forward to some drier weather and the countryside springing back into life.'*

Well, Jim, as if by magic, we have evidence that the countryside is indeed 'springing back into life'. The dismal, wet weather hasn't prevented the first display of spring wild flowers from appearing in our gardens, as reported by Mary (Smith):



(07.02.25) 'Recently you have had subjects like fungi or caterpillars in groups together in the magazine which have been very interesting. I'm sending this photo in case others have sent in pictures of unseasonal flowers. This **Cowslip** started flowering in November and this photo was taken a week ago.'

Thanks for this, Mary; it's always a pleasure to hear from you. I've had a large number of **Primroses** in bloom since about the same time (November) but no sign of cowslips as of yet. If yours are out, I'm guessing I'll see mine sometime soon. Meanwhile, snowdrops are bursting open across the garden. It won't be too long before the Fritillaries are also showing their heads through the lawn. I'm sure you would agree that, following the long, grey winter months, it's a joy to see this multitude of flowers. A little more warmth in the sun and we'll really know that spring is with us, perhaps bringing out that reclusive first Brimstone of the year. I'll be expecting an email from Ruth before too long! Or perhaps it's some other reader's turn to be a champion observer? Perhaps it will be you? (Simply send a message stating the date, time and location of your Brimstone sighting.)

Finally, this month, we have an email from Christine and Paul (Stainer), in Greenway, who are being eaten out of house and home by a flock of doves. The question is, are they domestic or feral?

(10.12.24) 'We've been having many **Doves** visit us each morning for feeding for a long time now, as I am sure many of us have. Not sure where they have come from. Any ideas?'

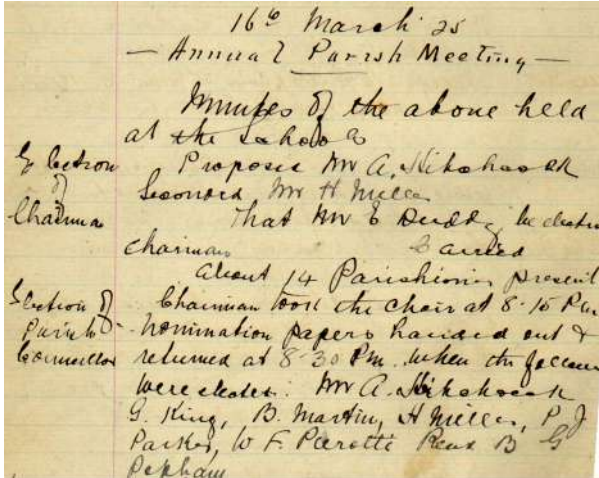
A beautiful flock, Christine. How kind of you to feed them. Where are they from? I agree that it would be nice to know. Is this a village flock? Own up – who's erected a dovecote? Anyone?



Next month – a welcome update from Martin Allen and a selection of notes from John's (Rosenbaum) annual, 'Bird Observation Review'. What might we find? A swarm of Swallows? A mass of Martins? A satiety of Swifts? Mmm, I wonder. You might be surprised; I certainly was.

**Any news or views? Contact: [nigelshaw2000@hotmail.com](mailto:nigelshaw2000@hotmail.com)  
Alternatively, drop a note in to 'Primrose Ridge', Greenway.**

March is the month when the parish council holds its 'Annual Parish Meeting' (APM) at which the council and other bodies report on the previous twelve months of activities. Back in 1925 the APM was also election time. In those days members were elected merely on a show



of hands. This was the way things were in parishes until secret ballots were introduced after the Second World War.

You might think that a large turnout of villagers would therefore be guaranteed. Far from it in 1925. According to the minutes, only fourteen parishioners turned up.

March 1925 was when the rural district council formally took over land for council houses in Tatsfield and there

was discontent about the way the issue had been handled. The parish council favoured a site next to the Village Hall bordering on the Approach Road section of Westmore Green, but land along Lusted Hall Lane had been chosen instead. The meeting resolved to object because of the difficulty of getting a water supply and drainage installed as well as over the nature of the "dangerous and narrow lane". Another resolution was passed complaining that the parish council had had no say in selecting tenants as it "knew best the most deserving cases".

March also brought a novelty to Tatsfield. On March 10<sup>th</sup>, members of the local branch of the Red Triangle Club – a predecessor of the YMCA and the YWCA - were entertained with the "Evening Standard programme broadcasted from London". Not so many people had a wireless at home in 1925.

Meanwhile, the Westerham Herald had reported at the beginning of the month that the first meeting of Tatsfield's newly-formed Women's Institute had taken place. "It is hoped that it may make an appeal to all women in the village and so become in time a centre of wider interests". Between 40 and 50 potential members were apparently at that first meeting.

Ian Mitchell, Tatsfield History Project - [Tatsfield.history@talk21.com](mailto:Tatsfield.history@talk21.com) Tel: 577376  
Website: <https://e-voice.org.uk/tatsfieldhistoryproject/>

## THE NIGHT SKY IN TATSFIELD – MARCH 2025

Here we are again approaching the Spring Equinox which, astronomically speaking, marks the beginning of spring although if you go by the meteorological calendar, it began about three weeks earlier on 1<sup>st</sup> March. For astronomers, the ecliptic is the path of the Sun's yearly passage across the sky which twice crosses the celestial equator, the Earth's equator projected out into space. On 20<sup>th</sup> March at 9:01am the Sun sits exactly at the crossroads of those two lines and because it is on the equator we can say, in general terms, that day and night are equal.

This year, March is a good month for eclipses with one each of the Sun and Moon. On the 14<sup>th</sup> March there is an early morning eclipse of the Moon which begins at 5:09am and ends at moonset which, from our part of the UK, is about 6:20am. Sadly, this is only five minutes before the eclipse becomes total so we won't see the full effect of this event though we might be able to see the eclipsed portion turn a red/brown colour. It will depend on whether the sky is clear and on how good a view of the horizon you have close to the west which is where the Moon will set. Because a lunar eclipse requires the Sun and Moon to be opposite one another, then as the Moon sets, the Sun will be rising which will make observation more testing as the sky brightens.

The reason the eclipsed part of the Moon turns a red/brown colour is because, although the Moon is in the Earth's shadow and therefore no sunlight falls directly on it, some light from the Sun passes through the Earth's atmosphere, is refracted (bent) by it and reaches the Moon by indirect means.

Light, which travels as a wave, can be split into its seven constituent colours by passing it through a prism or by sunlight acting on raindrops to form a rainbow. The red light has the longest wavelength and so is refracted less whilst blue light is refracted more by having a shorter wavelength. This gives us the spread of colours that we refer to as a spectrum.

As light passes through the Earth's atmosphere it collides with the particles that form it and because of the relationship between the wavelength of the light and the size of the particles, the blue light is scattered much more easily leaving the red light to make its way to the Moon. This scattering of blue light also explains why the sky appears to be blue. If we had no atmosphere the sky would be black.

Then on the 29<sup>th</sup>, there is a partial eclipse of the Sun. This begins at 10:07am when the Moon first makes contact with the disk of the Sun. As time progresses, the Sun looks as if it has an increasingly large bite taken out of the upper right of it until at 11:03am, when 30% of the Sun is hidden, maximum eclipse is reached. After that the Moon gradually moves off the Sun until, at 12:00 noon, the eclipse is over.

We are currently close to the maximum of solar activity so it's possible that there may be a number of sunspots on view which will make the event even more interesting. However, please remember you must **NEVER** use any type of optical equipment to look directly at the Sun. If you do you risk blindness. The easiest and safest way is to watch

with the naked eye whilst wearing “eclipse glasses”. These are available for around £4 or £5 but please buy them from a reputable dealer such as [www.firstlightoptics.com](http://www.firstlightoptics.com) or [www.rothervalleyoptics.co.uk](http://www.rothervalleyoptics.co.uk)

**Brian Mills FRAS**

## THE ARTS SOCIETY LIMPSFIELD



**The Frick Collection and the Wallace Collection and their connection with Knole** by Hilary Williams.

**Date: Wednesday 26 March 2025. Afternoon Lecture starts at 2.15pm** at Limpsfield Church Hall and refreshments will be served before the lecture. **Evening Lecture (repeat) starts at 7.30pm** at Limpsfield Church Hall and refreshments will be served before the lecture. **Guests: £10.**

The collections at the Wallace Collection in London and the Frick in New York are linked by a circle of patrons, dealers and taste. Apart from Sir Richard and Lady Wallace and the American industrialist Henry Clay Frick, there was someone who worked for them all, who then left a related fortune to the mother of Vita Sackville-West. A great story.



**Anton Gaudi I Cornet (1852-1926) Master Builder of Barcelona** by Viv Lawes.

**Date: Wednesday 30 April 2025. Evening lecture only starts at 7.30pm** Limpsfield Church Hall and refreshments will be served before the lecture. **Guests: £10.**

Genius Spanish architect and designer Antoni Gaudí (1852-1926), a key figure in Catalan Modernism, stands as one of the creators of Barcelona's urban identity. Inventor of new techniques and a magpie enthusiast of all things botanical and sacred, Gaudí's most famous building, the Barcelona Church of the Sagrada Família, is Spain's most-visited monument and one of seven of the architect's works listed by UNESCO as a World Heritage site. Building works on Sagrada Família began in 1882 and are still continuing. This lecture examines Gaudí's work and legacy.



### **Unlock More Time with Surrey Libraries Super Access!**

Oxted library is excited to introduce Super Access, a new service designed to make Surrey Libraries even more accessible and convenient for you. Whether you have a busy schedule or simply want more flexibility, Super Access gives you the freedom to visit beyond regular staffed hours, letting you use library spaces whenever it works best for you.

#### **How does it work**

New technology has been installed which means that Super Access library members can enter the library outside normal opening hours, using just their library card and individual PIN code. Then they can use library services independently when staff are not present.

With Super Access you can:-

- Explore shelves filled with bestsellers and new titles
- Easily manage your books with Self-Service kiosks
- Access free Wi-Fi and library computers
- Print with ease
- Create your perfect work or study space

#### **How can I get a Super Access library membership**

To upgrade any Adult / Young Adult (16 plus) library membership to Super Access, a short introduction is required. This will ensure that customers have a safe and thorough understanding of how the technology works. Just book your introduction through the Super Access Eventbrite page:



By extending our opening times, we're unlocking the full potential of our library buildings, providing more opportunities for everyone in the community to enjoy these valuable spaces. With Super Access, you can use the library your way, because we believe that everyone should have the chance to benefit from all that our libraries have to offer!

Visit [www.surreycc.gov.uk/superaccess](http://www.surreycc.gov.uk/superaccess) for further details or pop into Oxted library and ask a member of staff.



# Badger Bathrooms

A family business for over 40 years



Design appointments available for supply only or full installation  
Showroom now at Betsom's Farm, Westerham TN16 2DS

[www.badgerbathrooms.com](http://www.badgerbathrooms.com) 01732 464450

# GLEN DURHAM

Your local, personal and dedicated

# ESTATE AGENT

## Moving home this spring?

### **Maximum Exposure, Optimal Results:**

Enjoy exceptional service, advanced technology, and nationwide marketing and achieve the best outcome for your property sale with me, Glen and The Agency UK.

### **Expert Guidance and Support:**

**As an** experienced agent, I will provide personalised assistance throughout the selling process, ensuring a smooth and successful transaction.

### **Stress-Free Experience:**

Let me handle the complexities of selling your property, allowing you to relax and focus on what matters most to you.

[glen.durham@theagencyuk.com](mailto:glen.durham@theagencyuk.com)

07784 124 888

Property **Sold Properly**

SALES - LETTINGS - PROPERTY MANAGEMENT



—THE—  
**LONDON ROAD**  
FURNITURE COMPANY



*5000 sq ft of beautiful furniture and gifts over 3 floors*

[WWW.LONDONROADFURNITURE.CO.UK](http://WWW.LONDONROADFURNITURE.CO.UK)



**THE LONDON ROAD FURNITURE COMPANY**

LONDON ROAD, HALSTEAD,  
SEVENOAKS, KENT, TN14 7AA

OPEN 6 DAYS A WEEK (CLOSED WEDNESDAYS)

**Tel 01959 533433**







## Local Electrician

Part P Registered

\*

Fully Insured

\*

No job too small

\*

Free Estimates

**07847 395 437**



## DAVID WAITE PROPERTY MAINTENANCE

Private & Commercial

Mob: 07949 307906

Email: djw2261@aol.com

Hedges Cut. Tree Work

Log Cutting & Splitting

18-Ton Log Splitter

& man available

Grass Mowed. Turfing

Overgrown Gardens

Winter Tidy Ups

Patios, Sheds Erected

Fencing Repairs

Brickwork Repairs

Gutters Cleaned & Repaired

Internal Painting

**Fully Insured**



**079 75 79 79 75**

OAKLANDFENCING@GMAIL.COM

- ALL FENCING WORK UNDERTAKEN:
- TIMBER • CONCRETE • METAL • GATES • SHEDS •
  - REPAIRS • DOMESTIC & COMMERCIAL •
  - EMERGENCY ATTENDANCE • FULLY INSURED •
  - FREE ESTIMATES •

THINK FENCING... THINK OAKLAND



## Advertise your Business or Service Here



Looking to reach a local audience? Advertise in our Parish Magazine! Our magazine is distributed to hundreds of households in Tatsfield providing an excellent opportunity to promote your business, event or service.

### What are the benefits of advertising in the Parish Magazine?

<b>Targeted Audience</b>	Reach a dedicated and engaged local readership.
<b>Affordable Rates</b>	Competitive pricing to fit your budget
<b>Community Support</b>	Show your support for the local community and gain loyal customers.

**Contact Us Today!** Email Sarah: [tatsfieldmag@gmail.com](mailto:tatsfieldmag@gmail.com)

*A W Carpentry*  
& general building services

**Telephone**  
**01959 577010**

*Alan Waite*

- Interior & Exterior Carpentry
- Kitchens/Bathrooms fitted
- Renovations/ Alterations
- Guttering & Fascia
- City & Guilds qualified
- Free estimates

Mobile 07984 810966

# SHUTTERS

HARDWOOD - VINYL - FAUXWOOD  
63mm or 76mm or 89mm Louvres  
Clear View, Centre or Offset Tiltrods  
Numerous colour options

# BLINDS



Verticals | Rollers | Venetians | Romans | Curtains | Pleated

FREE Professional design advice on all of our products  
Appointments in the comfort of your own home - at times that suit YOU

For SHUTTER Quotes  
Please Email:  
[info@benasa.net](mailto:info@benasa.net)

**BENASA**  
The difference is in the detail

To discuss your requirements for BLINDS  
Please Call:  
01959 509 179

[www.melsyoga.net](http://www.melsyoga.net)



## CHAIR YOGA

WI HALL - Tatsfield  
TUESDAYS 10 - 11.30AM

Maximising your balance, flexibility and range of movement. Learning ways to relax, destress and find a sense of calm.

tel. Mel on 07977187170

**BLACK OPAL DEVELOPMENTS**

FREE NO OBLIGATION QUOTATIONS

**BLACK OPAL FENCING CONTRACTOR**  
Residential & Commercial

**OUR SERVICES**

- ✓ Domestic & Commercial Fencing
- ✓ High Security Fencing
- ✓ Timber Decking / Composite Decking
- ✓ Gates
- ✓ Garden Clearances

Call Steve on 07763 680 480  
[steven@blackopaldevelopments.com](mailto:steven@blackopaldevelopments.com)

Facebook | Instagram | YouTube



Bringing London training and experience to your doorstep,  
specialising in Residential and Commercial Property transactions.

## Property Enquiries

Nichola Stokoe - [NS@cameronclarkelawyers.com](mailto:NS@cameronclarkelawyers.com)

**020 7018 4000**

**Kent Office** First Floor, Genesis House, 1-2 The Grange, Westerham, Kent, TN16 1AH

**London Office** 25 Eccleston Place, Eccleston Yards, Belgravia, London, SW1W 9NF

[www.cameronclarkelawyers.com](http://www.cameronclarkelawyers.com)



All types of property  
maintenance  
and refurbishment  
works undertaken.  
For an estimate  
please call

**Stuart on  
07802 888774**



# Entre Nous Lingerie

4 London Road, Westerham, TN16 1BD

Entre Nous is a **small independent lingerie** shop, owned by **Jane and Kate**, who have over 18 years of experience.

**Come visit us in Westerham** and let us help you find the perfect fit!

**New linen trousers and shirts** (pictured right) in black/cream or ivory now in stock - *£40 each*



10 – 4 Tuesday to Saturday  
[www.entrenouslingerie.co.uk](http://www.entrenouslingerie.co.uk)  
01959 563975

# NEED ACCOUNTING SERVICES?



DevonshireGreen  
Accounting | Taxation | Wealth Management

## Who we are

**Devonshire Green** is a team of qualified accountants with over 90 years combined experience. With offices in **Westerham & Tatsfield Village**, serving clients in the immediate surrounding areas and nationwide. Our team includes tax accountants, financial advisers and wealth management experts.

## What we do

- Personal tax returns - self-assessment
- Limited company accounts
- Sole trader accounts
- Management accounts
- CIS for contractors & subcontractors
- Payroll
- Tax planning
- VAT returns
- Bookkeeping
- Wealth management

Tel: 020 8464 0493

Email: [admin@devonshiregreen.uk](mailto:admin@devonshiregreen.uk)

1-2 The Grange High Street, Westerham,  
Kent TN16 1AH

 DevonshireGreen  
Accounting | Taxation | Wealth Management

[www.devonshiregreen.uk](http://www.devonshiregreen.uk)



**R. THORPE**

— HEATING & PLUMBING LTD —

**DOMESTIC & COMMERCIAL HEATING ENGINEERS & PLUMBERS**

**Boiler Breakdowns, Repairs and Servicing**  
*(all Makes & Models)*

**Boiler Installations and Replacements**  
*(Interest free finance available)*

**Pay Monthly Service and Repair Packages**

**Domestic and Commercial Central Heating Specialists**

**Underfloor Heating Installations and Servicing**

**Call Rob on 07597 048884    [rob@rthorpeheating.co.uk](mailto:rob@rthorpeheating.co.uk)  
[www.rthorpeheating.co.uk](http://www.rthorpeheating.co.uk)**



# Keeping IT Simple

*Solving all your technical support worries, calmly and patiently  
in your own home, by someone who cares*

- > New Device Setup
- > Instruction & Tuition
- > Cleaning & Cooling
- > Virus & Malware Removal
- > Hardware Upgrades
- > Remote Support
- > Small Business Support
- > WiFi Routers & Networking
- > Cloud Storage
- > Data Backup
- > Data Recovery
- > E-mail Support
- > PCs & Laptops
- > Printers
- > Smartphones
- > Tablets
- > Televisions
- > Wireless Security Cameras



**07375 416 176**

**dan@kisit.co.uk**





# JAYCY

Painting, Decorating

Free estimates

Nick Walsh

01959 577684

Mobile  
07887528264

## Pevs Pampered Paws

Mobile Dog  
Groomer

Frances  
Peverley

07766977416



## BIGGIN HILL PLASTERING



NO JOB TOO  
SMALL FREE  
ESTIMATES

07710622237  
or  
01959540615



**NEW LIFE CHURCH**  
**BIGGIN HILL**

## A CHURCH FOR THE WHOLE COMMUNITY

A local church with an international vision



### EVERY SUNDAY 10am

Join us for worship and Bible teaching  
with youth and kids meetings

### DURING THE WEEK

We also have a youth group on Friday @ 7:30 pm for  
those in school years 7-13 as well as bible study  
groups, friendship groups and hobby-based groups  
for all ages that meet throughout the week.

SCAN ME



GET IN TOUCH

[www.newlifebh.org.uk](http://www.newlifebh.org.uk) | 01959 571 667 | [www.regionsbeyond.net](http://www.regionsbeyond.net)



[newlifebigginhill](https://www.instagram.com/newlifebigginhill)



[www.facebook.com/newlifebh](https://www.facebook.com/newlifebh)



[@newlifechurchbigginhill352](https://twitter.com/newlifechurchbigginhill352)

Part of  
**RegionsBeyond**



# DAVID RUDD AND SON

## COMMERCIAL AND DOMESTIC PLUMBING AND HEATING ENGINEERS

- Full central heating systems and boiler exchanges carried out for GAS, LPG and Oil (Kerosene)
- Installers of Worcester, Valliant and Glow Worm boilers with up to 12 year guarantee
- Kamco Power Flushing
- All types of Plumbing, Heating and Drainage
- Landlord / Home owners Gas Certificates
- Installation and maintenance of Ground Source Pumps, Solar, Under Floor Heating, Cookers and Gas Fires
- Boiler breakdown – Diagnostics and Repairs
- Installation and servicing of Unvented Hot Water Systems
- Full bathroom design and installations

Established since 1973, we pride ourselves on our workmanship

WRAS Approved  
Institute of Plumbing

ACIPHE RP



Tel: 01959 577072

Mob: 07831 641664  
07957 940905

E-mail: [davidruddplumbingandheating@hotmail.com](mailto:davidruddplumbingandheating@hotmail.com)



EST. 1881

# •W•UDEN & SONS•

FAMILY FUNERAL  
DIRECTORS

## BIGGIN HILL

186 Main Road, TN16 3BB

**01959 573130**

24 HOUR SERVICE, 7 DAYS A WEEK

Please compare our **Prices**, our **Service** and our  
**Vehicles**

---

---

Private Chapels of Rest

Prepaid Funerals

---

---

CONTINUING TO BUILD ON THE FAMILY TRADITIONS OF PERSONAL  
AND CARING SERVICE LOCALLY FOR OVER  
140 YEARS

Branches also at Petts Wood, Sidcup, Eltham,  
Bexleyheath, Dulwich and Camberwell



# Mobile Hairdresser & Gel Nail Manicures

Based in Tatsfield  
30 Years Experience

## Kate

tel: 01959 573816

mobile: 07970 012194

Fully Insured

GEL LUX  
PROFES



## Sapphires Dog Walking & Pet Sitting

**Pet Sitting - Dog Walking - Pop Ins  
Dogs, Cats, Chickens & Rodents  
Evening Sits & Long Stays  
Daily Checks - Multiple Week Stays**

**Fully insured - references available  
15 years experience incl. RSPCA**

07917 852415

 Saffsdogwalking



## Mobile Chiropodist

Chiropody undertaken in the  
comfort of your own home



**Mandy Gifford**  
M.Inst.Ch.P., H.P.C. registered

Registered Member of the  
Institute of Chiropody  
and Podiatry

Tel: 01959 540715  
Mob: 07944 763045



Feeling stressed?  
Aching muscles?  
In need of a  
professional  
massage?

*MASSAGE REDUCES STRESS AND  
INCREASES RELAXATION. REDUCING  
PAIN AND MUSCLE  
SORENESS/TENSION. IMPROVES  
CIRCULATION, ENERGY AND  
ALERTNESS. WHILE LOWERING THE  
HEART RATE AND BLOOD PRESSURE.*

Prices start from  
**£30**

(Home visits available)

07702566282 to book your appointment today or visit  
[www.lavenderlushmassage.co.uk](http://www.lavenderlushmassage.co.uk)

# ALEX JONES FUNERAL DIRECTORS

Serving the community since 1996

- OFFERING A CARING AND PERSONAL SERVICE
- BEAUTIFUL CHAPELS OF REST
- HOME VISITS AVAILABLE
- MEMORIAL MASONRY
- PRE-PAID FUNERAL PLANS
- AN INDEPENDENT FAMILY OWNED BUSINESS



## LINGFIELD

1 East Grinstead  
Surrey  
RH7 6EP

Tel: 01342 832 534

## OXTED

92 Station Road East  
Surrey  
RH8 0QA

Tel: 01883 730 383

## FOREST ROW

1 Ashdown Court  
Lewes Road, East Sussex  
RH18 5EZ

Tel: 01342 822 399

## EDENBRIDGE

70 High Street  
Kent  
TN8 5AS

Tel: 01732 860 047

**Golden Charter**   
Smart Planning for Later Life



Alex Jones Funeral Directors Limited is an appointed representative of Golden Charter Limited trading as Golden Charter Funeral Plans which is authorised and regulated by the Financial Conduct Authority (FRN:965279).

GC-LFT 21836 - 1023



## TLC @ HOME

### The Key To Remaining In Your Own Home

Our Private Support at Home Service covers your area and provides support with daily living tasks to enable you to remain in your own home rather than consider residential care. Our service can provide cover during the day, overnight or as a Live-In service. We also offer short term provision to cover illness, respite or discharge from hospital.

We offer a free no obligation chat and information pack.

Call 01959 528539 or Email [tlc4homecare@gmail.com](mailto:tlc4homecare@gmail.com)

### Premium Support Service



**Good Movers**

**Removals & Clearances**

- Removals
- Boxes & Packing
- Storage
- Clearances
- Courier Delivery
- Cleaning
- Probate Service Arranged
- Light Demolition
- Cash Paid for Unwanted Goods

*The best way, the only way, the Good way!*

**0800 024 6183 / 07522 795594**  
[www.goodmovers.co.uk](http://www.goodmovers.co.uk) / [info@goodmovers.co.uk](mailto:info@goodmovers.co.uk)

**PARADISE WITH TARA**

**GENTLE YET EFFECTIVE**

**EXERCISE TO FABULOUS MUSIC**

45 MINS - NO FLOOR WORK

★ **TUESDAYS**  
 4pm  
**TATSFIELD VILLAGE HALL★**

★ Improves **BALANCE, POSTURE & MOBILITY**  
 ★ Improves coordination ★ **Feel good class**  
 ★ Recommended by **Physios**

*Contact Tara*

☎ **07717 797 027**  
**info@upliftstudio.co.uk**



**MUSSELWHITE BUILDERS**

Celebrating **60 Years**  
 In the Building & Plumbing Trades

Musselwhite Builders is a family run building company established 60 years ago. We believe in good, honest service, always maintaining the highest levels of workmanship – it's what's won us our reputation as one of the best building companies in the area.

We carry out a whole range of building work for both residential and commercial customers, including extensions, refurbishment, plumbing, disability access, glazing, brickwork, carpentry, heating and more.

**Plumbing**  
**Heating**  
**Gas Safe**  
**Building & Maintenance**  
**Electrics**  
**Carpentry**  
**Roofing**  
**Refurbishments**

**24 Hour Call Out**

**MusselwhiteBuilders.co.uk**

**07887 517 361**  
**musselwhite.builders@gmail.com**

Musselwhite Builders Ltd  
 80 Craven Road  
 Chelsfield BR6 7RT



## GREENWOOD HORTICULTURE

- Grounds maintenance
- Pressure washing
- Grass cutting
- Garden clearance
- Hedge trimming
- Stump removal
- Tree pruning and removal
- Weed control

**Contact**  
 07944224812  
[Greenwoodhorticulture@gmail.com](mailto:Greenwoodhorticulture@gmail.com)

**Checkatrade.com**  
where reputation matters

## THE WASP GUYS

### Wasp Nest Removal

### 07761 232470

Local  
Friendly  
Trustworthy  
Service



Fully Insured  
100%  
Guaranteed  
7 days a week

**See our Checktrade customer reviews at**  
<https://www.checktrade.com/trades/thewaspguys>  
[www.waspnestsdestroyed.com](http://www.waspnestsdestroyed.com)

## Discover the joy of dance



### Twirl your tutu

All dance styles. All ages.

07850 746189/ 07584 064643  
[www.judithessexschoolofdancing.co.uk](http://www.judithessexschoolofdancing.co.uk)



JUDITH  
ESSEX  
SCHOOL OF  
DANCING



IDTA



ROYAL ACADEMY OF  
DANCE  
REGISTERED TEACHER





# WESTERHAM PLACE

## CARE HOME OF DISTINCTION

A CHARMING VICTORIAN MANOR HOUSE,  
SET WITHIN STUNNING ACCESSIBLE GARDENS.

*"My Mother has never been more settled and happy. I cannot fault the home, the care that it provides or its staff."* Son of a Resident.

Dementia Care | Residential Care | Respite Care

Westerham Place has a passionate team of experts on hand 24/7 to ensure the very best quality of care, support and companionship.



**01959 565805**  
[www.wrenretirement.co.uk](http://www.wrenretirement.co.uk)



\*CQC rating correct as of 26/06/2024.



**Tatsfield**  
**Aquatics**

Proud members of  
**Checkatrade.com**  
Where reputation matters

## Pond Maintenance And Landscaping

- Pond Maintenance
- Pond Design & Construction
- Pond Renovation
- Lake Management
- Garden Makeovers
- Fencing, Paving, Turfing

01959 571 828

ian@tatsfieldaquaticsandlandscaping.co.uk



# MINI CABS

**AIRPORT CARS BIGGIN HILL**

**YOUR LOCAL**

**LICENSED MINI CABS**

**01959 540550**

# Ibbett Mosely

A name you can trust.

Independent Estate Agents - Selling Homes since 1900



## PROFESSIONAL SERVICES

Residential Estate Agency • Residential Lettings  
Property Management • Commercial Agency  
Valuations • Building Design and Layout  
Building Surveying • Town Planning and Development  
Auctions - Furniture, Effects, Antiques and Fine Art

28 Market Square, Westerham, Kent, TN16 1FR  
01959 563265

[westerham@ibbettmosely.co.uk](mailto:westerham@ibbettmosely.co.uk)  
[www.ibbettmosely.co.uk](http://www.ibbettmosely.co.uk)

Offices at

Westerham • Sevenoaks • Otford • Tonbridge • Borough Green • West Malling • London

# Sunningvale Service Station

Sunningvale Avenue, Biggin Hill TN16 3TL

**01959 573434**

We offer a warm welcome and friendly service  
whatever your motoring needs



**Petrol/Diesel**

**MOT**

**Catalysts**

**Bodywork Repairs**

**Diesels**

**Spraying**

**Exhausts**

**Insurance Estimates**

  
**LING & Sons Ltd**  
BUILDING CONTRACTORS

# BUILDING FOR OVER 50 YEARS

New Builds | Renovations | Extensions

  
**CONTACT Information**

 01959 577586

 [info@lingandsons.co.uk](mailto:info@lingandsons.co.uk)






[www.lingandsons.co.uk](http://www.lingandsons.co.uk)

# MR Computing

38 years of combined experience in IT

Local, Professional and Family Owned  
business since 2005

**NO FIX NO FEE & NO CALL OUT CHARGE**

- 
- Punctual visits at an agreed time or collection & drop off service.
  - Apple & Windows computer & tablet/phone support for Business & Home.
  - Reliable wireless range improvement for Home & Business.
  - Most work carried out in a one hour visit. Fixed price workshop repairs.
  - Repairs, speedup and maintenance, Data transfer/recovery, Computer malware/virus removal.
  - New computers supplied/set up and made to feel familiar.



&



**Windows**

**Call Mark  
& Sue on:**

01883 730345

OR

0800 6129534

**Email:**

[office@mrcomputing.net](mailto:office@mrcomputing.net)



Website - [www.mrcomputing.net](http://www.mrcomputing.net)  
Reviews - [mrcomputing.net/reviews](http://mrcomputing.net/reviews)