

www.tatsfield.org.uk

APRIL 2025

£2 One copy FREE to each household

Tatsfield Parish Magazine

30 years
1995-2025

Titsey Place & Gardens

Oxted, Surrey



Come and spend an exciting day exploring our historic manor house and beautiful gardens

Titsey Place, with its stunning garden, lakes, woodland walks, walled kitchen garden and park offering panoramic views, enchants visitors. Enjoy the fine family portraits, furniture, a beautiful collection of porcelain and a marvellous set of four Canaletto pictures of Venice. After touring the house and strolling through the gardens, visitors can enjoy delicious refreshments in our tea rooms.

Open Season: 14 May to 24 Sept 2025

Opening Days: Wed & Sat - All facilities

Sun - Garden & tea room only

Bank Holidays: Open 26 May & 25 Aug 2025

NGS Days: Open 25 May, 29 June, 27 July,
31 Aug 2025

Opening Times: 1pm to 5pm

House Tours: 1.30, 2.30, 3.30pm

Woodland Walks: Open all year round

Info Line: 07889 052461 www.titsey.org



THE bAKERY



bar restaurant & grill

***We have 7 quality En-Suite Letting Bedrooms
with discounted rates for Tatsfield Residents***

Call in for further details or call us on
01959 577605

THE BAKERY RESTAURANT - WESTMORE GREEN - TATSFIELD - KENT - TN16 2AG
Tel 01959 577605 e-mail info@thebakeryrestaurant.com or www.thebakeryrestaurant.com

Sheree's Store & Tearoom



- Specialty Tea and Coffees
- Delicious cakes
- Cream teas
- Hand made cards
- Locally made arts & crafts
- Wide range of products including locally sourced & Fairtrade
- Newspapers & stationery
- PayPoint

Join us in a friendly, relaxed atmosphere in the heart of the village

Tel 01959 928181

2 The Parade
Westmore Green
Tatsfield TN16 2AS

 'Sheree's Store and Tearoom'





Tatsfield Village Club

phone: 01959 577330
email: tvsecretary@btconnect.com
Facebook: Tatsfield Village Club
Instagram: tatsfield_village_club

MONDAYS - BINGO 8PM

TUESDAYS - REGULAR QUIZ NIGHTS 8PM

FRIDAYS - MEAT RAFFLE 7:45PM

SUNDAYS - POKER FOR FUN 7:30PM

HAPPY HOUR 7-11PM TUES

TELEVISED SPORTS FIXTURES

Members & their guests welcome

UPCOMING EVENTS

Monday 5th May - VE day BBQ

Friday 23rd May - Disco

Saturday 7th June - Country & Western evening

Friday 27th June - Disco

Friday 18th July - Josh Harvey/karaoke

Saturday 6th September - Games night

...coming soon Tina Turner act, Kids Halloween party, The Tar Babies and more

Tuition

Lady teacher/tutor with 30 years experience offers one to one tuition.
Coaching to improve confidence and competence. Proven results
References available

- 7-11 years Key Stage 2 Numeracy and Literacy
- Entrance Exam Practice
- 11+ Practice
- Support in English and reading up to Year 9



Mob: 0777 351 7063

Limpsfield, Oxted, Tatsfield and Westerham area


Deige's Helping Hands Home Care Provider

Personal Domiciliary Care

Affordable and flexible care delivered to your own home. We have provided care for the elderly for over 10 years.

We offer a consistent, professional and reliable service.

Flexibility - we will work with you to tailor a care plan that meets your requirements.



Please contact Deige
07981182773

JAYCY

Painting, Decorating

Free estimates

Nick Walsh

01959 577684

Mobile
07887528264

A25 Taxis

Your reliable Tatsfield taxi
Service for all occasions

Airport transfers
Taxi hire
Occasion/Wedding hire
Corporate hire
School run service (DBS checked)

☎ 01959 575957

✉ A25taxis@live.co.uk

The Chartwell Charities

MAKE A BIG DIFFERENCE WITH A MONTHLY GIFT



SCAN HERE
to find out more

Pledging a donation on a regular basis allows us to plan ahead and budget for the long-term, because we know, day in day out, that we have a steady income stream that we can rely on. Be a part of our exclusive community by supporting our work, both now and in the future.



Every gift we receive is committed to improving facilities, funding clinical research and capital projects, enhancing staffing levels, as well as delivering a range of support to young oncology patients and their families in our local communities.

CONTACT: <https://chartwellcancertrust.co.uk/regular-giving/>

info@chartwellcancertrust.co.uk
www.chartwellcancertrust.co.uk

01959 570322

Charity Registration Number: 1109784

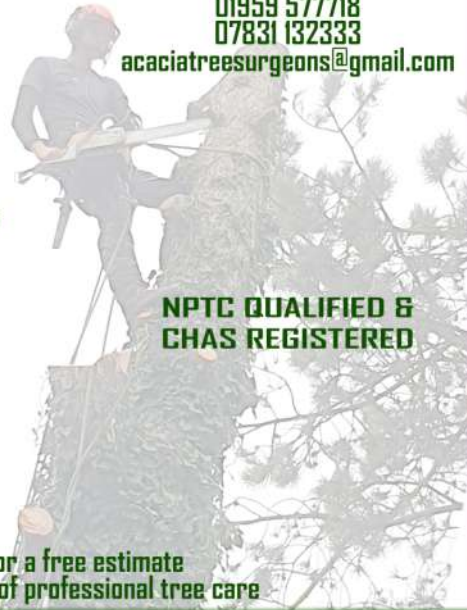


ACACIA TREE SURGEONS

EST.1944

We provide a wide range of tree services
Complete tree and Stump removal
Thinning and Pruning
Crown Reduction
Lifting and Reducing
Site Clearance
24 Hour Emergency Call Out
Chippings delivered
All fencing undertaken.

Based in Tatsfield
01959 577718
07831 132333
acaciatreesurgeons@gmail.com



**NPTC QUALIFIED &
CHAS REGISTERED**

Call us today for a free estimate
Celebrating 75 years of professional tree care

BIGGIN HILL PLASTERING



**NO JOB TOO
SMALL FREE
ESTIMATES**

**07710622237
or
01959540615**



- Community physiotherapy for older people -

Jennifer Willis

BSc (Hons) Physiotherapy MCSP, HCPC

*Fallen recently? Suffer with pain?
Balance and mobility not as good as they used to be? Lost
confidence when moving around?
Suffer from a Stroke, Dementia, PD, MS, frailty?
Feel weaker or fatigued after an episode of COVID-19
..then East Surrey Physio can help*

Jennifer will visit you in your own home, residential home,
or nursing home for your physiotherapy sessions.



07939 461 416

✉ jenniferwillisphysio@yahoo.com

🌐 www.eastsurreyphysio.com



Warlingham - Oxted - Tatsfield - Caterham - Woldingham



Westerham Heights Garden Centre

What We Offer:

- A wide range of plants, shrubs, and trees
- Seasonal flowers to brighten your space
- Expert advice from friendly, local gardeners
- Quality tools, seeds, and soil
- Logs and calor gas
- Fencing

Gift & Homeware Shop

Looking for something unique?

- Step inside our homeware shop to discover:
- gifts for every occasion
 - Stylish decor and one-of-a-kind treasures
 - Locally made and handcrafted items
 - Frenchie paint



01959 571545



westerham.heights@yahoo.com



Main Road, Westerham Hill,
TN16 2HW

Your One-Stop Shop for Garden Gifts,
and Good Vibes



TATSFIELD



01959 577347

Garage Ltd



MOT - Servicing - Repairs on all makes of vehicle.

- Tyres • Batteries • Brakes • Suspension
- Air Con • Clutches • Diagnostics • Welding

Please call Simon or just pop in.

Established since 2014

5-7 Paynesfield Road • Tatsfield • TN16 2AT • tatsfieldgarage@gmail.com



Pre School for children 2+

Tatsfield Village Hall

Funding available for 3 & 4 year olds
and some 2 year olds

Monday to Thursday

New opening times
8:30am ~ 3:20pm

Friday

8:30am ~ 1:00pm

Morning, afternoon and whole day sessions
available

~Clubs included in some sessions ~
Science Club, Boom Arts Academy, Gardening Club & Messy Club

Phone : 01959 540775

Email: office@littlearcornstatsfield.co.uk
www.littlearcornstatsfield.co.uk

Charity number: 1024480



TITSEY
- BREWING CO -

VISIT OUR TAPROOM

with incredible views & delicious beer

OPEN THURSDAY – SUNDAY

for brunch, lunch & dinner

WHAT'S ON?

Quiz Night | 3rd April
Live Music | 10th + 24th April
Beer 'N' Ride | 10th May
Titsey Spring Festival | 17th May

More info + tickets at

www.titseybrewingco.com | [@titseybrewingco](https://twitter.com/titseybrewingco)

Clarks Lane Farm, Tatsfield, TN16 2JU





IQ Wealth Management



INVESTMENTS



PROTECTION



PENSIONS

As a financial advice firm, we provide advice on a wide range of financial matters. From investment advice to retirement planning and managing your estate, we ensure as much as possible goes to the people you want to benefit from your hard work. Our initial 45 minute meeting is free, either at our offices in Tatsfield or your home.

01959 571300

IQ Wealth Management, Aileen McHugo Building, Westmore Green, Tatsfield TN16 2AG

Approver Quilter Financial Limited 15/02/2024

SHUTTERS

HARDWOOD - VINYL - FAUXWOOD
63mm or 76mm or 89mm Louvres
Clear View, Centre or Offset Tiltrods
Numerous colour options



BLINDS



Verticals | Rollers | Venetians | Romans | Curtains | Pleated

FREE Professional design advice on all of our products
Appointments in the comfort of your own home - at times that suit YOU

For SHUTTER Quotes
Please Email:
info@benasa.net

BENASA
The difference is in the detail

To discuss your requirements for BLINDS
Please Call:
01959 509 179



Monkey Puzzle Day Nursery Tatsfield

01959 928 427

Old School, Church Hill, Tatsfield, Surrey TN16 1JX
www.monkeypuzzletatsfield.co.uk

@monkeypuzzletatsfield



- Highly qualified, well-motivated staff
- Beautifully appointed, bright open rooms
- Large outdoor play area
- Open 7:30am-6:30pm, 51 weeks of the year
- We accept 9 month, 2, 3 and 4 year Government funding

CLASSES AT TATSFIELD

EVERY FRIDAY

Boom Arts Academy is an award-winning performing arts school for all levels and ages. Our essence is our energy – we're a positive, empowering place to learn to dance.

Tots street dance: 4.15-4.45pm

Lower Junior street dance 4.45-5.30pm

Boom theatre & Singing 5.30-6.15pm

Junior Street dance 6.15-7.00pm

SCAN THE QR CODE TO BOOK



Boom is known for Street Dance, Singing & Theatre, LAMDA, Contemporary Freestyle, Acro & Tumble, Break Dance, Hip Hop, and Creative Ballet.

We're the only school in South London offering Street Dance and Disco exams with the Imperial Society of Teachers of Dancing (ISTD) – with a 100% pass rate AND 100% Honours.



SATURDAY AND OTHER WEEKDAY CLASSES AVAILABLE AT SANDERSTEAD, SHIRLEY AND KENLEY



info@boomartsacademy.com
WWW.BOOMARTSACADEMY.COM



Hazelwood School

www.hazelwoodschool.co.uk
01883 733841

Dare to
IMAGINE



*Dare to break down the conventions of the everyday
and discover something new.*

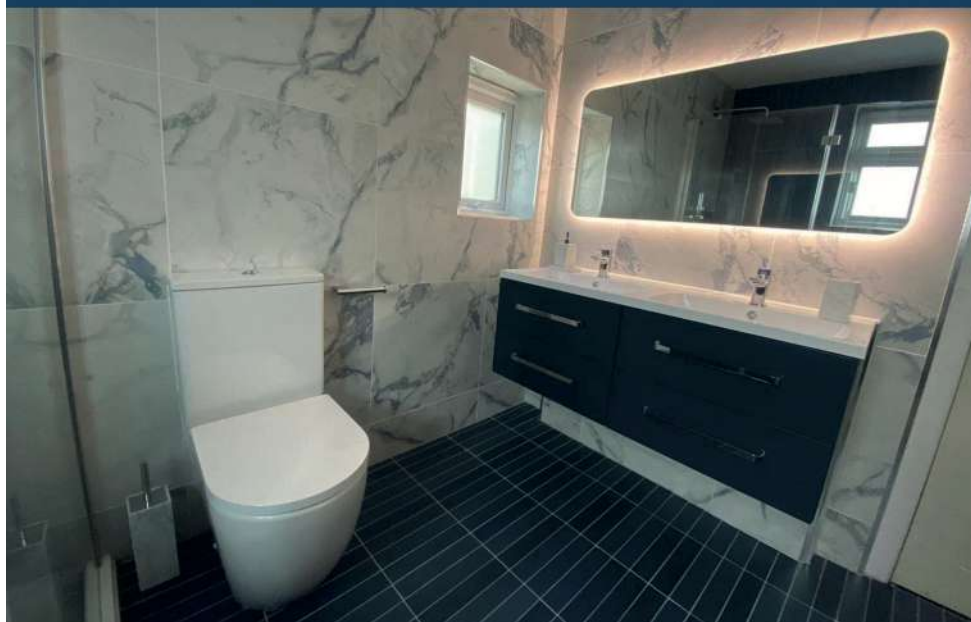
Discover Hazelwood, an exceptional prep school for children aged 9 months to 13 years, nestled in 25 acres of Surrey woodlands, offering one-of-a-kind learning opportunities, state-of-the-art facilities, and boundless possibilities.

Discover more by booking a tour today.
Admissions@hazelwoodschool.com

   @HazelwoodSchool



LILLEY'S BATHROOMS



Start Your Dream Bathroom Today

At Lilley's bathrooms we pride ourselves in providing our customers with a professional service and high levels of expertise with many years design experience. We use quality products from leading, reputable manufacturers. Showcasing a variety of styles, our showrooms provide an abundance of bathroom inspirations, with realistic working bathroom displays.

A free Design Service | Free Measure Up | Free Local Delivery

The use of 4D software Virtual Worlds, where you can "step in" to your space that has been created before the work begins

The Studio

66-70 Footscray Road, Eltham, London SE9 2SU

0208 8507179

The Gallery

157 Main Road, Biggin Hill, Kent TN16 3JR

01959 572000



lilleysbathrooms.co.uk

Tatsfield Aquatics & Reptiles

Tatsfield Aquatics Ltd

Approach Road

Tatsfield

TN16 2JT

01959 571828

Info@tatsfieldaquaticsandreptiles.co.uk

www.tatsfieldaquatics.com

Retail - Landscaping - Maintenance



RST Glass and Glazing Ltd

14 Rosehill Road, Biggin Hill, Kent TN16 3NF

01959 571200

✉ **info@rstglassandglazing.co.uk**

Windows, door & conservatories

Double glazed units

Misted and broken units

Handles, hinges and locks replaced

Glass table tops cut and polished

Patio door wheels/runners

Trade counter

Burglary damage repairs

All insurance work

Contract Glazing



FENSA

APPROVED
WINDOW & DOOR INSTALLER

6 Westmore Road
Tatsfield
TN16 2AX



Gift Certificates
available
for all therapies

Alex Davies
Muscle Therapist
07967 864235
alxdavies@hotmail.com



Lorraine Maddison
McTimoney Chiropractor
07817 548133
rainymad@icloud.com

Other therapies available including reflexology

www.sourcehealthclinic.co.uk



Call Now on 01959 447525

YOUR LOCAL
VIDEO
PRODUCTION
COMPANY

VIDEO

PHOTO

DRONE



**SPECIALISTS IN BUSINESS OVERVIEW VIDEOS, PRODUCT RELEASE,
SERVICES EXPLANATION & VIDEO TESTIMONIALS**

Discover how we can help your ideal, local clients, find you online when they need your service

CONTACT ANDY ON: 01959 447525 | andy@videoevolution.co.uk



Tatsfield Martial Arts

JUDO, JU JITSU & COMBAT FITNESS

Head Coach: Adam Plinston

Judo 6th Dan / Ju Jitsu 4th Dan. UKCC Level 2 Coach

Club coaches are first aid trained, DBS checked and insured via NGBs
Children and adult classes, from age 4+ on Wednesdays, Thursdays,
Fridays & Saturdays

Gain confidence. Learn self-defence. Have fun getting fit!

www.tatsfieldmartialarts.com

07956 956095

tatsfieldmartialarts@gmail.com



Mayfield Riding School



- BHS approved & licensed by Surrey Council
- Adults & children welcome (from age 4)
- Individual and group lessons
- Fully qualified instructors
- BHS training and exams
- Jumping and hacking
- Birthday parties
- Liveries

(01959) 571059

www.mayfieldhorses.co.uk

Private Guitar and Bass Lessons Based in Tatsfield

Experienced tutor with 20+ years experience

Suitable for all ages and abilities

No instrument required, you can use ours!

Learn to play your favourite songs, learn theory or
work towards your grades

Playing music relieves stress, boosts brain power and improves confidence!

Email: Enquiries@mammothmusicacademy.com

Or find us on Facebook



**20% OFF YOUR
FIRST LESSON
WHEN YOU
QUOTE 'TPM'**

ARE YOUR LOCKS BEHAVING BADLY?

A Local Trusted Family Business Since 1989
We Value Old Fashioned Customer Service

Christopher
THE LOCKSMITH

 Specialist in UPVC & Wooden Doors

 No Call Out Charge

 All Work Fully Guaranteed

 No Fix No Fee

 10% Senior Citizen Discount



For More Advice & Help
Call Christopher:

07772 111 222

www.christopherthelocksmith.co.uk



FITNESS CLASSES FOR EVERYONE



This is a 45 minute class which focuses on improving our balance and core strength. We use various pieces of exercise equipment eg. resistance bands, hand weights and more.



This is a 60 minute class which has been described as the strength & conditioning of ballet, and can be distinguished from other group fitness activities by the use of a ballet barre and its incorporation of movements derived by ballet.

CLASSES:

St Christophers Church Hall
Chelsham, CR6 9EQ

Flex with Fi
Wednesday's: 9.30am
Barre with Fi
Friday's: 8.45am

Tatsfield Village Hall
Westmore Green, Tatsfield, TN16 2AG

Barre with Fi
Tuesday's and Thursday's: 6.15pm



For more information:
check out our website www.wellnesswithfi.co.uk
call me 07801 556 069

Produced for the Village by the Parish Magazine Committee under the authority of Tatsfield Church.

Editors • Tara Barry and Tracey Syrett

Chair • Debra Elsdon

Treasurer • Madie Langford (577114) **Distribution Managers** • Jim and Ruth Yeeles (577489)

Advertising Manager • Sarah Tait **Production** • Ruth Yeeles

CHURCH CONTACTS

St Mary's Church Office (Thurs 9.30-13.30)

Admin: Steve Tatler, The Parish Office, High Street, Limpsfield RH8 0DG.

Phone 01883 712512 / email stmoffice.lttm@btinternet.com.

Team Rector: Revd Helen Cook email: hjwcook@yahoo.co.uk

Curate: Debra Elsdon email: curate.lttm@gmail.com

Wardens: Marjory Broughton (01959 541059) / Chris Hancock (01959 577622)

St. Mary's Church Hall Bookings • Sheila Cook (577443)

COUNCIL CONTACTS

Parish Council: Clerk • Aileen McHugo Building, Westmore Green, Tatsfield TN16 2AG
clerk@tatsfieldpc.org.uk (07483 337461)

Chair • Kim Jennings email: kimjennings@tatsfieldpc.org.uk, (577328)

Website • www.tatsfieldpc.org.uk

Tandridge District Councillor • Martin Allen, 38 Paynesfield Rd, Tatsfield TN16 2BG (577201)

Surrey County Councillor • Becky Rush becky.rush@surreycc.gov.uk

OTHER CONTACTS

Village Hall Bookings Secretary • Helena Garcia-Mcleod (bookings@tatsfieldvillagehall.org.uk)

W.I. Hall Bookings • Pat Walsh (01959577684)

Parish Room Bookings • (07483 337461) email clerk@tatsfieldparishcouncil.org.uk

Tatsfield Primary School Head • Rachel Jewitt (577356)

Tatsfield Village Club • (577330)

Furze Corner Sports Pavilion Bookings • (07533 033325)

Doctors • Stock Hill Surgery (580011) • Westerham Surgery (564949) • Oxted Medical Centre (01883 734000)

Village Website: www.tatsfield.org.uk

MAGAZINE CONTRIBUTIONS

We welcome contributions from village organisations and individual residents but reserve all editorial rights. We welcome letters commenting on items in previous issues or on anything else. Anonymous submissions will not be accepted. Organisations must include contact details in their submission, which will be published. Copy date for the Magazine is normally 16th of the preceding month, except for July/Aug and Jan/Feb double issues. Ideally contributions should be sent as a Word attachment in an email to: tatsfieldpm@gmail.com, Alternatively they may be posted to: Tatsfield Parish Magazine, 20 Shipfield Close, Tatsfield TN16 2AU.

Enquiries concerning advertising or loose inserts should be made to Sarah Tait (tatsfieldmag@gmail.com). All loose inserts need to be booked and approved at least ONE MONTH in advance of insertion.

Small Ads These are accepted only from Tatsfield or Titsey residents (No Trade) and are free of charge (Max 10 words plus phone number.) We will include them in the next issue space permitting.

Calendar Dates Our calendar usually covers six weeks or more from publication so please give us your dates in good time. If you don't want your event to clash with others why not check with us early?

Advertisements We take no responsibility for the goods and services advertised in the magazine.

Cover image: "Tatsfield's Daffodils" courtesy of Kate Bamber.

EDITORIAL: LESSONS FROM CATS AND DOGS



I am just back from a week visiting the sites of the seven early Christian settlements in modern day Turkey. It was a wonderful experience which I hope to share more fully sometime later in the year.

As we scrambled over the fallen pillars and cracked pavements of 2000 years ago we met many cats, some dogs, lizards, tortoises – even a peacock! Someone suggested that these cats may be the

ancestors of those that had lived here all that time ago. But then, all cats seem to be born with that look that says, 'I've seen it all'.

Then our guide, Yaman, told us of his first job with a tour group 30 years before. In danger of getting lost, he was led – with placid confidence – from theatre to marketplace to temple to gift shop by a dog that just happened to be lying in the shade of an olive tree. Which made me wonder if there wasn't something to this ancestral memory idea that we had played with.

Some look for guidance in the stars, in cards, in tea leaves; projecting the likelihood of one way being better than the other from past experiences. But perhaps we just need to sit in the shade of a tree, soak up the warmth held in ancient stones to know who we are, where we are from, and



where we are going. Living in the present moment, content.

I do hope that I will see you around the village as the weather warms us up. I particularly hope that you have a chance to visit our ancient church, touch the stones that have stood for so many years, and perhaps sit serenely under a tree.

Blessings to you all, Reverend Debra Elsdon



TATSFIELD ONLINE

Village website: www.tatsfield.org.uk

Village facebook page: search for 'Tatsfield Village' on facebook

Tatsfield Talk facebook group: search for 'Tatsfield Talk' on facebook, and ask to join to be able to view and post. **Twitter:** @tatsfieldtweet

PARISH MAGAZINE EVENTS LISTINGS

If you would like your event included in this diary in future, please send details to tatsfieldpm@gmail.com. Please also let us know if any information has changed.

NEW ADVERTISERS

Our advertising year refreshes in April and we would like to thank our repeat advertisers for their ongoing support and urge readers to browse the adverts when looking for local businesses and services. Don't forget to mention that you saw their advert in the Tatsfield Parish Magazine when contacting the businesses. **We are delighted to welcome the following new advertisers this year:**



Advertising Enquiries We deliver 10 issues a year to over 800 households in the village and the latest copy of the magazine can be found on the village website: www.tatsfield.org.uk where all advertisers are also listed under the 'Businesses' section. We are also able to accommodate ad hoc advertorial pieces, advertisements and distribute A5 flyers with the magazine by arrangement. For further details please email me on tatsfieldmag@gmail.com.

TATSFIELD PARISH MAGAZINE ADVERTISING MANAGER POSITION



Our parish magazine is funded by kind donations and paid advertising from local businesses. We are looking for someone with good organ-isation and computer skills to take on the volunteer role of Advertising Manager. There is plenty of scope to make the role your own.

A fantastic role for someone looking to increase their skill base and to contribute to the Tatsfield community. The Advertising Manager sources and invoices advertisers, manages the advert layout and may occasionally do some advert design.

For more information, please contact Sarah Tait: 07468 589379 or tatsfieldmag@gmail.com

Sarah Tait, Advertising Manager

TATSFIELD PARISH COUNCIL

The Parish Council met on Monday 10th March 2025 at 8pm.

Many of you will have noticed the new trees that mysteriously appeared on Westmore Green. After investigation, it was discovered that the trees had been planted in error by Tandridge Council. We met with the tree officer and have arranged with him to have the trees planted on our main green to be relocated to positions that will not interfere with future events.

Planning

TA/2025/192/NC Gorsey Down Farm, Ricketts Hill Road. Conversion of an agricultural building to single 'larger' dwellinghouse. Application to determine if prior approval is required for a proposed change of use of Buildings on Agricultural Units and former Agricultural Buildings to dwellinghouses (class c), which may include extension of the building and/or building operations reasonably necessary for the conversion. The town and country Planning (General Permitted Development) (England). Order 2015 (as amended)-Schedule 2. Part 3 class Q. **Recommendation:** This is a resubmission of one of two applications that were reviewed last year to convert barns into dwellings on Gorsey Down Farm. We are re-submitting our previous comments and an additional one about minimum ceiling height.

Appeal APP/M3645/W/25/339711 TA/2023/938 The Grasshopper Inn, Westerham Road. Demolition of the existing building and erection of a new 63 bed care home. The Parish Council issued a detailed objection to this application in May 2024 - this is on record with TDC. **Recommendation:** to write to the planning inspector and copy to TDC. Requesting our previous objections be recognised. We also respectfully request that a copy of the adopted Tatsfield Neighbourhood Plan (made 2024) referenced in the decision letter is reviewed by the planning inspector.

Appeal: APP/W2275/W3358947 KCC/SE/0495/2018 (SE/18/3435) Covers Quarry, Westerham. Stabilisation and restoration of Covers Farm Quarry using imported engineering materials to restore the site to grassland, including landscape planting and an ecological receptor area together with a temporary road and ancillary buildings. **Summary:** Tatsfield Parish Council have previously submitted concerns and objections against this long running application mostly on the grounds of local traffic impacts from the large number of trucks carrying fill material. We understand now that Westerham Town Council have applied to be a formal party to the appeal and support them acting in this role.

Finance Two small grants were made to Tatsfield Flower Festival and Citizens Advice Tandridge.

Notified items

Simon Cook reported on investigations into putting EV chargers into the village. He is now looking into private providers and will report back at next meeting.

A request had been received asking for the council's approval for a plaque to commemorate the 50 years of twinning with Vern D'Anjou. All unanimously agreed this was a great idea.

Devolution (Surrey) will now be added to our monthly agenda and we will report when we know how and when the process will progress.

After the sad news that the mother duck from our pond was the victim of a traffic accident, it was decided to place two small signs to warn drivers to take care and watch for ducks crossing.

Events

April 6th 10.30am Annual village Litter pick (details in this magazine)

May 8th VE DAY CELEBRATIONS. We will be taking part in the National Beacon Lighting at 9.30. We are thrilled to announce that Tatsfield Singers will be joining us for the singing of 'I Vow to Thee my Country' and the playing of the National Anthem. The village will be decorated and we have two new Soldiers arriving on Remembrance Triangle. (lots more information in the next issue and on Tatsfield Talk).

Full minutes of our meeting can be found on the Parish Council website.

Meeting dates 2025 14th April; 19th May; 9th June; 14th July; 8th September; 13th October; 10th November; 8th December. All villagers welcome to attend.

Kim Jennings, Tatsfield Parish Council Chairman

Email: kimjennings@tatsfieldpc.org.uk Tel: 07951072326

TATSFIELD VILLAGE LITTER PICK

PLEASE JOIN US ON SUNDAY 6TH APRIL
10.30 AT THE PICNIC AREA WESTMORE GREEN
LITTER PICKERS AND SACKS PROVIDED PLEASE BRING OWN GLOVES

REFRESHMENTS WILL BE AVAILABLE FROM THE FAIRTRADE GROUP TENT.

ORGANISED BY TATSFIELD PARISH COUNCIL





TATSFIELD'S NEIGHBOURHOOD PLAN

You can still view the documents on the neighbourhood plan website: <https://e-voice.org.uk/tatsfieldneighbourhoodplan>

TANDRIDGE DISTRICT COUNCIL

Local Government Reorganisation Since my report last month although we have been doing business as usual, the emphasis has been on the unitary issue, where regular meetings have been held between Districts and Boroughs across Surrey with Surrey County Council. Agreement has now been made not to pursue a single unitary body and work is now being undertaken on two or three unitary bodies to cover Surrey. As I am writing this I have a large report to read that we, as a group of Councils, will be submitting to government by 21st March 2025 as the first part of the submission required. The full plan has to be submitted by 9th May 2025, so a lot of work is still to be done.

There have been discussions with other county districts as to whether they want to make a joint unitary programme that it seems no one was willing to do that. Probably due to the amount of debt the Surrey authorities hold. The government has stated that they expect any forward plan to deal with the debt through reorganisation.

The government suggested unitaries of 500,000 people. Surrey has a population of 1.2 million so two unitaries would include 600,000 people and three unitaries 400,000 each.

Situation at The Square There are issues with parked cars that is making it very hard for the refuse service to get into and out of The Square without driving on to some of the grassed kerb. As a result of some complaints from residents regarding damage to the kerb Biffa were instructed to not drive on the grass verges. The unintended consequence is that Biffa advised that they would no longer access The Square if they couldn't access due to badly parked cars. Please be mindful of how you park especially on bin days. Thank you for your cooperation.

Farming in Tandridge The Independent group, which I lead, did raise a motion at the previous Council meeting in support of our local farmers in line with the increasing numbers of councils across the country that are doing so. The motion was won and Cllr Windsor (Bletchingley & Nutfield) is to be applauded for all of the work she put in to this motion, which was rightly appreciated by all of our local farmers. The evening saw the public gallery full to bursting and multiple tractors parked outside the council offices. So please support your local farms and farmers in every way you can. Thank you.

Biggin Hill Airport Cllr Pinchin and I met Colin Hitchens last week and whilst certain matters have stalled, namely the speed at which complaints are dealt with, others progress well particularly the falling number of over flights.

Planning Together with Cllr Liz Lockwood (Lingfield), I met the Chief Planning Officer and Deputy Chief Executive regarding the upcoming changes to the NPPF introduced by the Government particularly where green belt may be reclassified at grey belt. Whilst I hope

that does not happen in Tatsfield, we must all be aware that the government's plans to build a large number of houses will have an effect on all our thinking going forward.

Potholes I have reported and continue to chase the repair of potholes across the centre of the village and beyond. Do please keep reporting these on the Surrey County Council website.

Other items I continue to work with the council on planning issues, enforcement issues, abuse of yellow lines, blocked drains and building control problems. Please do not fall foul of these - if in doubt ask, it is cheaper that way.

If you think I can help you with anything to do with the Tandridge District Council or anything else please do not hesitate to contact me.

Cllr Martin Allen Tel: 01959 577201 or 07484 185363

Email: cldr.martin.allen@tandridge.gov.uk or martin_allen@talk21.com



CLAIRE COUTINHO MP

As you will have seen in the national and local media, Godstone High Street, the only thoroughfare through Godstone, suffered a major collapse in late February. The situation has since been downgraded from a major incident, and we are now working with Tandridge District Council to help communicate updates to residents and local businesses and feed their concerns to the teams managing the incident. As part of this, we have attended meetings with local residents, local businesses, the Parish Council, Surrey County Council and utility companies. Local businesses were keen to stress that despite the disruption, they are open for business – so please do continue to support them as much as you can.

In other developments, on 27th February the Transport Secretary confirmed that the Government is “minded to approve” the Development Consent Order for Gatwick’s runway expansion. Full Government consent is subject to further information from Gatwick on a number of specific issues. The Transport Secretary has extended the Government’s final decision date to 24th April and the Government will then have until 27th October 2025 to make a decision. We will make sure to publish this when it is announced.

As always, while Claire is on maternity leave our team is working as normal. Please do continue to contact us on claire.coutinho.mp@parliament.uk if there is anything we might be able to help you with.

Team Claire

TATSFIELD VILLAGE HALL

SATURDAY APRIL 26th



Doors 7.00 ~ 7.20 start - ends 9.35

ALL SEATS £8.00

www.curzoncountrycinema.com

PAY AT THE DOOR or RESERVE & PAY ON LINE

CURZON

COUNTRY

CINEMA

TATSFIELD HORTICULTURAL SOCIETY SPRING SHOW

SPRING HAS SPRUNG

Remember to enter your flowers, flower arrangements,
art, crafts, photography and cooked products into the

TATSFIELD HORTICULTURAL SHOW



Saturday 12th April

8:30am for entrants

10:30 the judging

All welcome to visit 3pm.



Delicious home made cakes

A generous raffle

Prizes for the best in class

GIFTS FOR EVERY JUNIOR ENTRANT AND
SUNFLOWER PACKS READY FOR JUNIORS TO TAKE AWAY.

Enter via our website: tatsfieldhorticulturalsociety.weebly.com
or on form in the YEARBOOK by 10th April.

Carol Gaskell

Tel: 07815775859

THS GARDEN CLUB 4th MARCH 2025

Twenty two members attended to hear Bryan Everest's talk on a whole range of subjects and generously gave away to the members a small number of plants that Bryan had already "brought on" from his early planting and plants grown in a "warm" room or closet in the house.

I tried in vain to write down all of the good and useful tips Bryan gave us but there were just too many. Dahlias should be purchased now and planted in the middle of May, he showed and gave away some chrysanthemums, advised how to pinch out fuchsias and geraniums and to cut delphiniums from the core. Double dutch to me but everyone else seemed to know what he was talking about!

We enjoyed tea, coffee and biscuits during the break and Bryan finished up answering some of the members' questions about a whole host of plants.

THS 2025/26 YEAR BOOK The committee is putting together the schedule for these shows so if you have any ideas please forward them to any committee member.

Your local village Preschool, with a personalised experience for every child



Little Acorns Preschool

- Child-led learning
- Free flow provision
- Exciting weekly clubs
- Highly dedicated, experienced staff
- Strong community spirit
- Places available for 2-4 year olds, all funding accepted
- Morning, afternoon or full school day available
- Contact us now to book your visit



Visit our website for more info
www.littleacornstatsfield.co.uk

MONKEY PUZZLE DAY NURSERY



At Monkey Puzzle Tatsfield we have had a fun filled month!



The nursery all took part in Science Week, with lots of amazing activities!

In preschool they made a volcano from recycled materials and then all watched together as it erupted, talking lots about lava, ash and how they erupt etc. Aswell as learning about plants and how they grow.

Babies explored fizzing ice cubes, waterplay – Toddlers had their own science lab for the week!



Of course, we have Easter coming up and the children will be creating lovely cards and crafts.

We also will be taking part in a Easter Bonnet Parade, where the children will all get to make their own Easter hats and then take part in a parade to show off their creations!



Are you looking for childcare?

We offer a high standard of care to children aged 3 months to 5 years old. Providing a range of fun and exciting activities, both indoors and outdoors all year around, exploring our local environment and all it offers on local trips, celebrating all traditions and cultures.

We have spaces available here at Monkey Puzzle Tatsfield, if you are interested and want to book a tour of the nursery, please contact us

Phone - 01959928427

Email – manager@monkeypuzzletatsfield.co.uk

TATSFIELD PRIMARY SCHOOL

The Tatsfield Primary School choir, led by teacher Gemma Ward, joined Tatsfield Singers to participate in the Coulsdon & Purley Festival on Saturday 1st March. The choirs sang three contrasting pieces in four part harmonies and with percussion accompaniments.



Rhythm of the Rain and *Hakuna Matata* got everyone's feet tapping and John Rutter's *For the Beauty of the Earth* was particularly moving. After the adjudicators had heard all of the choirs sing, Tatsfield were awarded honours for their performance! It was wonderful to strengthen community links through music.

Rachel Jewitt, Headteacher

NOT SO YOUNG CLUB

March is always a lovely time when the weather brightens and the days get longer.

Members enjoyed chicken casserole with crusty bread to dip in the delicious gravy cooked by Jackie, and although it was a week late for pancake day we had a pancake cake. Everyone was able to take home a beautifully planted hyacinth too.

We continued our games programme supported Community Investment Fund (supported by Becky Rush) with bingo. Neil was a whizz at calling as the new electronic game meant he did not have a problem dropping his balls! As always a good time was had by all.

To end our meeting we presented a small cake to Pat Stokoe who celebrated her 90th birthday this month. She cannot wait until she gets to 100 so she will get a telegram from the King!

Next month will be our AGM and we will be providing a buffet lunch.

More good news for the club is a grant from the Tandridge community Fund for £300. This we will use to take members to Wisley and another day out.

We have lots to look forward to this year and will keep members busy with events. Don't forget if you know anyone who may like to join us or would like to come along yourself to try out our friendly club please give me a call.

Keep safe,

Sue Dowse, notsoyoung100@gmail.com, 0781611092



**THE TATSFIELD COMMUNITY
COMPOSTING SITE WILL OPEN ON
SATURDAY 5th APRIL FROM 10.00-12.00**



**BRING YOUR GREEN GARDEN WASTE
(WOODY AND TWIGGY BRANCHES, SOFT GREEN MATERIAL AND LAWN MOWINGS)
AND WE WILL TURN THESE INTO 'BLACK GOLD' COMPOST.
NO ROOTS OR SOIL PLEASE!**

**OUR NEW SEASONS 'BLACK GOLD' HAS BEEN SCREENED AND WILL BE
READY FOR YOU TO COME AND COLLECT FOR ONLY £1.50 PER BAG**

**TATSFIELD PARISH COUNCIL ARE TRIALING
A NEW RECYCLING SERVICE FOR THE VILLAGE**

**YOU CAN NOW RECYCLE YOUR:
USED COFFEE PODS AND
EMPTY MEDICINE FOILS**



**RECYCLING BINS CAN BE FOUND
AT THE AILEEN MCHUGO BUILDING
BEHIND THE VILLAGE HALL**

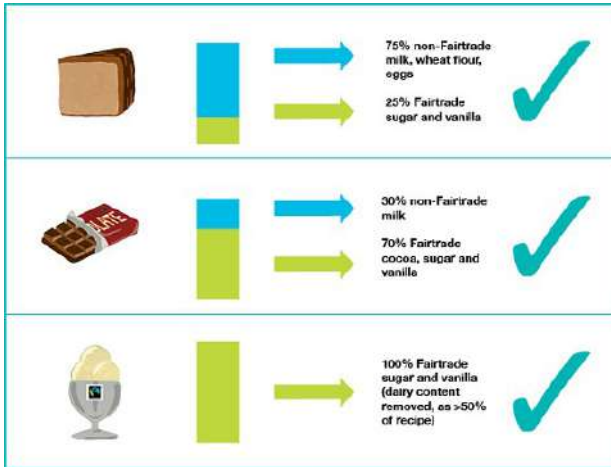
**NOTE: PLEASE ENSURE THEY ARE IN A TIED
RECYCLEABLE BAG WITH NO MEDICINES**

FAIRTRADE ON A BUDGET



The original FAIRTRADE Mark, operates as All That Can Be (ATCB), meaning that all ingredients that can be fairtrade are fairtrade when you purchase a product made of several ingredients. These ingredients are fully traceable from farm to shelf.

For single ingredient products such as bananas and coffee, this must be 100% Fairtrade. For composite products that contain both fairtrade and non-fairtrade ingredients, there are composition rules to reassure consumers about the level of fairtrade ingredients within a particular product. Key points and examples:



- Wherever ingredients can be fairtrade, they should be sourced as fairtrade.
- Food composites must consist of at least 20% fairtrade ingredients.
- Where products contain more than 50% liquid or dairy, the liquid or dairy component should be removed from the percentage calculation.

So, you know a bit about what fairtrade products are

and want to purchase ethically sourced food and drinks, but how can you afford fairtrade on your budget? I've put together a few of my budgeting tips for supporting fairtrade:

1. Are you a tea drinker? One of my joys is coming home from a long day at work, putting the kettle on and having a nice cup of tea. For the past few months, I've used Waitrose original blend teabags costing less than 2p per tea bag, it's in fact cheaper than most other teas.
2. If you're anything like me, you love chocolate. I divide a bar and determine to only eat a few pieces a day. It makes paying the extra for fairtrade chocolate more affordable and everyone healthier to boot!
3. Maybe there's a fairtrade product you really like? If you buy in bulk online, you can get great discounts including BOGOF. What could be better? Try ethicalsuperstore.com
4. Do a bit of pre-shopping research and look for the fairtrade logo on products. There are a lot more fairtrade food and drink items across high street stores than you might think! So when you know what's available, you can make informed shopping choices.

Many of us won't be able to spend loads on fairtrade each week, but if we can make a few changes here and there, we can buy some fairly traded produce regularly and help support the work of fairtrade in ensuring a fair income for farmers in developing countries.

Hilary Schultess-Young, Tatsfield Fairtrade Group

Website:

tatsfieldfairtradevillage.weebly.com

Facebook:

facebook.com/tatsfieldfairtrade

Email: tatsfieldfairtradegroup@gmail.com

Do look out for the Tatsfield Fairtrade Group on Sunday 6 April. We will be serving Fairtrade teas/coffees/hot chocolate on Tatsfield Village Green during the Great British Spring Clean.



OXTED & LIMPSFIELD MUSIC SOCIETY

Saturday 5th April 2025 at 19.30

The Bawtree Hall Hazelwood School Oxted RH8 OQU

The Society is excited to be hosting **Ensemble Augelletti** in a programme drawn from the Baroque Period.

Our five players have been described as of “exquisite sensitivity, a refined tone, infectious enthusiasm and perfect balance.”

PROGRAMME

The Library of a Prussian Princess Anna Amalia
And works by Johann Sebastian Bach
George Frederick Handel and
Arcangelo Corelli

Tickets are £30 (with free entry for those under 25).
Either on the door or by way of our website at www.olms.org.uk



ST MARY'S MATTERS

Our main Sunday service with music is at 10am led by visiting clergy / lay people including our Curate Revd Debra Elsdon. All are welcome. Further information is in our Notice Sheet which can be accessed via the link on the home page of our website: www.lttm.org.uk/stmarys. Services for Holy Week and Easter follow these pages.

ST MARY'S CHURCH ELECTORAL ROLL 2025-26

The Church Electoral Roll is your parish church's register of electors. It is the list of those entitled to attend and to vote at the Annual Parochial Church Meeting where the elections take place for:

- (a) the parochial church council;
- (b) the parish representatives on the deanery synod.

Any person entitled to attend the Annual Parochial Church Meeting may raise any question of parochial or general church interest. Preparation for a new Electoral Roll will take place from Sunday 30th March to Saturday 12th April 2025. Under the Church Representation Rules any persons are entitled to have their names entered on the roll if they:

- are baptised and aged 16 or over;
- have signed a form of application for enrolment; and, either:
 - ◆ are members of the Church of England or of any Church in communion with the Church of England being resident in the parish or (not being resident in the parish) having habitually attended public worship in the parish during the six months prior to the application for enrolment; or:
 - ◆ are members in good standing of a Church (not in communion with the Church of England) which subscribes to the doctrine of the Holy Trinity declaring themselves also to be members of the Church of England and having habitually attended public worship in the parish during the period of six months prior to enrolment.

If you wish to be considered for the Electoral Roll, please obtain a form from Chris Hancock (01959 577622), or from the Church Narthex. Please return completed forms by Saturday 12th April 2025 to:

Chris Hancock (Electoral Roll Officer), 12 Shipfield Close, Tatsfield

ST MARY'S CHURCH ANNUAL MEETING OF PARISHIONERS, SUNDAY 27TH APRIL 12.30PM

This will be held in the Millennium Hall followed by our Annual Parochial Church Meeting (APCM). Anyone resident in the Parish whose name is entered on a register of local government electors, as well as anyone whose name is on the Electoral Roll, is entitled to attend the Annual Meeting of Parishioners at which the Churchwardens are elected. All Lay persons whose names are on the Electoral Roll (see above) are entitled to attend the Annual Parochial Church Meeting and take part.

LENTEN FRIENDSHIP LUNCHES 2025 IN THE MILLENNIUM HALL, SATURDAY 5TH AND SATURDAY 12TH APRIL, 12 NOON – 2PM These are a great opportunity to come together in a warm and welcoming setting to catch up with old friends and make new ones, whilst enjoy a Ploughman's Lunch with homemade soup for a suggested donation of £3. There is no charge for children of primary school age and there will be free all age Easter crafts and a challenge to decorate a real egg for our Easter Tree. Proceeds go to the Bishop of Southwark's Lent Call supporting projects helping the young recover from trauma and encouraging their mental wellbeing. Booking is not required.

FOOD DELIVERIES We support the local community at Westerham foodbank, which has seen an increase in households referred from a variety of agencies, alongside fewer donations, meaning they continue to need our help. Some require short-term support, some intermittently over a longer time and some for extended periods. We delivered on 13th March and will again on Thursday 17th April. Items currently needed include: cereal, soup, baked beans, jam, pasta sauces, rice, tinned fish, meat, long-life or powdered milk, custard and rice pudding. Please donate if you can. Non-perishable food donations can be left in the Narthex at St Mary's church, opening times above. Monetary donations will be used to purchase more food. Thank you for your continued support.

Hilary Vale 01959 577864

CHURCHYARD TEAM Our first maintenance session of the year took place on 1st March. Our volunteers tidied up branches, twigs and leaves which had fallen since our last session in November. Then on to further clearance of undergrowth and removal of low hanging branches on the yew near the lych-gate, which has enabled more daylight to allow the hedge to thicken and grass and wildflowers to flourish. We also had a bonfire for all the branches and debris which has accumulated since last Autumn. Our next session will be on Saturday 5th April at 10am. **David Gulley**

ST MARY'S CHURCH OPENING TIMES Our pretty church is open for viewing, prayer or personal reflection from 9am - 3.30pm approx on Tuesdays, Wednesdays, Thursdays, Saturdays and Sundays.

CONTACTS

St Mary's Church Office: The Parish Office, High Street, Limpsfield RH8 0DG.

Phone :01883 712512 Email: stmoffice.lttm@btinternet.com

Open Thurs 9.30-13.30 - emails are checked regularly for urgent matters.

Team Rector: Revd Helen Cook 07530 609511

Email: hjwcook@yahoo.co.uk (day off Friday)

Curate: Revd Debra Elsdon 07436 172130

Email: curate.lttm@gmail.com (days off Mon & Fri)

Parish Administrator: Steve Tatler - Church Office Thurs 9.30 -13.30 (details above)

Wardens: Marjory Broughton (01959 541059) / Chris Hancock (01959 577622)

St Mary's Website: www.lttm.org.uk/stmarys



LIMPSFIELD AND TATSFIELD TEAM

HOLY WEEK & EASTER SERVICES

Palm Sunday, 13 April

Marking the moment when Jesus entered Jerusalem

10.00 am Service - St Peter's (meet 9.45am at
The Bull car park for Palm Sunday procession)

10.00 am Service - St Mary's

10.00am Service - St Andrew's

Maundy Thursday, 17 April

*A quiet service in which we reflect on our love and
service for each other in the symbolic washing of feet*

8.00 pm Eucharist at St Peter's

Good Friday, 18 April

*Services and open space give
opportunities for quiet contemplation*

10.00 am Service - St Andrew's

12.00 pm - Walk of Witness in Oxted
(meet at the Council Offices,
Gresham Road)

2.00 pm Service - St Peter's

All Day - Prayer & Reflection
resources available - St Mary's

Saturday 19 April

*A service held outside symbolizing
the light and fire of the love and life
of Christ to end the darkness*

7.00pm Service of the Light /
Easter Fire - St Mary's

Easter Sunday, 20 April

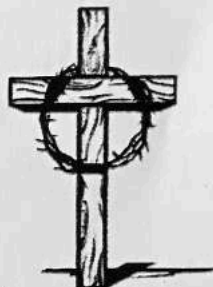
*Each of the churches in the Team will
be full of colour and flowers on this
joyous morning*

10.00 am Eucharist - St Peter's

10.00 am Eucharist - St Mary's

10.00 am Eucharist - St Andrew's

You are invited you to
join us for any of our
Holy Week at Easter
services in our team
churches.



REGULAR TATSFIELD EVENTS AND INFORMATION

Sun	9.30 am	Yoga with Lexy, VH
	10.00 am	Church service – StM
Mon	9.30 am	Tots on Top – CH
	9.30 am	Shape and Tone with Gary - WIH
	1.30 pm	Bridge Club – WIH
	6.30 pm	Cubs - SH
	7.00 pm	Art Group – VH [Term time]
	8.15 pm	Bingo – TVC
Tue	1.00 pm	Not So Young Club (2 nd Tuesday of the month) WIH
	2.30 pm	WI Meeting (1 st Tuesday of the month) WIH
	4.00pm	Paracise VH
	7.00 pm	Scouts and Explorers – SH
	6.15 pm	Barré with Fi - VH
Wed	10.30 am	WI Pop In – WIH
	2-4 pm	Composting Site OPEN from 5 th April
	6.00 pm	Shape and Tone with Gary – WIH
	6.00pm	Over 8s Jujitsu, SH
	7.30pm	Adults Jujitsu, SH
	7.30 pm	Yoga – VH
	Thu	9.30 am
9.30 am		Shape and Tone with Gary, WIH
2.00 pm		Scrabble at AMB (2 nd Thursday of the month)
1.30 pm		Hear Here Sessions – AMB (1 st Thursday of the month)
6.00 pm		Over 8s Judo – SH
6.15pm		Barré with Fi, VH
7.30 pm		Adults (14+) Judo - SH
7.30 pm		Tatsfield Singers - TPS
8.00 pm		Table Tennis – VH
Fri	9.30 am	Combat Fitness - SH
	1.30 pm	Short Mat Bowls –VH
	4.15pm	Boom Arts Academy Tots Street Dance – VH
	4.45pm	Boom Arts Academy Lower Junior Street Dance – VH
	5.30pm	Boom Arts Academy Theatre and Singing – VH
	6.15pm	Boom Arts Academy Junior Street Dance – VH
	8.00 pm	Badminton Club – VH
Sat	9.00 am	Under 8s Judo – SH
	10.00am- 12pm	Composting Site OPEN
	10.15 am	Over 8s Judo - SH

Venues: AMB - Aileen McHugo Building • CGA - Community Games Area • MH - Millennium Hall • SH - Scout Hut • StM - St. Mary's Church • TACG – Tatsfield Allotments and Community Garden • TVC - Tatsfield Village Club • TPS - Tatsfield Primary School • VH - Village Hall • WIH - Women's Institute

UPCOMING EVENTS – VILLAGE AND BEYOND

APRIL

2 nd Wed	7.45pm	Now That's What I Call Rodgers and Hammerstein, Barn Theatre
3 rd Thu	7.45pm	Now That's What I Call Rodgers and Hammerstein, Barn Theatre
4 th Fri	7.45pm	Now That's What I Call Rodgers and Hammerstein, Barn Theatre
5 th Sat	10.00am	Churchyard Tidy Up, StM
5 th Sat	12.00pm	Lenten Friendship Lunch, MH
5 th Sat	2.30pm	Now That's What I Call Rodgers and Hammerstein, Barn Theatre
5 th Sat	7.30pm	Ensemble Augelletti, OLMS Concert, Hazelwood School
5 th Sat	7.45pm	Now That's What I Call Rodgers and Hammerstein, Barn Theatre
6 th Sun	10.30am	Great British Spring Clean, Village Litterpick, Westmore Green
6 th Sun	10.30am	Fairtrade Teas and Coffees, Westmore Green
12 th Sat	12.00pm	Lenten Friendship Lunch, MH
12 th Sat	3.00pm	THS Spring Show, VH
13 th Sun	10.00am	Palm Sunday Service, StM
17 th Thu	8.00pm	Maunday Thursday Eucharist, St Peter's Church
18 th Fri	12.00pm	Walk of Witness, Council Offices, Gresham Road, Oxted
19 th Sat	1.30pm	Ever After – Fairytale Singalong, Barn Theatre
19 th Sat	7.00pm	Service of the Light/Easter Fire, StM
20 th Sun	10.00am	Easter Sunday Eucharist, StM
22 nd Tue	7.30pm	LCA MT Seniors – Rock of Ages Teen Edition, Barn Theatre
24 th Thu	7.30pm	LCA MT Juniors – Finding Nemo JR The Musical, Barn Theatre
25 th Fri	7.30pm	Gh Management – Classic Rock Revival, Barn Theatre
26 th Sat	7.00pm	“Conclave”, Curzon Cinema, VH
26 th Sat	7.45pm	Not the Rolling Stones, Barn Theatre
30 th Wed	7.30pm	Gaudi – Master Builder of Barcelona, Limpsfield Church Hall

MAY

4 th Sun	11.30am	Tatsfield Art Group Exhibition, VH
5 th Mon	11.30am	Tatsfield Art Group Exhibition, VH
8 th Thu	tbc	VE Day Celebration, Beacon Lighting, Bakery Lawn
10 th Sat	7.30pm	Haru Ushigusa plays for North Downs Sinfonia Concert, VH
11 th Sun	1.00pm	Tatsfield ClubFest and Volunteer Awards, Westmore Green
23 rd Fri	7.45pm	The Roy Orbison Experience, Barn Theatre
28 th Wed	7.30pm	The Art of Stained Glass, Limpsfield Church Hall
30 th Fri	7.45pm	Truly Collins (Music of Phil Collins and Genesis), Barn Theatre
31 st Sat	7.30pm	OLMS Jazz Evening, Pat Davey's Acrobat Trio, Hazelwood School

JUNE

7 th Sat	7.30pm	Oxted Comedy Night, Barn Theatre
13 th Fri	7.30pm	Carlton Kirby's True Tales of the Tour de France, Barn Theatre
14 th Sat	7.45pm	Bruce Juice (Springsteen Tribute), Barn Theatre
20 th Fri	7.45pm	Dead on Cue by Giles Shenton Productions, Barn Theatre

TATSFIELD WI CELEBRATING OUR 100TH BIRTHDAY 1925-2025



It was Cheers and Congratulations at our Party on 4th March.

Tatsfield WI in West Kent Federation may be one of the smaller institutes but it is really big in friendship and support. It has also been at the heart of our village for 100 years and we are proud to be front and centre at each and every village event.

We held a party for members and guests, complete with banners,

bunting and balloons. Needless to say the afternoon tea and birthday cake were enjoyed by all. Our party was full of laughter and happy memories with good friends.

Many of us have shared the joys, sadness, trials, and celebrations of life for a very long time. Other members have been welcomed into this caring circle in more recent years. We are always open to new ideas and new members. If there is a group of younger women in the village who would like to start meeting up and developing their own style, we will do everything we can to support them. Give me a call and we can discuss how to go forward.

Don't forget, everyone is invited to come along for a cup of coffee or tea and a friendly chat every Wednesday morning between **10.30 and 12** in the WI Hall in Paynesfield Road. Apart from a short break over Christmas week, our Pop In runs every Wednesday and has done so for many years, hosted by a small rota of WI volunteers. A great way to meet other village residents – all ages welcome. So if you are passing, Pop In.

I would also like to remind you that our Hall is a local, cosy, warm venue for a meeting, family party or celebration just give us a call on 01959 577684. **Susan Smale 01959 577660**



TATSFIELD 100 CLUB

Congratulations to the winners of the Tatsfield PFA 100 Club for February 2025:

1 st Prize	Matthew Perrett	£45.00
2 nd Prize	Margaret Burton	£30.00
3 rd Prize	Craif Seamons	£15.00

Thank you for supporting sport in Tatsfield. If you know of anyone who wishes to join the 100 Club (for a modest £6 per month), or if you would like additional numbers, then please contact me at leames200@gmail.com.

Les Eames

TATSFIELD MARTIAL ARTS – QTR 1 UPDATE

Happy Birthday to us! We hit a major milestone on 6th January when the club turned ten. It's crazy to look back on that time and think about how many people, many village residents, have been through our doors and trained with us. We started with six members on our first night - we currently have 103. To mark this occasion, the club is throwing a 10th birthday party on Saturday 19th July at The Ship. All current and past club members and their families are invited, basically anyone who has helped grow the club over the last ten years – so if that's you, make a note of the date now! We will have use of the pub from 6pm, the kitchen will remain open and there will be a DJ playing some tunes.



British Championships 2024

The British Championship is the pinnacle of competitive domestic judo. At his first time at this event and in a massive group of 34 boys, Kayden Plinston reached the semi-final of his pool, narrowly missing out on reaching the medal contests. There are no easy fights at this level and with two wins from four contests, he did himself and the club proud.

Surrey Judo Black Belt Grading

In my role as Chair for Surrey Judo and as a Senior Examiner for the British Judo Association), I ran a national black belt grading at Croydon

Judo Club on Saturday 18th January. Several club members attended.

Both Aaron Mumford and Tom Carlisle gained 40 points towards their 2nd Dan black belts, through some great judo on the day. Both won four fights each against other black belts.

Our brown belts were also in action, Alastair Durkin gained another 20 points towards his 1st Dan black belt, and Harvey Davy gained another ten points.

Southern England Regional Schools Championship On Saturday 19th January, the Regional Schools Championship was held at Woking Leisure Centre. A popular competition with over 250 entries.

In the year 6 & 7 heavyweight boys, Morgan Baker took the gold medal with four wins from four contests. Harvey Davy took gold in years 10 & 11 u74kg boys but had to fight up an age category with the year 12 & 13 boys due to low numbers. Unfortunately he dislocated his shoulder from landing heavily on it - but the good news is that he is already

back on the mats training! In the year 12 & 13 u66kg, Kayden Plinston defended his title and won gold for the second year in a row, he also picked up ten points towards his 2nd Dan black belt.

Surrey Open 2025 On Sunday 2nd February, Surrey Judo ran the first Surrey Open competition of the year at Donyngs Sport Centre in Redhill. The event was for minors & pre-cadets (so under-14s) and also for seniors, but not black belt grades. It was well attended and, in fact, we sold out weeks before the closing date.

In the minors & pre-cadet event we had three children competing. Jane Mullings picked up a gold medal despite having to competing in a higher weight group. Both Teddy Carlisle and Maude Stoke won bronze medals, which was really pleasing as it was their first time at a judo competition. In the seniors event, David Flood fought bravely but was unable to pick up a medal, not helped by the fact that being in his late fifties, he was giving away a good 35+ years to everyone else!

On the officiating side, Edie Plinston finished her training and qualified as a BJA Scorer and Timekeeper, and I passed the final assessment to qualify as a BJA National Referee.

English Open Championship 2025 This is the top competition of the year for England Judo and a national ranking event. This year it was held on 22nd and 23rd March at Wolverhampton University.

Kayden Plinston was competing in the cadet (U18s) u66kg weight category and as in the British Championship he was in a huge group of 29 fighters. Kayden won his first fight easily, submitting his opponent with a choke. In his second fight, he was up against a GB squad member but wasn't fazed and beat him with a massive throw. In his third fight, he was competing against the current 5th ranked player in the country and the bronze medallist from the Scottish Open - but Kayden won the fight convincingly. He then found himself up against the number three in the country in the semi-final contest. Despite his best efforts Kayden was beaten, so missed out on the final. In his contest for the bronze medal, he faced the 8th GB ranked player. The fight was extremely close, but with 40 seconds left to go Kayden was caught with a throw which gave his opponent a yuko score (the lowest score possible in judo) and with so little time left, Kayden was unable to turn this around. So, he had to settle for 5th place.

Reaching a semi-final of a national ranking event and to then miss out on a medal is a bitter pill to swallow - but experiences like this make you stronger. Following this performance, Kayden has now been ranked 11th in Great Britain. The only way is up!

British National School Championship 2025 On Saturday 8th & Sunday 9th March at the Institute of Sport in Sheffield, the National Schools Championship took place. This is a national level competition where you represent your school rather than judo club (it is still the clubs that support the competitors on the day).

Following their gold medals in the Southern Area Schools Championship back in January, we had Morgan Baker competing in the +55kg boys years 6 & 7 and Kayden Plinston in

the u66kg years 12 & 13. Unfortunately, a disappointing day for Kayden as he was unable to progress to a medal contest after losing his third round contest. However, Morgan won all his contests with big ippon scoring throws to win his group and be crowned British Schools Champion!

England Selection After winning the bronze medal at the English Closed Championship in October 2024, Kayden was selected for the England Development Squad (EDS) and has been training with the squad regularly. Excitingly, he has been selected to travel with a small team to complete and represent England in the Antwerp Open in Belgium – his first taste of international competition!

NORTH DOWNS SINFONIA ‘THE FAMOUS AND THE FORGOTTEN’

Bruch’s Violin Concerto No.1 was his best known and best loved work. However, he wrote two other violin concertos which he considered to be at least as good as the first. He wrote “Every fortnight another violinist comes to me wanting to play the first concerto. I have now become rude and tell them, did I perhaps write just this one? Go away and once and for all play the other concertos, which are just as good if not better.” Despite this, the First Violin Concerto has retained its popularity, and is considered to be at the very peak of all violin concerti. North Downs Sinfonia will be playing this with the astonishingly talented Haru Ushigusa as soloist. Haru, our favourite violinist, has played with us several times before, most recently in November 2023 when she played the Tchaikovsky Violin Concerto to great acclaim.

The concert will be starting with Schubert’s ‘Overture in an Italian Style’, and the second half will be Mendelssohn’s Symphony No 8, the so-called ‘Lost’ symphony, which is of course the ‘Forgotten’ part of the concert. He first composed this at the tender age of thirteen as a purely string symphony, but later added wind and timpani. It is typical Mendelssohn, being very melodic, despite being originally composed when he was so young.

The concert will be conducted by Ben Knowles, who has conducted NDS on several occasions before.

As usual, the concert will be in the Village Hall at 7.30pm, on Saturday 10th May. Tickets will be available from Sheree’s nearer the date of the concert, and will also be available to book by phoning 01959 577659, or by emailing northdownssinfonia@gmail.com.

It has been six years since we increased our prices, but unfortunately rising costs have forced us to do so for this concert. Tickets will be £13, with concessions £10, but each ticket will now include a programme, which we currently sell separately.

Peter Maynard

TATSFIELD SINGERS

SUCCESS AT THE COULSDON & PURLEY MUSIC FESTIVAL

Tatsfield Singers & Tatsfield Primary School joined together, for the first time, to sing at the Coulsdon & Purley Music Festival. They entered the category for 'Mixed Choir – Children & Adults' and achieved great success in coming 1st and being awarded an Honours Certificate. The choir sang three songs – Rhythm of the Rain, Look at the World and finished with a lively rendition of Hakuna Matata from The Lion King.



The Adjudicator commented, "it was very special seeing adults and children equally singing their hearts out. One of the few occasions where each

voice and age has equal important and responsibility in achieving the outcome of a great performance – well done!"

This is the first time that the Singers have joined with the Tatsfield School Choir and Rachel Jewitt, Headteacher, who also accompanied the choirs said, "I thought our choirs created a really warm sound and the love of music shone through".

Sarah Fryer, Tatsfield Singers Musical Director, said "I was very pleased with the performances and very proud to stand in front of you all and we look forward to joining with Tatsfield School choir in the future".



THE TATSFIELD GARDENER IN APRIL

After such a wet and dull winter, March in contrast was largely dry with some warm sunny spells by day and cold by night, more like April. So what will April be like? Our heavy soil is drying and warming up, but remember it is only April, we could yet have chilly winds and some frost so be patient when planning your sowing and planting.



Every year I look forward to the new seasons crop of rhubarb. I am often asked, is rhubarb a fruit or a vegetable? Well it is both! Strictly speaking it is a vegetable, but in the culinary world it is treated as a fruit. Rhubarb is an ancient plant grown for its medicinal properties, it spread quickly throughout the world and soon became a familiar crop in UK gardens. The demand for rhubarb was such that the

season was extended by covering the dormant plant (crown) – putting it in the dark – and forcing it into growth forming thinner, paler, stems with a milder flavour. Plants grown in this way are then left for the rest of the season to recover and be ready to produce a crop the following year. Maincrop stems are thicker and, in my opinion, have a much better flavour. You can grow rhubarb in a big pot or tub, in the border or on your veg patch. A great deal of work has been done by growers to produce improved varieties such as 'Timperley Early', 'Valentine', 'Raspberry Red' and many others; be careful when thinking about accepting a crown or root from a friend, it may contain Crown Rot or one of several virus diseases.

Rhubarb is a hungry plant needing a soil with plenty of composted green waste (**our Tatsfield Community Compost site is open on Wednesdays 2pm – 4pm, and Saturdays 10am– 2pm from 5th April!**) added into the soil when planting and a thick mulch (4-6”) around the planted crown; it also needs plenty of moisture during the growing season. To ensure continuity of quality stems, pull the stems regularly, with a slight twist, and never let your rhubarb flower!

There are a number of chemical products now available that will greatly improve the appearance of hard surfaces by killing moss, algae and lichens and then using a pressure washer to rinse it all away. If you are thinking of doing this there are a couple of things to bear in mind. Be sure to read the product label to check whether the chemical is safe to use around plants. Using a pressure washer near to plants can do a lot of damage, this is especially true for young emerging green foliage.

Jon Allbutt

WILDLIFE GARDENING TIPS FOR APRIL

Yay! Spring is here and No-mow May is just a few weeks away. No-mow May has become very popular and can be very creative, but the reason it is so necessary to wildlife is that Britain has lost approximately **97%** of flower-rich meadows since the 1930s and with them gone are essential foods needed by pollinators such as bees and butterflies. This disruption to the food chain creates mayhem for all our natural fauna, and No-mow May is a great way to give our wild things a chance to thrive and survive. So please do give it a go, and take it easy with the lawn mower for a month or so.

Which leads me to dandelions... these cheerful little plants support more than fifty different species of insects including oodles of bees and moths. Many of these insects are essential pollinators, and many are food for the birds, so dandelions play a vital role in the wildlife food chain. But let's face it, dandelions can be a real pain in the backside as far as lawn maintenance is concerned, and left unchecked, they can overrun and ruin your lawn (one plant can produce 12,000 seeds per year!). This wouldn't happen in the wild because dandelions are so tasty, they'd be quickly scooped up by the local herbivores, but as I don't keep rabbits, goats, sheep or ponies, it's a bit of a puzzle as to how to control them without harming the wildlife. Pesticides (AKA lawn treatments) are a complete no-no because it seems bonkers to squirt poison around the place, hence I have come up with a cunning plan to deal with these little yellow critters without collateral damage, though I should point out that I am no horticulturist, but it does work for me. Dandelions do most of their flowering in May and June, so in the spirit of No-mow May, I leave the dandelions to flower to provide a much-needed burst of pollen and nectar. But from June onwards, if I see a downy fluffy seed head, it goes straight in a lidded compost bin. And if I can get out gardening when the ground is a bit damp, I'll use a hand weeder to whip some of the plants up, root and all, though I leave a few in situ as the leaves are a good winter food source for the birds.



Interesting fact of the month...Dandelions have been used by humans for food and medicine for much of recorded history dating back to the ancient Egyptians, Greeks, and Romans. And they were so popular with Europeans that dandelion seeds were taken to America on the Mayflower in 1620 for cultivation as an agricultural crop.

BTW, the name dandelion comes from the French '*dent de lion*', meaning lion's teeth after the shape of their jagged-toothed leaves.

Jim Kenney

Tatsfield
**CLUBS
FEST**
&
VOLUNTEER AWARDS
2023

**Sunday 11th May
Westmore Green**

JOIN US!

**BRING A PICNIC
TALK TO CLUBS
WATCH DISPLAYS**

**PICK UP SOME BARGAIN
PLANTS
ENJOY AN ICE-CREAM**

FULL PROGRAMME IN NEXT MONTH'S MAGAZINE

NIGEL'S NATURE NOTES

In poll position this month is Martin Allen with his regular update (08.01.25):

*'Just got round to your December 2024 Nature Notes and the long, long list from the gardens at Furze Corner. Very impressive. I can understand why they get lost in the moments. These days I do not get too hopeful of seeing Siskin, Brambling and Redwings, which we have in the past. Our pleasure at the moment is more down to earth with the welcome return of the **Song Thrush**, a **Chaffinch** and a couple of **Goldfinches**; all very welcome. Oh, and of course the perpetual flight of the **Robin** guarding his territory against our flock of **sparrows** which, although smaller than a few months ago, is thriving.'*

Thanks for this, Martin. Your contribution is appreciated, as always. I'm glad you mentioned the Song Thrush. We've had one in our locality singing its heart out for hours on end, day after day for the past few weeks. As the crow flies, you're not too far away from us so we are probably sharing the same experience. Hopefully, the songster's effort will prove worthwhile and a mate will be found. But, I wonder when anyone last saw more than one thrush at any one time?

Ruth and Jim (Yeeles) have been out and about during these early months of 2025 and are already sending us remarkable reports (28.02.25 / 02.03.25):

*'I still haven't seen my first Brimstone. It looked quite promising weather yesterday when we were at Hill Park, but instead we had a wonderful view of a **Barn Owl** hunting!! () It was about 4:30 in the afternoon, so we were surprised when walking at Hill Park yesterday, when we saw it hunting at about 3:00! I'm sure there's a good chance of it being out again if you were to have a wander over there. We've seen it in all three fields of Ten Acres, so anywhere along the main path should be good.'*

(04.03.25) *'We're over at Hill Park again doing some hedge laying... and we've just seen our first **Brimstone!!**'*

Brimstone Spotting Champions yet again! How many years is that? I've lost count. Anyway – congratulations to you both! And thanks for the Barn Owl video and photo. [See next month's issue.] I had no idea that they were on the wing so early in the afternoon. I've never seen one out hunting so I really must try to get over to Hill Park during one of these spells of good weather. Many thanks for your messages.

It's proving to be a good year for Brimstones. Mary (Smith) and others have been eagerly reporting sightings. Hopefully, there will soon be news of other species flitting around.

(09.03.25) *'I don't know if you have already had reports of sightings of **Brimstone** butterflies but there was one in the churchyard this morning - two of us saw it. I expect Jim and Ruth will have seen one days ago!'*

Well spotted, Mary! As expected, and noted, Ruth came zooming in with the first sighting, Kay Longley and I were second and third, Nicola Reeves (who entered the contest with the wonderfully succinct message – 'Just seen one') was fourth, followed

by Mary Smith and Margaret Bishop. Apparently, 13 degrees centigrade is the temperature required to awaken hibernating Brimstones. The males that is, the females preferring a little more warmth before making their appearance. Small wonder then that with the recent welcome spell of sunshine and still air we have been able to enjoy these early spring sightings. Many thanks to our keen respondents.

As always, it was good to hear from John Rosenbaum who kindly sent New Year wishes to all the birders of Tatsfield and presented his annual review. Notes on his sightings will be published in the near future. What follows is a summary of species seen and heard from his home and garden (including flyovers) throughout 2024:

Blackbird, Blackcap, Black-headed Gull, Blue Tit, Brambling, Bullfinch, Buzzard, Canada Goose, Carrion Crow, Chaffinch, Chiffchaff, Coal Tit, Collared Dove, Common Gull, Dunnock, Feral pigeon, Garden Warbler, Goldcrest, Goldfinch, Great spotted Woodpecker, Great Tit, Greenfinch, Grey Heron, Greylag Goose, Herring Gull, Jackdaw, Jay, Kestrel, Lesser black-backed Gull, Little Egret, Long-tailed Tit, Magpie, Mallard, Marsh Tit, Raven, Red Kite, Ring-necked Parakeet, Robin, Shelduck, Song Thrush, Sparrowhawk, Stock Dove, Treecreeper, Whitethroat, Willow Warbler, Wood-pigeon, Wren and Yellowhammer.

Thanks, John. I do have one fairly obvious and very important query regarding your list of observations: House Martins? Swallows? Swifts? - did you not see any last year?

(13.01.25) 'From the house I did not see any Hirundine or Swifts which was most unusual, as I normally see migrating birds fly down the valley at the back of the house. It seems the heady days when 1000's flew north and south in the spring and autumn (are over). But this seems not to be a trend with other birders. My daughter down in Devon has Swallows around her house all year with nesting House Martins on a converted barn opposite. Although going through the village and around the stables there were good numbers around our parish, the usual fly past of evening Swifts was not in evidence this year either. It could have been, with the spring time rains, that the birds were flying above the clouds and I did not see them. Or because of the increase of raptor activity in the locality they have taken a different route. However, I did see large numbers flying south when bird watching at Chevening Church.'

Do you have a question for John? If so, send it in and I'll pass it on. Or perhaps you would like to tell us about an observation of your own? I can certainly think of at least two birds that I saw during 2024 that aren't on John's list. What are they? Find out next month!

**Any news or views? Contact: nigelshaw2000@hotmail.com
Alternatively, drop a note in to 'Primrose Ridge', Greenway.**

TATSFIELD ART GROUP



The group had a long winter break so are pleased to be back in the village hall on Monday evenings. Our first workshop this year was Textured Art. You have probably come across textured art and liked the look of it, but not the price tag, our work shop showed how to create a budget-friendly design from conception to completion. What do you need? A canvas, acrylic paint, wall filler, palette knives, brushes and any other items you can make marks with. Then the fun begins creating patterns and experimenting with different tools for unique effects. We certainly had a good time experimenting.



After the Easter break we will be back on 28th April busily preparing for our Exhibition.

Paolo Francis workshops are on 12th and 19th May.

Each year the group holds its Annual Art Exhibition showing paintings in oils, pastels, acrylic, watercolour and other media. This year we have the children of Tatsfield School exhibiting their bird paintings and models. Visitors will be asked to vote for their



ART EXHIBITION

Art Sale
Original Paintings
Prints and More
by Local Artists

Sun 4th May
11am – 4.30pm

Mon 5th May
11am – 4.30pm

Tatsfield Village Hall
TN16 2AG
Free Parking

We accept cash or card payments

Refreshments available

Find us on
Facebook: Tatsfield Art Group
Instagram: tag_tatsfield_art
Website: tatsfield-art-group.weebly.com

favourite from each year group and the winners will receive a prize. TAG'S 2025 Art exhibition will be a three-day event 3-5 May. This exhibition has become a notable event in the social life of the village so don't miss it, starting with the popular private view on Saturday 3rd May, invited guests will enjoy refreshments and meet all the participating artists. Sunday 4th and Monday 5th May our doors will be thrown open to everyone from 11am until 4.30pm. Entry is free and all are welcome to buy or merely wishing to appreciate the talents on display. Homemade cakes and savouries will be available to purchase and of course tickets for our fantastic raffle prizes. The 1st prize in our Raffle will be a Fairtrade hamper also the refreshments on sale this year will be Fairtrade.

If you would like more information, please contact Sandra 07867502235 or Carol 07815775859 Our door is always open 7pm until 9.30pm at Tatsfield's Village Hall, if you fancy trying something new this year, just pop in and have a chat.

THE ARTS SOCIETY LIMPSFIELD



Anton Gaudi I Cornet (1852-1926) Master Builder of Barcelona by Viv Lawes.

Date: Wednesday 30 April 2025. Evening lecture only starts at 7.30pm Limpsfield Church Hall and refreshments will be served before the lecture. Guests: £10.

Genius Spanish architect and designer Antoni Gaudí (1852-1926), a key figure in Catalan Modernism, stands as one of the creators of Barcelona's urban identity. Inventor of new techniques and a magpie enthusiast of all things botanical and sacred, Gaudí's most famous building, the Barcelona Church of the Sagrada Família, is Spain's most-visited monument and one of seven of the architect's works listed by UNESCO as a World Heritage site. Building works on Sagrada Família began in 1882 and are still continuing. This lecture examines Gaudí's work and legacy.



The Art of Stained Glass by Nicole Menzy.

Date: Wednesday 28 May 2025. Evening lecture only starts at 7.30pm Limpsfield Church Hall and refreshments will be served before the lecture. Guests: £10.

The work of art is not just a symbol of creative genius but a historical object and the result of a laborious process of creation. This lecture looks at the development of stained glass, its purpose, the process by which it was created and some of the extraordinary survivals. From vast cathedrals to tiny chapels, we concentrate on the great achievements of the Middle Ages but consider, too, the reasons for the decline in popularity of this once-preeminent art form and some of the projects in which it has been reconsidered and revived.

ONE HUNDRED YEARS AGO



In April 1925, there were several examples of Tatsfield organisations fund-raising for charities. There was whist drive in the parish hall in aid of the National Institute for the Blind. The Tatsfield Preparatory School in Ricketts Hill Road laid on a Friday night entertainment to raise money for the Tatsfield Samaritan Fund and the Waifs and Strays Society. The Westerham Herald described it as a display of versatility by the young performers in song, dance and acting. A second performance was held on the Saturday night. A sale of 'things old and new' at the parish hall later in the month was in aid of Home and Foreign Missions and organised by the wife of the rector, the Rev. B. G. Popham.

The newly-established Women's Institute held its second Tatsfield meeting which featured a lecture and lantern slide show given by a Mr Percy Roberts about Dr Barnard's Homes and the 'Scheme of Emigration of the fittest Boys and Girls to the Colonies'. Mr Roberts had taken the first party of fifty children from across the country to Australia a few years earlier. Only one of the boys had been sent back as 'unsatisfactory' and for every boy sent out they had forty applications. There followed country dancing and tea '*generously provided by Messrs. Brook, Bond and Co*'.

Then, more news about plans to build council houses in the village. The district council announced that tenders were about to be invited for the erection of 12 houses in Tatsfield. Among other indications of how things have changed for Tatsfield over the decades: in 1925 there wasn't the garage in Paynesfield Road. This advertisement appeared in the Surrey Mirror on April 3rd.

ROYAL ENFIELD MOTOR CYCLE, in good condition; may be inspected at E. Mayes, Sunnybank Garage, Tatsfield. Phone Tatsfield 20. a3588

Ernie Mayes, at Sunnybank Garage in Old Lane appears in local directories of the day as a 'Motor Car or Lorry Driver' and sometimes as running a taxi business. He died in 1991 at the age of 91 and is buried at St Mary's churchyard. In the late 1980s, planning permission was given for the site to be used for residential purposes.

Another thing to be noted about the advertisement is that he was one of the first people in Tatsfield to have a telephone number – just two digits in those days! Then it was three digits into the 1980s, then it was five and now six.

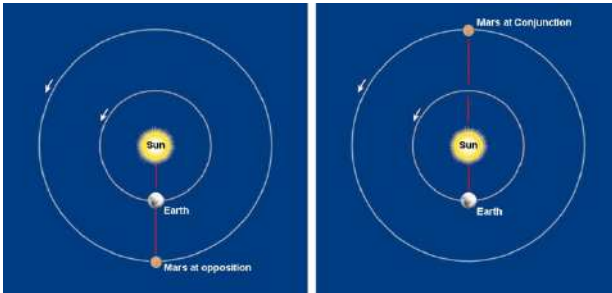
**Ian Mitchell, Tatsfield History Project - Tatsfield.history@talk21.com Tel: 577376
Website: <https://e-voice.org.uk/tatsfieldhistoryproject/>**

THE NIGHT SKY IN TATSFIELD – APRIL 2025

The balance of power is shifting once again with the planets beginning to leave the evening sky as they transfer their allegiance to the early mornings instead. Mercury, Venus and Saturn have done this already though they are still too close to the Sun to be observed. Venus, thanks to its brilliance, will be the first to appear in the east before dawn although it is likely to be mid to late May before even this happens. However, both Mars and Jupiter are still well placed in the evenings although both were at opposition a few months ago and so have now passed their best. Opposition refers to the time when a planet, whose orbit lies further from the Sun than the Earth, is at its closest to us. Planets that lie inside the Earth's orbit do not experience opposition but instead have alternative points where they are best viewed.

For the planets that lie beyond the Earth - Mars, Jupiter, Saturn, Uranus and Neptune, (we call these the superior planets) there are two important points that they reach alternately as they pass around their orbits. These are known as opposition and conjunction. In the diagrams, I've taken Mars as my example but the same holds true for all the planets I mentioned above.

In the first diagram I've shown the circumstances of opposition whereby the three bodies are in a line with Mars and the Earth are on the same side of the Sun with the Earth in the middle. At that time Mars is as close to the Earth as it can get so it will be at its brightest and largest making observation easier. The other advantage of observing Mars, or any of the superior planets, around opposition is that because it is opposite the Sun



in the sky (hence the name "opposition") it rises as the Sun sets and itself sets at sunrise meaning it is visible throughout the hours of darkness.

The second diagram shows how the bodies are positioned at the time of conjunction. As seen from Earth a conjunction is a serious nuisance because the planet is behind the Sun and unobservable. In fact, it will be unobservable for some time after the event because of course it will be lost in the glare even after it has emerged from behind the Sun.

If you want to look for Mars and Jupiter this month, then on the 1st at 10pm Mars is exactly south west at an elevation of 55° whilst Jupiter is exactly west with a height above the horizon of 30°. Alternatively, if you wait until the 15th and look at 9:15pm then both planets will be in the same directions and altitudes given for the 1st. By the last day of April, we need to look later as the twilight encroaches earlier into the evening. Try looking at 10:15pm to find Mars in the WSW, 40° in altitude and Jupiter in the in the WNW at a little over 15° high. **Brian Mills FRAS**

—THE—
LONDON ROAD
FURNITURE COMPANY



5000 sq ft of beautiful furniture and gifts over 3 floors

WWW.LONDONROADFURNITURE.CO.UK



THE LONDON ROAD FURNITURE COMPANY

LONDON ROAD, HALSTEAD,
SEVENOAKS, KENT, TN14 7AA

OPEN 6 DAYS A WEEK (CLOSED WEDNESDAYS)

Tel 01959 533433



GLEN DURHAM

Your local, personal and dedicated

ESTATE AGENT

Moving home this spring?

Maximum Exposure, Optimal Results:

Enjoy exceptional service, advanced technology, and nationwide marketing and achieve the best outcome for your property sale with me, Glen and The Agency UK.

Expert Guidance and Support:

As an experienced agent, I will provide personalised assistance throughout the selling process, ensuring a smooth and successful transaction.

Stress-Free Experience:

Let me handle the complexities of selling your property, allowing you to relax and focus on what matters most to you.

glen.durham@theagencyuk.com

07784 124 888

Property **Sold Properly**

SALES - LETTINGS - PROPERTY MANAGEMENT





Local Electrician

Part P Registered

*

Fully Insured

*

No job too small

*

Free Estimates

07847 395 437



DAVID WAITE PROPERTY MAINTENANCE

Private & Commercial

Mob: 07949 307906

Email: djw2261@aol.com

Hedges Cut. Tree Work

Log Cutting & Splitting

18-Ton Log Splitter

& man available

Grass Mowed. Turfing

Overgrown Gardens

Winter Tidy Ups

Patios, Sheds Erected

Fencing Repairs

Brickwork Repairs

Gutters Cleaned & Repaired

Internal Painting

Fully Insured



079 75 79 79 75

OAKLANDFENCING@GMAIL.COM

- ALL FENCING WORK UNDERTAKEN:
- TIMBER • CONCRETE • METAL • GATES • SHEDS •
 - REPAIRS • DOMESTIC & COMMERCIAL •
 - EMERGENCY ATTENDANCE • FULLY INSURED •
 - FREE ESTIMATES •

THINK FENCING... THINK OAKLAND

Slimming World

feel
real
good

free
recipe book
worth £4.95*

BIGGIN HILL
ST MARK'S CHURCH
CHURCH ROAD
TN16 3LB
TUESDAYS AT 5:30PM
CALL SOPHIE ON 07929 365228

BIGGIN HILL
BLUNDELLS SQUASH CLUB
JAIL LANE
(OPP CHARLES DARWIN SCHOOL)
TN16 3AU
WEDNESDAYS AT 10:00AM
CALL SOPHIE ON 07929 365228

real food, real support, real results

Slimming
WORLD[®]
touching hearts, changing lives

*When you commit to 12 weeks of group support between 22nd Dec 2024 and 29th Jan 2025. Price shown is RRP. Terms and conditions apply. Visit slimmingworld.co.uk/offers for more information.



Bringing London training and experience to your doorstep,
specialising in Residential and Commercial Property transactions.

Property Enquiries

Nichola Stokoe - NS@cameronclarkelawyers.com

020 7018 4000

Kent Office First Floor, Genesis House, 1-2 The Grange, Westerham, Kent, TN16 1AH

London Office 25 Eccleston Place, Eccleston Yards, Belgravia, London, SW1W 9NF

www.cameronclarkelawyers.com



All types of property
maintenance
and refurbishment
works undertaken.
For an estimate
please call

**Stuart on
07802 888774**



Entre Nous Lingerie

4 London Road, Westerham, TN16 1BD

Entre Nous is a **small independent lingerie shop**, owned by **Jane and Kate**, who have over **18 years of experience**.

Come visit us in Westerham and let us help you find the perfect fit!

NEW beachwear, cover ups, linen trousers and shirts



10 – 4 Tuesday to Saturday
www.entrenouslingerie.co.uk
01959 563975

NEED ACCOUNTING SERVICES?



DevonshireGreen
Accounting | Taxation | Wealth Management

Who we are

Devonshire Green is a team of qualified accountants with over 90 years combined experience. With offices in **Westerham & Tatsfield Village**, serving clients in the immediate surrounding areas and nationwide. Our team includes tax accountants, financial advisers and wealth management experts.

What we do

- Personal tax returns - self-assessment
- Limited company accounts
- Sole trader accounts
- Management accounts
- CIS for contractors & subcontractors
- Payroll
- Tax planning
- VAT returns
- Bookkeeping
- Wealth management

Tel: 020 8464 0493

Email: admin@devonshiregreen.uk

1-2 The Grange High Street, Westerham,
Kent TN16 1AH

 DevonshireGreen
Accounting | Taxation | Wealth Management

www.devonshiregreen.uk



R. THORPE

— HEATING & PLUMBING LTD —

DOMESTIC & COMMERCIAL HEATING ENGINEERS & PLUMBERS

Boiler Breakdowns, Repairs and Servicing
(all Makes & Models)

Boiler Installations and Replacements
(Interest free finance available)

Pay Monthly Service and Repair Packages

Domestic and Commercial Central Heating Specialists

Underfloor Heating Installations and Servicing

**Call Rob on 07597 048884 rob@rthorpeheating.co.uk
www.rthorpeheating.co.uk**



Keeping IT Simple

*Solving all your technical support worries, calmly and patiently
in your own home, by someone who cares*

- > New Device Setup
- > Instruction & Tuition
- > Cleaning & Cooling
- > Virus & Malware Removal
- > Hardware Upgrades
- > Remote Support
- > Small Business Support
- > WiFi Routers & Networking
- > Cloud Storage
- > Data Backup
- > Data Recovery
- > E-mail Support
- > PCs & Laptops
- > Printers
- > Smartphones
- > Tablets
- > Televisions
- > Wireless Security Cameras



07375 416 176

dan@kisit.co.uk





Advertise your Business or Service Here



Looking to reach a local audience? Advertise in our Parish Magazine! Our magazine is distributed to hundreds of households in Tatsfield providing an excellent opportunity to promote your business, event or service.

What are the benefits of advertising in the Parish Magazine?

Targeted Audience	Reach a dedicated and engaged local readership.
Affordable Rates	Competitive pricing to fit your budget
Community Support	Show your support for the local community and gain loyal customers.

Contact Us Today! Email Sarah: tatsfieldmag@gmail.com



NEW LIFE CHURCH
BIGGIN HILL

A CHURCH FOR THE WHOLE COMMUNITY

A local church with an international vision

EVERY SUNDAY 10am

Join us for worship
and Bible teaching
with youth and kids
meetings

DURING THE WEEK

- **Connect** Every Monday from 2-4pm
- **Stay & Play** Term time Fridays 10:30am-12pm
- **Youth** Term time Fridays 7:30-9pm
- **Dance fit** Friday 5-6pm
- **Board games cafe** First Saturday of the month 3-7pm
- **Together peace of mind** every second Saturday of the month 10:30am - 12 noon

SCAN ME



FIND OUT MORE

Try Church



www.newlifebh.org.uk
01959 571 667



www.facebook.com/newlifebh

[newlifebigginhill](https://www.instagram.com/newlifebigginhill) [@newlifechurchbigginhill352](https://www.youtube.com/channel/UC...)



DAVID RUDD & SON PLUMBING AND HEATING LTD

- Full central heating systems and boiler exchanges carried out for GAS, LPG and Oil (Kerosene)
- Installers of Worcester, Valliant and Glow Worm boilers with up to **12-year** guarantee
- Kamco Power Flushing
- All types of Plumbing, Heating and Drainage
- Landlord / Homeowners Gas Certificates
- Installation and maintenance of Ground Source Pumps, Solar,
- Under Floor Heating, Cookers and Gas Fires
- Boiler breakdown – Diagnostics and Repairs
- Installation and servicing of Unvented Hot Water Systems
- Full bathroom design and installations

Fast, Friendly, Reliable Service

WRAS Approved Institute of Plumbing
ACIPHE RP



Tel: **01959 577072**

Mob: **07831 641664**

07957 940905

davidruddandson@hotmail.com



EST. 1881

•W•UDEN & SONS•

FAMILY FUNERAL
DIRECTORS

BIGGIN HILL

186 Main Road, TN16 3BB

01959 573130

24 HOUR SERVICE, 7 DAYS A WEEK

Please compare our **Prices**, our **Service** and our
Vehicles

Private Chapels of Rest

Prepaid Funerals

CONTINUING TO BUILD ON THE FAMILY TRADITIONS OF PERSONAL
AND CARING SERVICE LOCALLY FOR OVER
140 YEARS

Branches also at Petts Wood, Sidcup, Eltham,
Bexleyheath, Dulwich and Camberwell



Mobile Hairdresser & Gel Nail Manicures

Based in Tatsfield
30 Years Experience

Kate

tel: 01959 573816

mobile: 07970 012194

Fully Insured

GEL LUX
PROFES



LOCAL PAINTER & DECORATOR
FRIENDLY AND PROFESSIONAL
20 YEARS EXPERIENCE
FREE NO OBLIGATION QUOTES

CALL: 07834 468 835
INSTAGRAM: HLHPAINTING



**ADVERTISE
HERE!**

REACH OVER 800 TATSFIELD
HOUSEHOLDS
Tatsfieldmag@gmail.com
07468 589379

Mobile Chiropodist

Chiropody undertaken in the
comfort of your own home



Mandy Gifford

M.Inst.Ch.P., H.P.C. registered

Registered Member of the
Institute of Chiropody
and Podiatry

Tel: 01959 540715
Mob: 07944 763045

ALEX JONES FUNERAL DIRECTORS

Serving the community since 1996

- OFFERING A CARING AND PERSONAL SERVICE
- BEAUTIFUL CHAPELS OF REST
- HOME VISITS AVAILABLE
- MEMORIAL MASONRY
- PRE-PAID FUNERAL PLANS FROM GOLDEN CHARTER
- AN INDEPENDENT FAMILY OWNED BUSINESS



LINGFIELD
1 East Grinstead Road
Surrey
RH7 6EP
Tel: 01342 832 534

OXTED
92 Station Road East
Surrey
RH8 0QA
Tel: 01883 730 383

FOREST ROW
1 Ashdown Court
Lewes Road, East Sussex
RH18 5EZ
Tel: 01342 822 399

EDENBRIDGE
70 High Street
Kent
TN8 5AS
Tel: 01732 860 047

GOLDEN CHARTER
FUNERAL PLANS

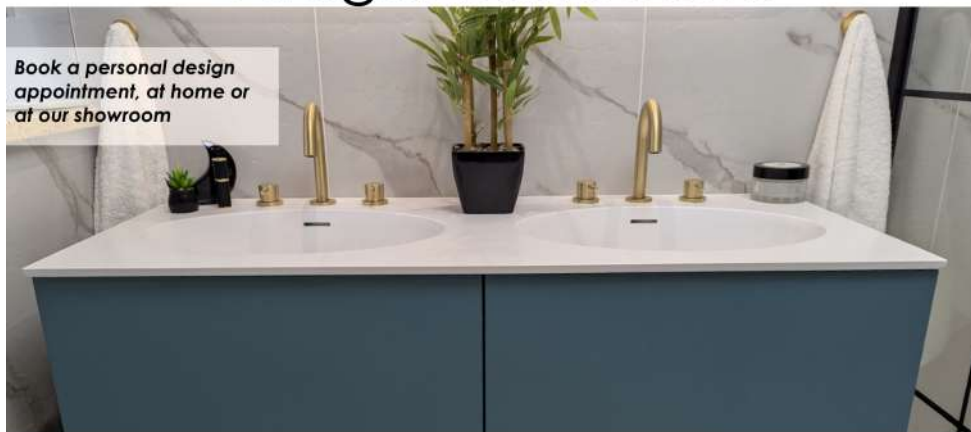


Alex Jones Funeral Directors Limited is an appointed representative of Golden Charter Limited trading as Golden Charter Funeral Plans which is authorised and regulated by the Financial Conduct Authority (FRN:965279).

GC-LEFT 2806 - 1023

Badger Bathrooms

*Book a personal design
appointment, at home or
at our showroom*



Your local, family owned, independent bathroom specialist for over 41 years!

SHOWROOM: Betsom's Farm, Pilgrims Way, Westerham TN16 2DS

www.badgerbathrooms.com 01732 464450



Good Movers

Removals & Clearances

- Removals
- Boxes & Packing
- Storage
- Clearances
- Courier Delivery
- Cleaning
- Probate Service Arranged
- Light Demolition
- Cash Paid for Unwanted Goods

The best way, the only way, the Good way!

0800 024 6183 / 07522 795594
www.goodmovers.co.uk / info@goodmovers.co.uk

PARADISE WITH TARA

GENTLE YET EFFECTIVE

EXERCISE TO FABULOUS MUSIC

45 MINS - NO FLOOR WORK

★ **TUESDAYS**
 4pm
TATSFIELD VILLAGE HALL★

- ★ Improves **BALANCE, POSTURE & MOBILITY**
- ★ Improves coordination ★ **Feel good class**
- ★ **Recommended by Physios**

Contact Tara

☎ **07717 797 027**
info@upliftstudio.co.uk



MUSSELWHITE

BUILDING, PLUMBING & HEATING



Est. 1979 | Family Run | Professional | Reliable | Honest Workmanship

Call or WhatsApp:

07887 517361

musselwhite.builders@gmail.com

- Plumbing & Heating
- Extensions
- Landscaping & Fencing
- Bathroom & Kitchen Installations
- Roofing
- Refurbishments
- Disability Access
- Glazing
- Carpentry
- Pipework
- Underfloor heating
- Maintenance and Repairs
- Brickwork
- Rendering & Plastering
- Electrical Works





GREENWOOD HORTICULTURE

- Grounds maintenance
- Pressure washing
- Grass cutting
- Garden clearance
- Hedge trimming
- Stump removal
- Tree pruning and removal
- Weed control

Contact
 07944224812
 Greenwoodhorticulture@gmail.com

Checkatrade.com
where reputation matters

THE WASP GUYS

Wasp Nest Removal

07761 232470

Local
Friendly
Trustworthy
Service



Fully Insured
100%
Guaranteed
7 days a week

See our Checktrade customer reviews at
<https://www.checktrade.com/trades/thewaspguys>
www.waspnestsdestroyed.com

Discover the joy of dance



Twirl your tutu

All dance styles. All ages.

07850 746189/ 07584 064643
www.judithessexschoolofdancing.co.uk



JUDITH
ESSEX
SCHOOL OF
DANCING

IDTA

ROYAL ACADEMY OF
DANCE
REGISTERED TEACHER



Care Before Profit

David Gresham House Care Home



*Oxted's local award-winning care charity,
improving the lives of older people*

- **Your care, your way**
- **Friendly and vibrant home from home**
- **Respite stays available**



*Celebrating 40 years of care in the
local community*

We're here to help 7 days a week

Scan our QR code, to see more of our beautiful home or call us on **01252 979111** for a chat about your care needs



www.awvs.org.uk

email: marketing@awvs.org.uk

Tatsfield
Aquatics

Proud members of
Checkatrade.com
Where reputation matters

Pond Maintenance And Landscaping

- Pond Maintenance
- Pond Design & Construction
- Pond Renovation
- Lake Management
- Garden Makeovers
- Fencing, Paving, Turfing

01959 571 828

ian@tatsfieldaquaticsandlandscaping.co.uk



MINI CABS

AIRPORT CARS BIGGIN HILL

YOUR LOCAL

LICENSED MINI CABS

01959 540550

Ibbett Mosely

A name you can trust.

Independent Estate Agents - Selling Homes since 1900



PROFESSIONAL SERVICES

Residential Estate Agency • Residential Lettings
Property Management • Commercial Agency
Valuations • Building Design and Layout
Building Surveying • Town Planning and Development
Auctions - Furniture, Effects, Antiques and Fine Art

28 Market Square, Westerham, Kent, TN16 1FR
01959 563265
westerham@ibbettmosely.co.uk
www.ibbettmosely.co.uk

Offices at

Westerham • Sevenoaks • Otford • Tonbridge • Borough Green • West Malling • London

Sunningvale Service Station

Sunningvale Avenue, Biggin Hill TN16 3TL

01959 573434

We offer a warm welcome and friendly service
whatever your motoring needs



Petrol/Diesel

MOT

Catalysts

Bodywork Repairs

Diesels

Spraying

Exhausts

Insurance Estimates

**LING & Sons Ltd**
BUILDING CONTRACTORS

BUILDING FOR OVER 50 YEARS

New Builds | Renovations | Extensions

**CONTACT Information**

☎ 01959 577586

✉ info@lingandsons.co.uk

NVQ
HBC



www.lingandsons.co.uk

MR Computing

38 years of combined experience in IT

Local, Professional and Family Owned
business since 2005

NO FIX NO FEE & NO CALL OUT CHARGE

- Punctual visits at an agreed time or collection & drop off service.
- Apple & Windows computer & tablet/phone support for Business & Home.
- Reliable wireless range improvement for Home & Business.
- Most work carried out in a one hour visit. Fixed price workshop repairs.
- Repairs, speedup and maintenance, Data transfer/recovery, Computer malware/virus removal.
- New computers supplied/set up and made to feel familiar.



&



Windows

**Call Mark
& Sue on:**

01883 730345

OR

0800 6129534

Email:

office@mrcomputing.net



Website - www.mrcomputing.net
Reviews - mrcomputing.net/reviews